

Paul Mason Associates



Hatfield Grove, Off Bury Lane, Hatfield Peverel, Essex, CM3 2GL
Guide price £644,995

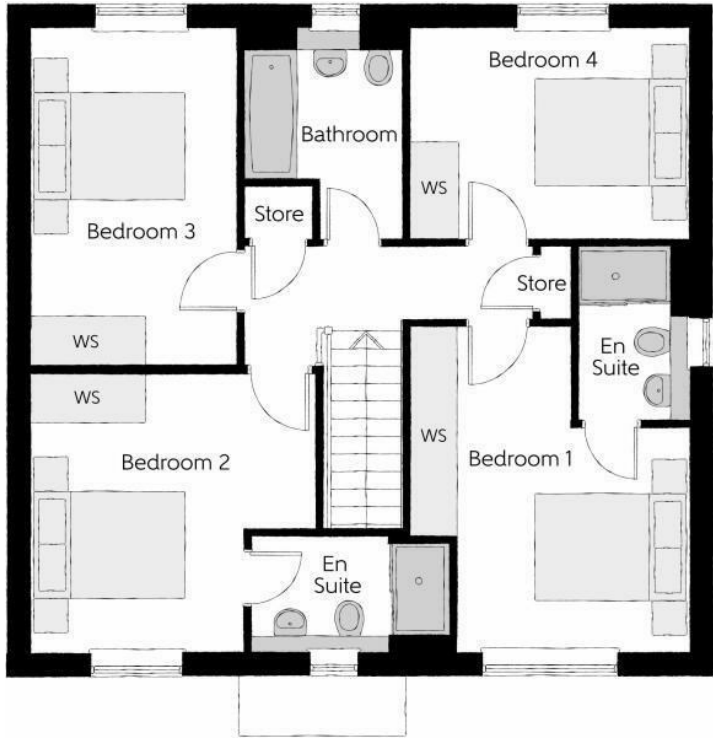
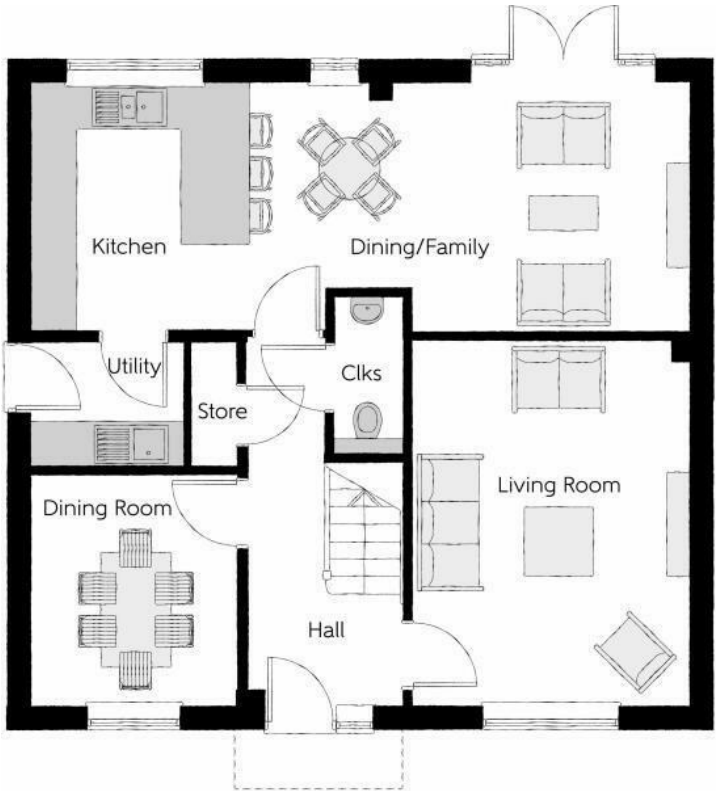
- Exclusive Development in Hatfield Peverel Close to the Train Station
- Ready to Move In!
- Incentives Available including £20,000 towards Stamp Duty Costs
- Four Bedrooms
- Two En-Suites, Family Bathroom and Downstairs Cloakroom
- Open Plan Kitchen/Diner/Family Area
- Separate Utility Room
- Garage and Off-Street Parking Available
- 10-Year NHBC Warranty
- EPC - TBC

Ready to move in.....Situating within the exclusive Hatfield Grove development in the desirable village of Hatfield Peverel, this beautifully presented 4-bedroom detached home offers modern family living in a prime location. Built by the renowned Bellway Homes, the property is just a short walk from the mainline train station with direct links to London Liverpool Street—ideal for commuters.

The ground floor welcomes you with a bright entrance hallway, a dedicated study, and a spacious living room. The heart of the home is the impressive open-plan kitchen/diner/family area, perfect for entertaining and everyday living, with French doors opening onto the garden. A separate utility room with outdoor access adds practicality.

Upstairs, you'll find four generously sized bedrooms, including two with stylish en-suites in the master and second bedroom, along with a sleek family bathroom. Outside, the property benefits from a private garden with side access, off-street parking, and a garage.

This is a fantastic opportunity to own a contemporary home in a peaceful yet well-connected setting.



Energy Efficiency Rating		
	Current	Potential
Very energy efficient - lower running costs		
(92 plus) A		
(81-91) B		
(69-80) C		
(55-68) D		
(39-54) E		
(21-38) F		
(1-20) G		
Not energy efficient - higher running costs		
England & Wales	EU Directive 2002/91/EC	EU Directive 2002/91/EC

Environmental Impact (CO ₂) Rating		
	Current	Potential
Very environmentally friendly - lower CO ₂ emissions		
(92 plus) A		
(81-91) B		
(69-80) C		
(55-68) D		
(39-54) E		
(21-38) F		
(1-20) G		
Not environmentally friendly - higher CO ₂ emissions		
England & Wales	EU Directive 2002/91/EC	EU Directive 2002/91/EC

Hatfield Grove

Hatfield Grove is a collection of beautifully designed brand-new homes, built by the highly reputable Bellway Homes Limited.

Located in the delightful village of Hatfield Peverel, steeped in history and surrounded by natural beauty, offering a tranquil retreat from the hustle and bustle of modern life.

Hatfield Peverel railway station is ideally positioned just a few minutes walk away, offering regular services on the Greater Anglia line, with direct links to London Liverpool Street, making the village a popular choice for commuters to the capital, along with trains to Chelmsford and Colchester. The village is also conveniently located near major road networks, including the A12, a primary route connecting London and East Anglia.

There is a variety of dining and shopping options to satisfy every palate and preference. The village is home to a selection of charming

pubs, cafes, and restaurants, including the highly regarded Blue Strawberry Bistro.

St. Andrew's Junior School is centrally positioned within the village. Secondary schooling can be found nearby in the Towns of Witham and Maldon. There is also further secondary and grammar schooling in the cities of Chelmsford and Colchester. Whilst in the private sector there is New Hall and Felsted.

For nature lovers, there are an abundance of scenic walking trails and open spaces to explore. The village is historically significant due to the presence of the 11th century St. Andrew's Church, which stands on the site of a former Benedictine priory.

Whether you're drawn in by the sense of community, the stunning countryside, or the excellent schools, one thing's for sure, the village has got a whole lot to offer.

ACCOMMOATION

GROUND FLOOR

Entrance Hall

Kitchen

3.22m x 2.82m (10'6" x 9'3")

Dining/Family Room

5.74m x 3.22m (18'9" x 10'6")

Living Room

4.74m x 3.59m (15'6" x 11'9")

Utility Room

1.98m x 1.63m (6'5" x 5'4")

Cloakroom

2.06m x 0.90m max (6'9" x 2'11" max)

FIRST FLOOR

Landing

Bedroom One

4.26m max x 3.65m max (13'11" max x 11'11" max)

En-Suite

2.28m x 1.44m (7'5" x 4'8")

Bedroom Two

3.69m max x 3.65m (12'1" max x 11'11")

En-Suite

2.60m x 1.53m max (8'6" x 5'0" max)

Bedroom Three

4.38m x 2.66m (14'4" x 8'8")

Bedroom Four

3.65m x 2.71m (11'11" x 8'10")

Bathroom

2.71m x 2.08m (8'10" x 6'9")

EXTERIOR

Frontage

Rear Garden

Single Garage

Property Services

Gas - Mains

Electric - Mains

Water - Mains

Drainage - Mains

Heating - Gas Central Heating

Local Authority - Braintree District

Council

Viewings

Strictly by appointment only through the selling agent Paul Mason Associates 01245 382555.

Important Notices

We wish to inform all prospective purchasers that we have prepared these particulars including text, photographs and measurements as a general guide. Room sizes should not be relied upon for carpets and furnishings. We have not carried out a survey or tested the services,

appliances and specific fittings.

These particulars do not form part of a contract and must not be relied upon as statement or representation of fact.

Should you be successful in having an offer accepted on a property through ourselves, then there is an administration charge of £25 inc. VAT per person (non-refundable) to complete our Anti Money Laundering Identity checks.



Paul Mason Associates

35 The Street
Latchingdon
Chelmsford
Essex
CM3 6JP

T: 01621 742 310

Bruce House
17 The Street
Hatfield Peverel
Chelmsford
CM3 2DP

T: 01245 382 555

Sales | Lettings | Development | Investment

F: 01245 381257 E: info@paulmasonassociates.co.uk www.paulmasonassociates.co.uk

Paul Mason Associates Limited Registered in England Number - 6767946
Registered Office - Bruce House, The Street, Hatfield Peverel CM3 2DP





Paul Mason Associates

35 The Street
Latchingdon
Chelmsford
Essex
CM3 6JP

T: 01621 742 310

Bruce House
17 The Street
Hatfield Peverel
Chelmsford
CM3 2DP

T: 01245 382 555

Sales | Lettings | Development | Investment

F: 01245 381257 E: info@paulmasonassociates.co.uk www.paulmasonassociates.co.uk

Paul Mason Associates Limited Registered in England Number - 6767946
Registered Office - Bruce House, The Street, Hatfield Peverel CM3 2DP





Paul Mason Associates

35 The Street
Latchingdon
Chelmsford
Essex
CM3 6JP
T: 01621 742 310

Bruce House
17 The Street
Hatfield Peverel
Chelmsford
CM3 2DP
T: 01245 382 555

Sales | Lettings | Development | Investment

F: 01245 381257 E: info@paulmasonassociates.co.uk www.paulmasonassociates.co.uk

Paul Mason Associates Limited Registered in England Number - 6767946
Registered Office - Bruce House, The Street, Hatfield Peverel CM3 2DP





Paul Mason Associates

35 The Street
Latchingdon
Chelmsford
Essex
CM3 6JP
T: 01621 742 310

Bruce House
17 The Street
Hatfield Peverel
Chelmsford
CM3 2DP
T: 01245 382 555

Sales | Lettings | Development | Investment

F: 01245 381257 E: info@paulmasonassociates.co.uk www.paulmasonassociates.co.uk

Paul Mason Associates Limited Registered in England Number - 6767946
Registered Office - Bruce House, The Street, Hatfield Peverel CM3 2DP

