

Paul Mason Associates



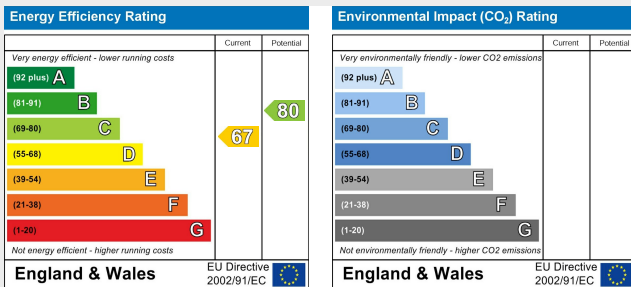
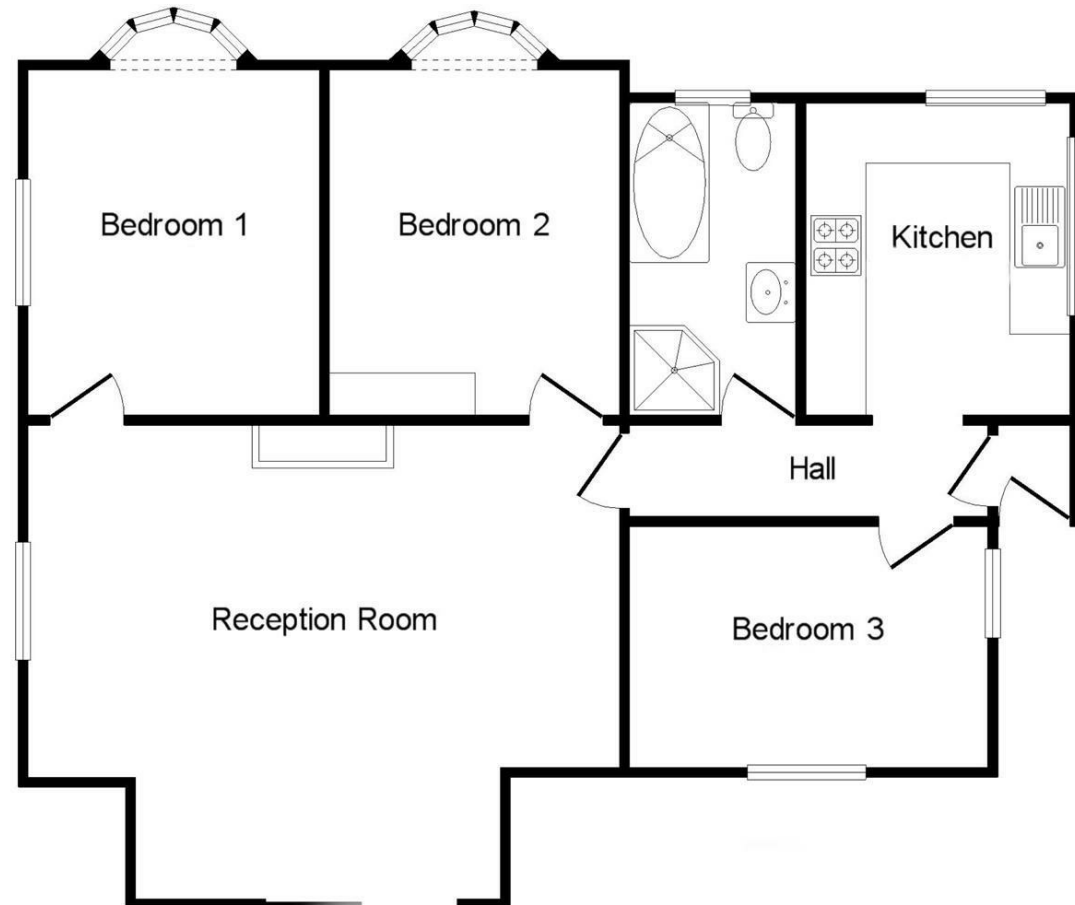
Riverton Drive, St. Lawrence, Essex, CM0 7NG

Offers in excess of £300,000

- Large Corner Plot
- Detached Property
- Three Double Bedrooms
- Reception Room
- Bathroom
- Re-Fitted Kitchen
- Close To Pleasant Riverside Walks
- Garage
- Potential For Development Subject To Planning
- EPC - D

No Onward Chain..... This detached three bedroom bungalow is situated on a large corner plot. The property is located in the waterside village of St Lawrence and is conveniently within walking distance of the popular St Lawrence Bay Sailing Club, the two public houses within the village, water sports club, shop and post office.

The accommodation comprises lounge, refitted kitchen, bathroom and three double bedrooms. Externally there is ample parking plus a detached garage to the side. The gardens are mainly laid to lawn with established borders and a raised garden pond. The property has lots of potential subject to planning permission.



### Distances

Ormiston Rivers Academy - 7.9 miles  
Southminster Railway Station - 6.0 miles  
Burnham-on-Crouch - 8.5 miles  
Maldon Town Centre - 13.1 miles  
Southend (London) Airport - 26.4 miles

All mileages are approximate.

### Accommodation

#### Entrance Lobby

Stable entrance door.

#### Inner Hallway

Coved ceiling.

#### Reception Room

5.78m x 4.54m (18'11" x 14'10")  
Walk-in bay window to side and window to front. Brick fireplace.  
Wall mounted air conditioning unit.

#### Kitchen

3.11m x 2.65m (10'2" x 8'8")  
Windows to rear and side.  
Refitted units to the eye and base level finished with laminate roll top work surfaces and tiled surround. Inset stainless steel sink with mixer taps and drainer.  
Four ring hob and built in oven.  
Space for washing machine and fridge/freezer.

### Bedroom

3.38m x 2.91m (11'1" x 9'6")  
Window to front and bowed window to side.

### Bedroom

3.38m x 2.91m (11'1" x 9'6")  
Bowed window to side.

### Bedroom

3.54m x 2.42m (11'7" x 7'11")  
Windows to side and rear.

### Bathroom

Obscure window to side. Tiled walls and flooring. Suite comprising shower cubicle, bath, wash hand basin with storage below and low level WC. Heated towel rail.

### Exterior

#### Gardens

Paved footpath leading to both sides and front of property with the remainder mainly laid to lawn. Raised garden pond. Various flowers, shrubs and trees. Timber shed. Ample parking to side and front. Outside lighting.

### Garage

Double hinged doors to front.

### Services

Gas-N/A  
Electric- Mains

### Water- Mains

Drainage- Mains

Heating- TBC

Local Authority - Maldon District Council- D

### Viewings.

Strictly by appointment only through the selling agent Paul Mason Associates on 01621 742310.

### Important Notices.

We wish to inform all prospective purchasers that we have prepared these particulars including text, photographs and measurements as a general guide. Room sizes should not be relied upon for carpets and furnishings. We have not carried out a survey or tested the services, appliances and specific fittings. These particulars do not form part of a contract and must not be relied upon as statement or representation of fact.



Paul Mason Associates

35 The Street  
Latchingdon  
Chelmsford  
Essex  
CM3 6JP  
T: 01621 742 310

Bruce House  
17 The Street  
Hatfield Peverel  
Chelmsford  
CM3 2DP  
T: 01245 382 555

Sales | Lettings | Development | Investment

F: 01245 381257 E: [info@paulmasonassociates.co.uk](mailto:info@paulmasonassociates.co.uk) [www.paulmasonassociates.co.uk](http://www.paulmasonassociates.co.uk)

Paul Mason Associates Limited Registered in England Number - 6767946  
Registered Office - Bruce House, The Street, Hatfield Peverel CM3 2DP





Paul Mason Associates

35 The Street  
Latchingdon  
Chelmsford  
Essex  
CM3 6JP  
T: 01621 742 310

Bruce House  
17 The Street  
Hatfield Peverel  
Chelmsford  
CM3 2DP  
T: 01245 382 555

Sales | Lettings | Development | Investment

F: 01245 381257 E: info@paulmasonassociates.co.uk www.paulmasonassociates.co.uk

Paul Mason Associates Limited Registered in England Number - 6767946  
Registered Office - Bruce House, The Street, Hatfield Peverel CM3 2DP

