

Paul Mason Associates

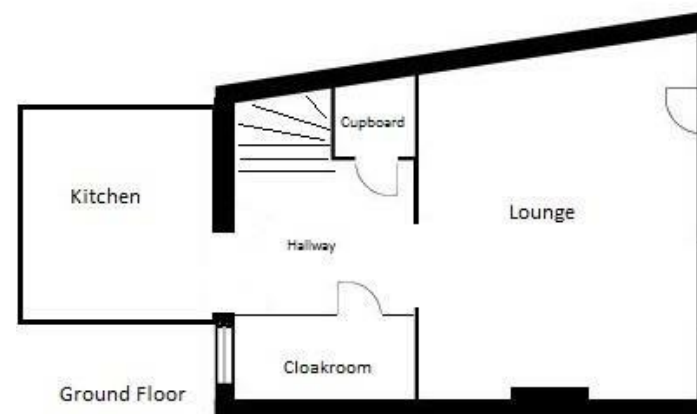
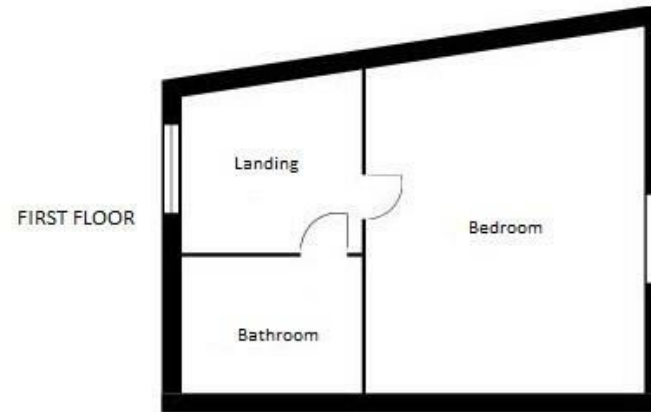


High Street, Bradwell-On-Sea, Essex, CM0 7QL

Guide price £200,000

- Character Property
- Extended One Bedroom House
- Re-fitted Kitchen
- Ground Floor Cloakroom
- Lounge/Dining Room
- Re-fitted Bathroom
- Close to Local Amenities
- Well Maintained Rear Garden
- EPC- E

This charming well-presented extended one bedroom mid terraced house is in the popular semi-rural village of Bradwell-on-Sea on the Dengie Peninsula. The property is central to the Marina, nature walks, iconic landmarks including the Chapel of St Peter and local amenities. Internally the accommodation includes a re-fitted kitchen, lounge/dining room and a cloakroom on the ground floor. To the first floor there is a master bedroom with a re-fitted bathroom. Externally the property is set back from the road with a well maintained rear garden. To appreciate fully the size and presentation of this property an internal viewing is recommended.



Floorplan for illustration purposes only - Not to Scale

Energy Efficiency Rating		Environmental Impact (CO <sub>2</sub> ) Rating	
	Current	Potential	
Very energy efficient - lower running costs			Very environmentally friendly - lower CO <sub>2</sub> emissions
(92 plus) A			(92 plus) A
(81-91) B			(81-91) B
(69-80) C			(69-80) C
(55-68) D			(55-68) D
(39-54) E		43	(39-54) E
(21-38) F			(21-38) F
(1-20) G			(1-20) G
Not energy efficient - higher running costs			Not environmentally friendly - higher CO <sub>2</sub> emissions
England & Wales		England & Wales	
EU Directive 2002/91/EC		EU Directive 2002/91/EC	

### Distances:

St Cedd's Primary School - 0.3 miles

Bradwell Marina - 1.6 miles

Southminster Railway Station - 7.7 miles

Burnham-on-Crouch - 11.3 miles

Southend (London) Airport - 28.6 miles

(All distances are approximate).

## ACCOMMODATION

### GROUND FLOOR

A panelled wooden door opens to:

#### Lounge

3.7m x 3.5m (12'1" x 11'5")  
Window with fitted shutters and door to front. Feature brick fireplace with inset multi-fuel burning stove. Radiator. TV and Telephone points. Open to Hallway.

#### Hallway

Stairs to first floor. Under-stairs cupboard with space for fridge/freezer. Radiator. Open to..

#### Cloakroom

Obscure window to rear. White suite comprises low level wc and inset wash hand basin with tiled

splashbacks and vanity unit below. Extractor Fan. Tile effect flooring.

#### Kitchen

2.2m x 2.2m (7'2" x 7'2")  
Window to rear and door to garden. Modern wooden shaker style units to eye and base level with wood effect work surfaces over, inset sink unit with mixer tap and drainer. Tiled splashbacks. Electric oven and 4 ring electric hob with extractor hood over. Space for washing machine. Vaulted ceiling. Wood effect flooring.

### FIRST FLOOR

#### Landing

Window to rear. Stairs to ground floor. Storage cupboard. Doors to:

#### Master Bedroom

3.7m x 3.2m (12'1" x 10'5")  
Window to front with fitted shutters. Built-in wardrobes and storage cupboard housing hot water cylinder. Radiator. Telephone point.

#### Shower Room

Three piece white suite comprising large fully tiled shower cubicle with rainfall shower and hand shower

attachments, vanity unit enclosing low level w.c. with concealed cistern and inset wash hand basin with storage below. Radiator. Extractor fan. Access to loft via hatch. Inset ceiling spotlights. Wood effect flooring.

### EXTERIOR

#### Rear Garden

A cottage courtyard garden bordered with brick wall to one side with remainder being painted boarded fencing with a side access gate. Laid with artificial turf and a small shingle pathway. Brick Shed with lighting and power, bin store area.

#### Services:

Gas- N/A

Electric- Mains

Water- Mains

Drainage- Mains

Heating- Electric Central

Heating

Local Authority - Maldon District

Council - Tax Band -A

#### Viewings.

Strictly by appointment only through the selling agent Paul Mason Associates on 01621 742310.

#### Important Notices.

We wish to inform all prospective purchasers that we have prepared these particulars including text, photographs and measurements as a general guide. Room sizes should not be relied upon for carpets and furnishings. We have not carried out a survey or tested the services, appliances and specific fittings. These particulars do not form part of a contract and must not be relied upon as statement or representation of fact.



Paul Mason Associates

35 The Street  
Latchingdon  
Chelmsford  
Essex  
CM3 6JP  
T: 01621 742 310

Bruce House  
17 The Street  
Hatfield Peverel  
Chelmsford  
CM3 2DP  
T: 01245 382 555

Sales | Lettings | Development | Investment

F: 01245 381257 E: [info@paulmasonassociates.co.uk](mailto:info@paulmasonassociates.co.uk) [www.paulmasonassociates.co.uk](http://www.paulmasonassociates.co.uk)

Paul Mason Associates Limited Registered in England Number - 6767946  
Registered Office - Bruce House, The Street, Hatfield Peverel CM3 2DP





Paul Mason Associates

35 The Street  
Latchingdon  
Chelmsford  
Essex  
CM3 6JP  
T: 01621 742 310

Bruce House  
17 The Street  
Hatfield Peverel  
Chelmsford  
CM3 2DP  
T: 01245 382 555

Sales | Lettings | Development | Investment

F: 01245 381257 E: [info@paulmasonassociates.co.uk](mailto:info@paulmasonassociates.co.uk) [www.paulmasonassociates.co.uk](http://www.paulmasonassociates.co.uk)

Paul Mason Associates Limited Registered in England Number - 6767946  
Registered Office - Bruce House, The Street, Hatfield Peverel CM3 2DP

