



Balham Hill, SW12

£3,000 Per calendar month

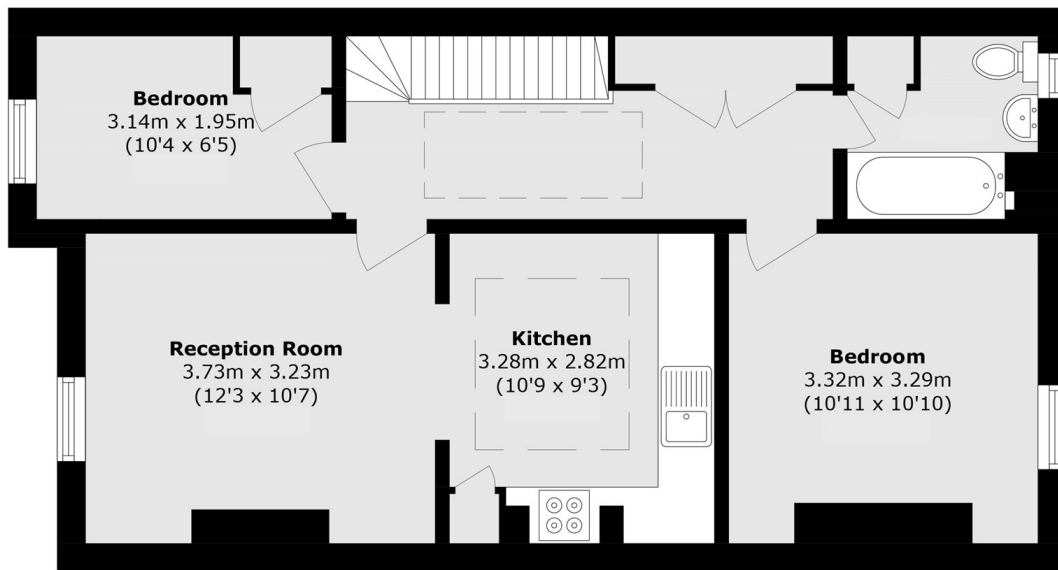
An attractive three bedroom new build apartment in the heart of Clapham South. Finished to a high specification throughout with wooden flooring, built-in storage, two bathrooms within a gated development.

Located on Balham Hill, offering access to the many convenience stores and supermarkets of Clapham South, as well as the shops and boutiques of Abbeville Road.

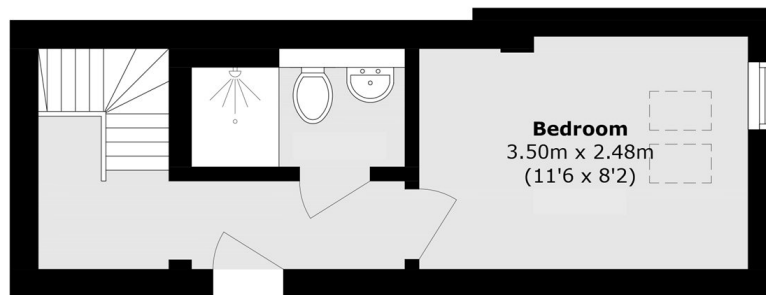
Features

- Three Double Bedrooms
- Open Plan Reception
- Modern Kitchen
- Wooden Flooring
- New Build Apartment
- Furnished

Balham Hill, London, SW12



First Floor



Ground Floor

Total area (approx.): 73.8 sq. m (794.3 sq. ft)