



Adelina Mews, SW12

£1,850 Per calendar month

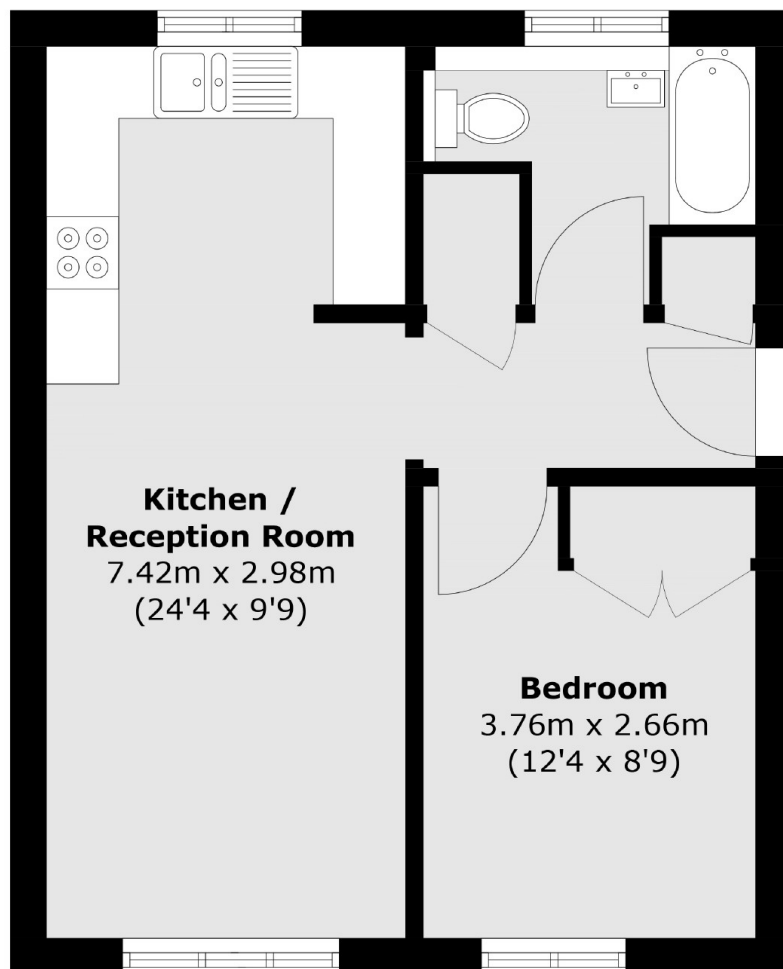
Set on the ground floor, this one bedroom flat is ideal for a professional couple and comes with an open plan reception room, a modern kitchen, communal garden and allocated parking.

Adelina Mews is ideally located equidistance from both Clapham South and Balham, with access to an array of supermarkets, pubs, bars and restaurants.

Features

- Ground Floor Flat
- One Double Bedroom
- Modern Kitchen
- Open Plan Reception
- Communal Garden
- Allocated Parking

Adelina Mews, London, SW12



Total area (approx.): 43.7 sq. m (470.4 sq. ft)