



Nightingale Lane, SW12

£3,300 Per calendar month

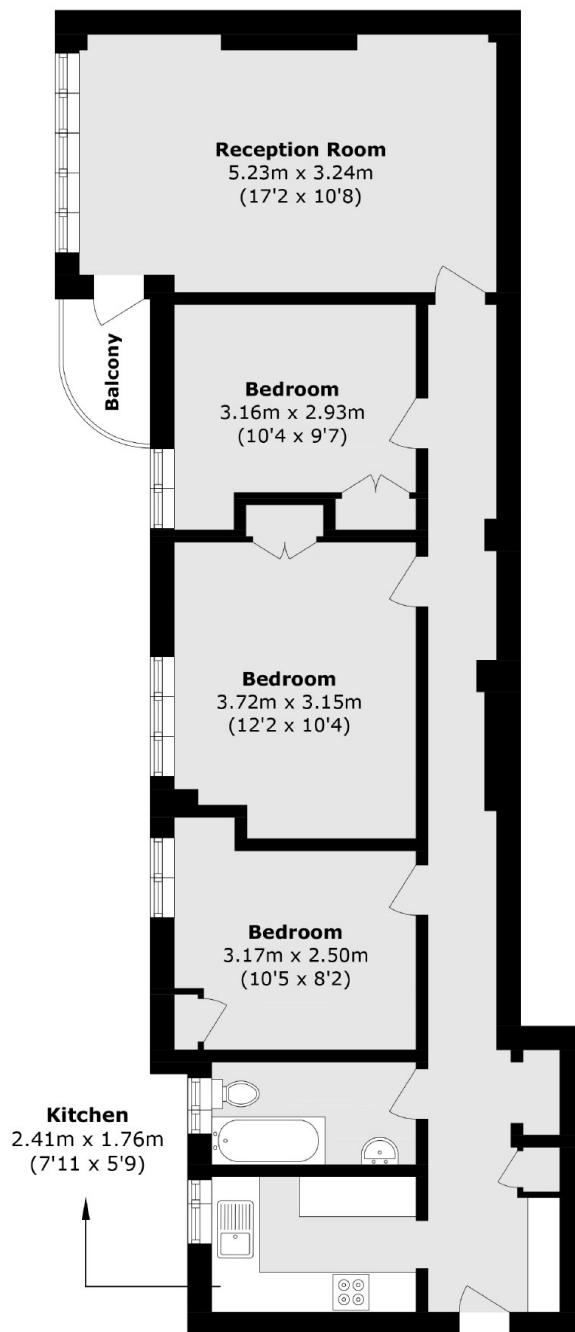
A modern three double bedroom flat in a popular mansion block. The property comes with a spacious reception room, separate kitchen, a private balcony and bathroom with shower over the bath.

Thurleigh Court is located on Nightingale Lane which has fantastic access to Clapham South tube station, the many amenities nearby and Clapham Common itself.

Features

- Three Double Bedrooms
- Spacious Reception Room
- Separate Kitchen
- Private Balcony
- Nightingale Lane
- Close To Transport

Nightingale Lane, London, SW12



Total area (approx.): 69.4 sq. m (747 sq. ft)
Balcony area (approx.): 1.7 sq. m (18.2 sq. ft)