



Shandon Road, SW4

£8,000 Per calendar month

Dexters



Shandon Road, SW4

Situated in the highly desirable Abbeville Village, this extraordinary five bedroom home has been meticulously decorated throughout.

Arranged over four floors, this property is ideal for a growing family.

With the ground floor providing a double reception room with a large bay window, plantation shutters and high ceilings. To the rear of the property there is a WC and a modern eat-in kitchen/dining space with bi-folding doors out to a private landscaped garden.

First and second floors come with a larger principal bedroom which has both a walk-in wardrobe and en suite bathroom, two further double bedrooms, a bathroom and utility space.

Whilst the top floor includes two double bedrooms, a Juliet balcony and a home office. The property also comes with storage space within the eaves and basement.

Shandon Road is located in the heart of Abbeville Village, which boasts a selection of charming cafés, restaurants, shops and a walk to the open spaces of the Clapham Common.

Features

- Five Double Bedrooms
- Double Reception Room
- Eat-In Kitchen
- Four Floors
- Landscaped Garden
- Abbeville Village



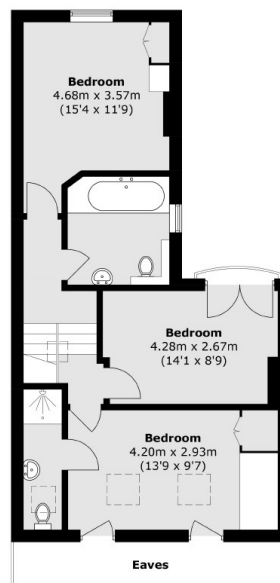




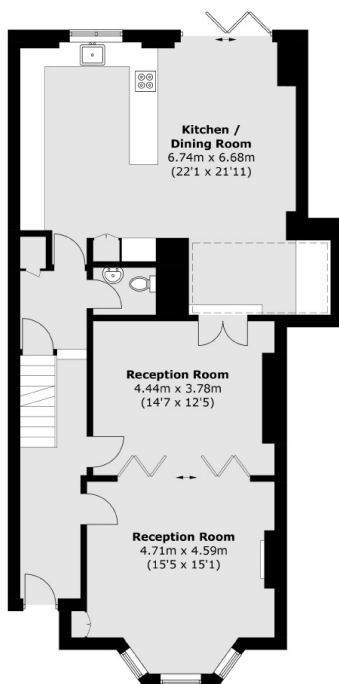
Shandon Road, London, SW4



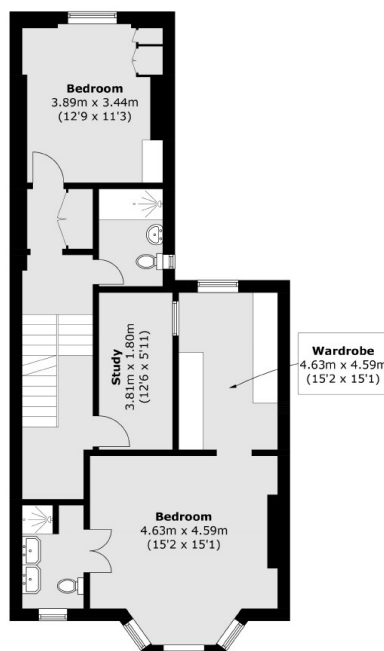
Basement



Second Floor



Ground Floor



First Floor

Total area (approx.): 239.5 sq. m (2577.9 sq. ft)
(Including Basement/ Excluding Eaves)

Dexters

Clapham South & Balham
9 Cavendish Parade
London
SW4 9DP
Lettings
0208 675 6750

Energy Rating: D. We aim to make our particulars both accurate and reliable. However they are not guaranteed; nor do they form part of an offer or contract. If you require clarification on any points then please contact us, especially if you're traveling some distance to view. Please note that appliances and heating systems have not been tested and therefore no warranties can be given as to their good working order.

RICS Regulated
Estate Agent
and Letting Agent

dexters.co.uk