



Clapham Common South Side, SW4

£542 Per week

A spacious two bedroom, two bathroom apartment situated in a much sought after development. Offers a high specification finish with wooden flooring, neutrally decorated throughout and an allocated parking space.

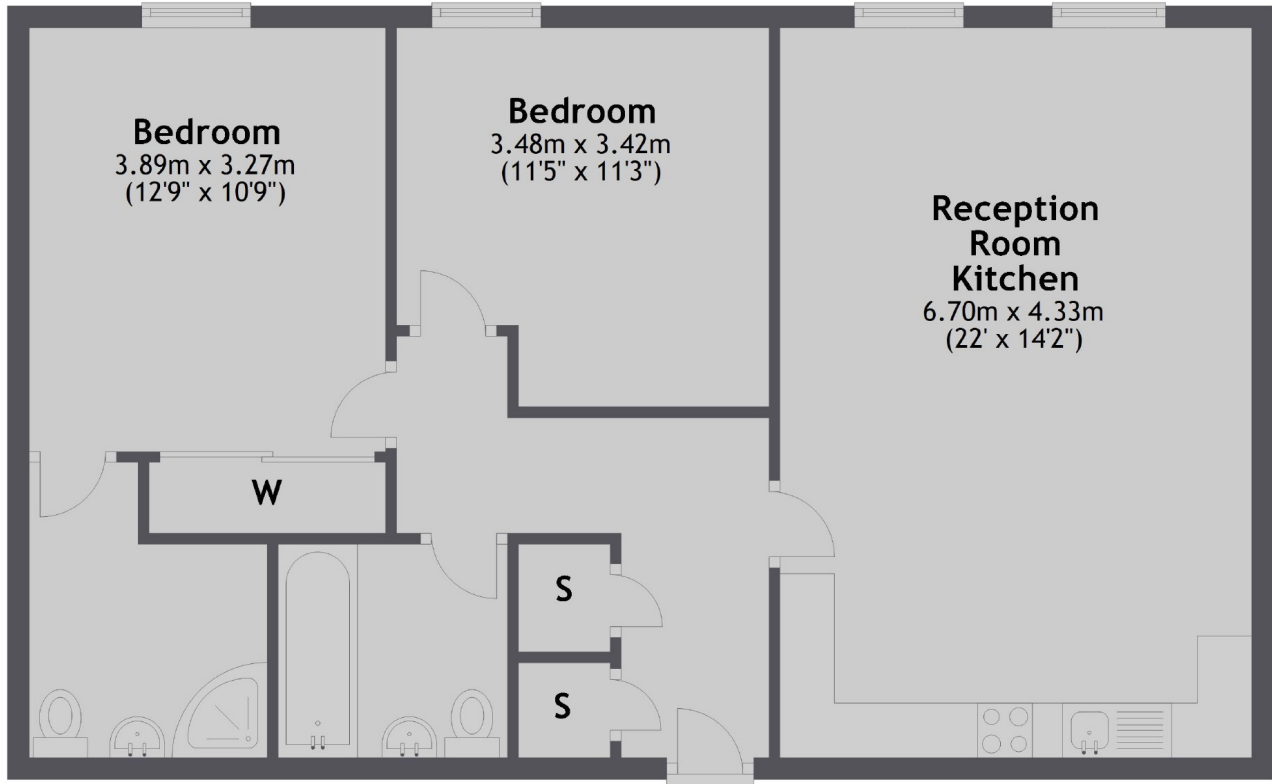
Situated opposite Clapham South Tube and Clapham Common, the property is surrounded by many amenities including Marks and Spencers, The Avalon pub and Costa Coffee.

Features

- Open Plan
- Two Double Bedrooms
- Two Bathrooms
- Allocated Parking
- Modern Kitchen
- Ideal Location

Clapham Common South Side, London, SW4

Third Floor



Total area: approx. 75.1 sq. metres (808.4 sq. feet)