



Upper Tooting Park, SW17

£8,000 Per calendar month

Dexters



Upper Tooting Park, SW17

Perfectly placed for both Balham and Tooting Bec. This exceptional six bedroom, six bathroom, semi-detached house has been newly refurbished and finished to a high specification.

Arranged over three floors and finished to a modern specification throughout.

The ground floor of the property offers two double bedrooms, both with en suite shower rooms, a spacious reception room, separate kitchen with space for dining, a utility room and WC. There is also access to a private south west facing garden.

On the first floor and second floor there are four further double bedrooms, four en suite shower rooms and a study room.

Located less than half a mile from both Balham and Tooting Bec underground station, along with Wandsworth Common mainline nearby. Ideal for professional sharers or a family.

Features

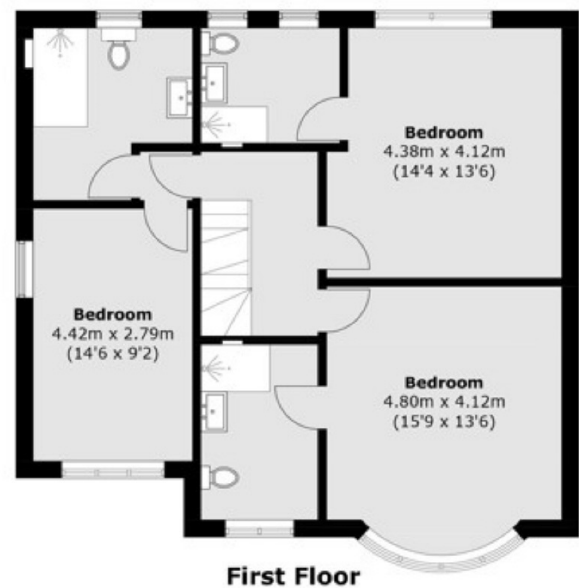
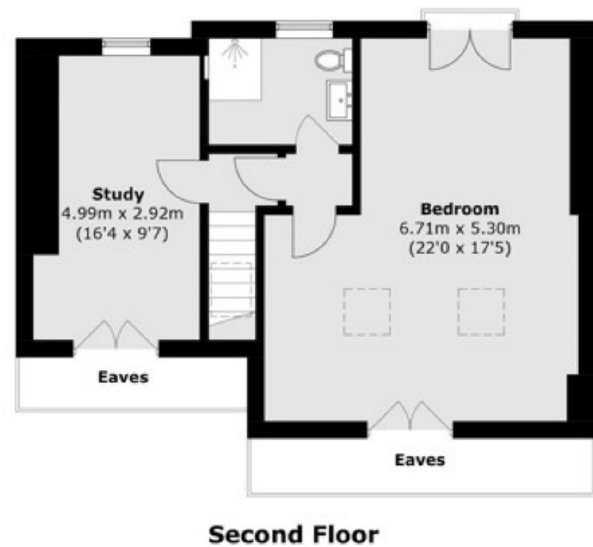
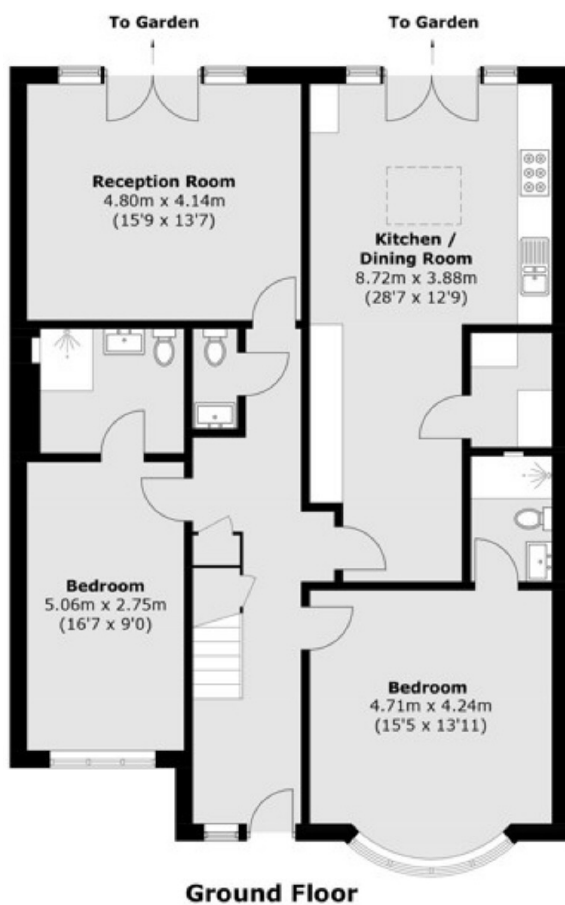
- Newly Refurbished
- Six Double Bedrooms
- Six Bathrooms
- Spacious Reception Room
- Eat In Kitchen
- South Facing Private Garden







Upper Tooting Park, London, SW17



Total area (approx.): 253.4 sq. m (2,727.6 sq. ft)
(Excluding Eaves)

Dexters

Clapham South & Balham
9 Cavendish Parade
London
SW4 9DP
Lettings
0208 675 6750

Energy Rating: D. We aim to make our particulars both accurate and reliable. However they are not guaranteed; nor do they form part of an offer or contract. If you require clarification on any points then please contact us, especially if you're traveling some distance to view. Please note that appliances and heating systems have not been tested and therefore no warranties can be given as to their good working order.

RICS Regulated
Estate Agent
and Letting Agent

dexters.co.uk