



Elms Crescent, SW4

£3,500 Per calendar month

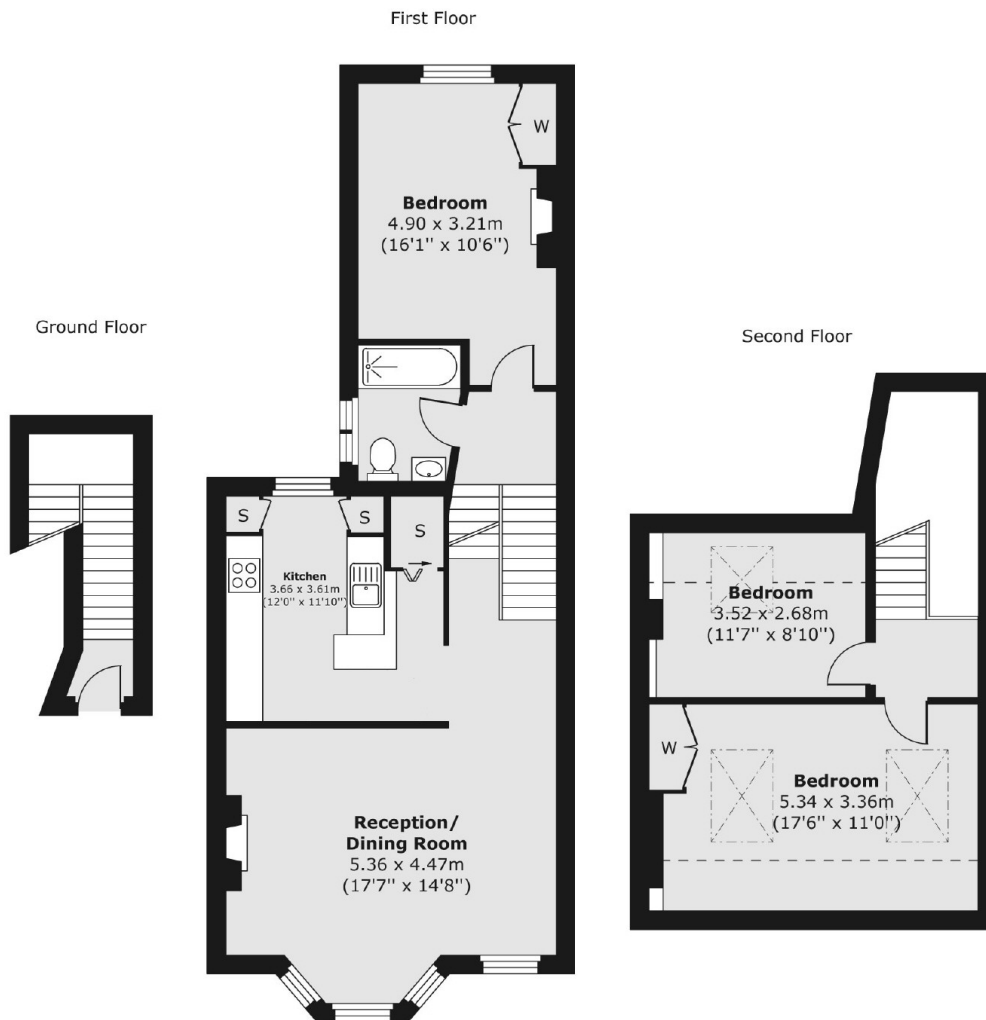
Split over two floors, this three bedroom flat is located in the heart of the Abbeville Village. With an open plan reception room and kitchen, neutral interior and a modern bathroom. Perfect for professional sharers.

Elms Crescent is located in a quiet residential area within close walking distance to the local restaurants and shops, including the popular Abbeville Village.

Features

- Top Floor Flat
- Split-Level
- Three Double Bedrooms
- Modern Bathroom
- Open Plan Kitchen
- Neutral Interior

Elms Crescent, London, SW4



Total area (approx.) 99.53 sq. m (1,071 sq. ft)

Dexters

Clapham South & Balham
9 Cavendish Parade
London
SW4 9DP
Lettings
0208 675 6750

Energy Rating: E. We aim to make our particulars both accurate and reliable. However they are not guaranteed; nor do they form part of an offer or contract. If you require clarification on any points then please contact us, especially if you're traveling some distance to view. Please note that appliances and heating systems have not been tested and therefore no warranties can be given as to their good working order.

 **RICS** | Regulated
Estate Agent
and Letting Agent

dexters.co.uk