



Nightingale Lane, SW12

£2,300 Per calendar month

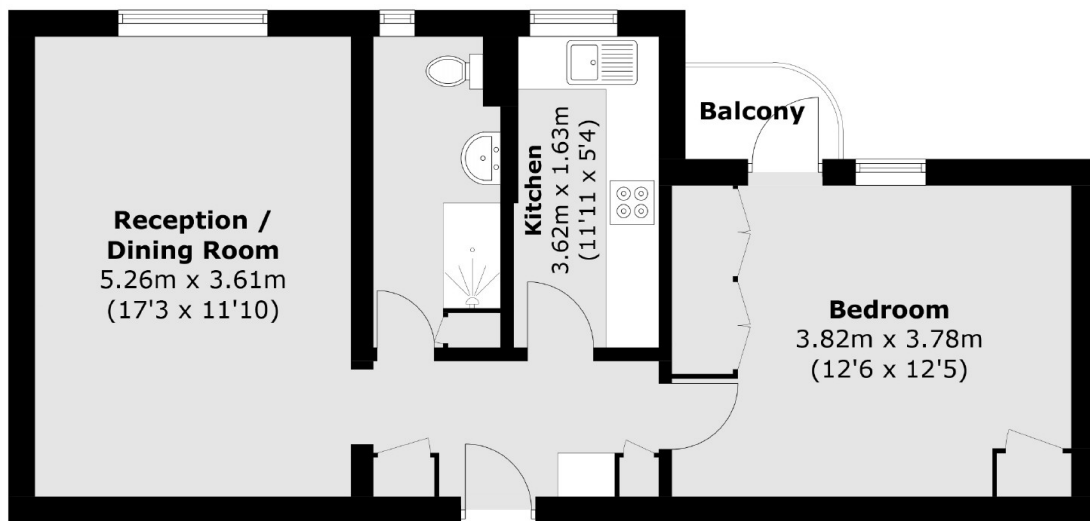
A recently refurbished one bedroom flat located in the Nightingale Triangle. Offering a spacious reception room, a modern galley kitchen, built-in wardrobes in the bedroom and a newly renovated bathroom with a walk-in shower.

Hightrees House is located on Nightingale Lane which has direct access to Clapham Common Park and the areas many local amenities which include a Marks and Spencer's food hall.

Features

- One Double Bedroom
- Spacious Reception Room
- Parquet Flooring
- Private Balcony
- Gym And Pool
- Communal Roof Terrace

Nightingale Lane, London, SW12



Total area (approx.): 54.2 sq. m (583.4 sq. ft)
Balcony (approx.): 1.7 sq. m (18.3 sq. ft)