



Nightingale Lane, SW12

£2,400 Per week

A recently refurbished one bedroom flat located in the Nightingale Triangle. Offering a spacious reception room, a modern galley kitchen, built-in wardrobes in the bedroom and a newly renovated bathroom with a walk-in shower.

Hightrees House is located on Nightingale Lane which has direct access to Clapham Common Park and the areas many local amenities which include a Marks and Spencer's food hall.

Features

- One Double Bedroom
- Spacious Reception Room
- Parquet Flooring
- Private Balcony
- Gym And Pool
- Communal Roof Terrace

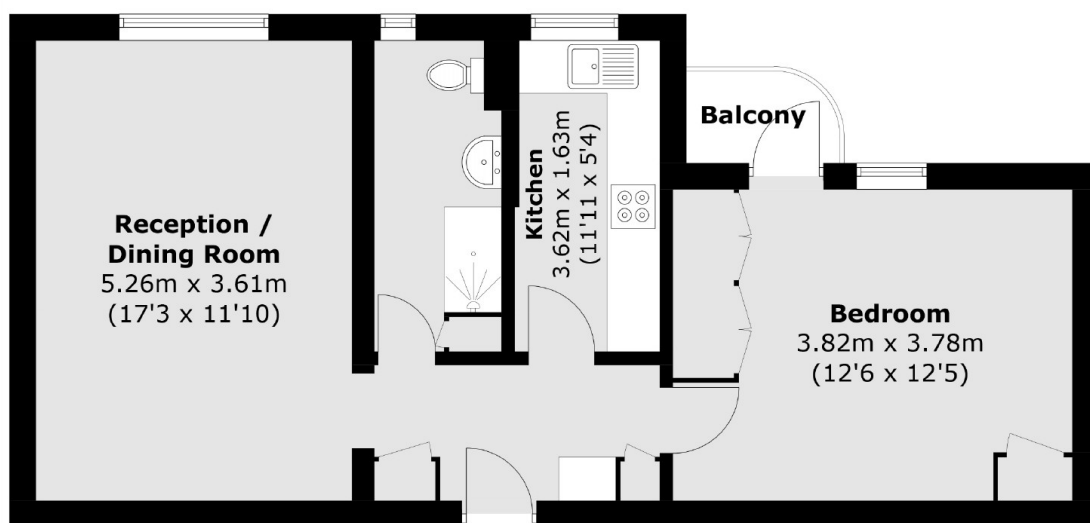


Nightingale Lane, SW12

The property also comes with a private balcony and access to a communal roof terrace, gym and swimming pool.



Nightingale Lane, London, SW12



Total area (approx.): 54.2 sq. m (583.4 sq. ft)
Balcony (approx.): 1.7 sq. m (18.3 sq. ft)

Dexters

Clapham South & Balham
9 Cavendish Parade
London
SW4 9DP
Lettings
0208 675 6750

Energy Rating: C. We aim to make our particulars both accurate and reliable. However they are not guaranteed; nor do they form part of an offer or contract. If you require clarification on any points then please contact us, especially if you're traveling some distance to view. Please note that appliances and heating systems have not been tested and therefore no warranties can be given as to their good working order.

 **RICS** | Regulated
Estate Agent
and Letting Agent

[dexters.co.uk](https://www.dexters.co.uk)