



## Crescent Lane, SW4

£2,600 Per calendar month

**Dexters**



## Crescent Lane, SW4

Split over two floors, this two bedroom property has been finished to a good standard throughout. Offering a reception room with space for dining and a stylish eat-in kitchen with access to a private balcony.

A residential street moments from the local shops, restaurants and cafés of Abbeville Road, with Clapham South and Clapham Common stations a stroll away.

### Features

- Two Double Bedrooms
- Split-Level
- Top Floor Flat
- Separate Reception Room
- Eat-In Kitchen
- Private Balcony



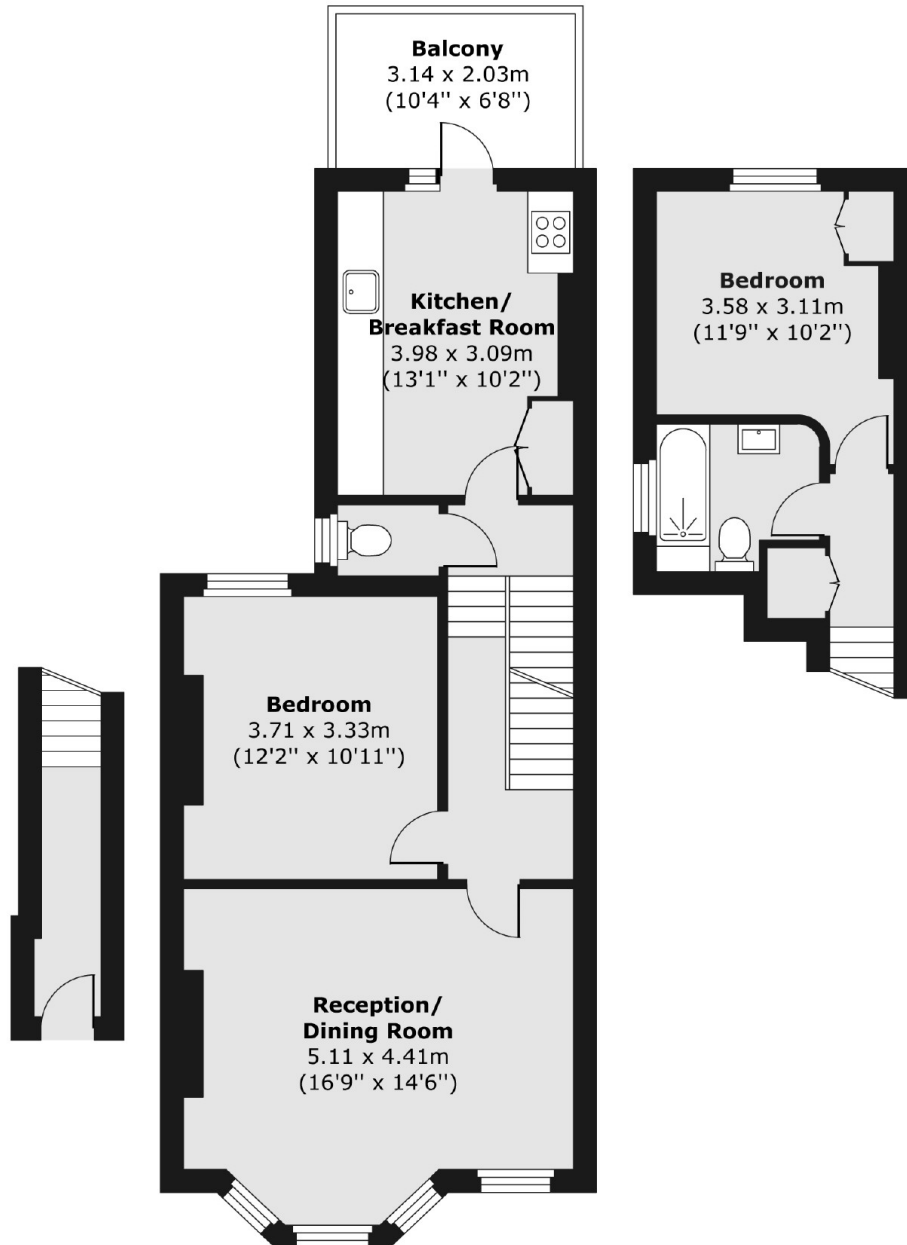


# Crescent Lane, London, SW4

Ground Floor Entrance

First Floor

Second Floor



Total area (approx.) 77.05 sq. m (829 sq. ft)  
Balcony area (approx.) 6.37 sq. m (69 sq. ft)

## Dexters

Clapham South & Balham  
9 Cavendish Parade  
London  
SW4 9DP  
Lettings  
0208 675 6750

Energy Rating: E. We aim to make our particulars both accurate and reliable. However they are not guaranteed; nor do they form part of an offer or contract. If you require clarification on any points then please contact us, especially if you're traveling some distance to view. Please note that appliances and heating systems have not been tested and therefore no warranties can be given as to their good working order.

 **RICS** | Regulated  
Estate Agent  
and Letting Agent

[dexters.co.uk](https://www.dexters.co.uk)