



## Endlesham Road, SW12

£2,800 Per calendar month

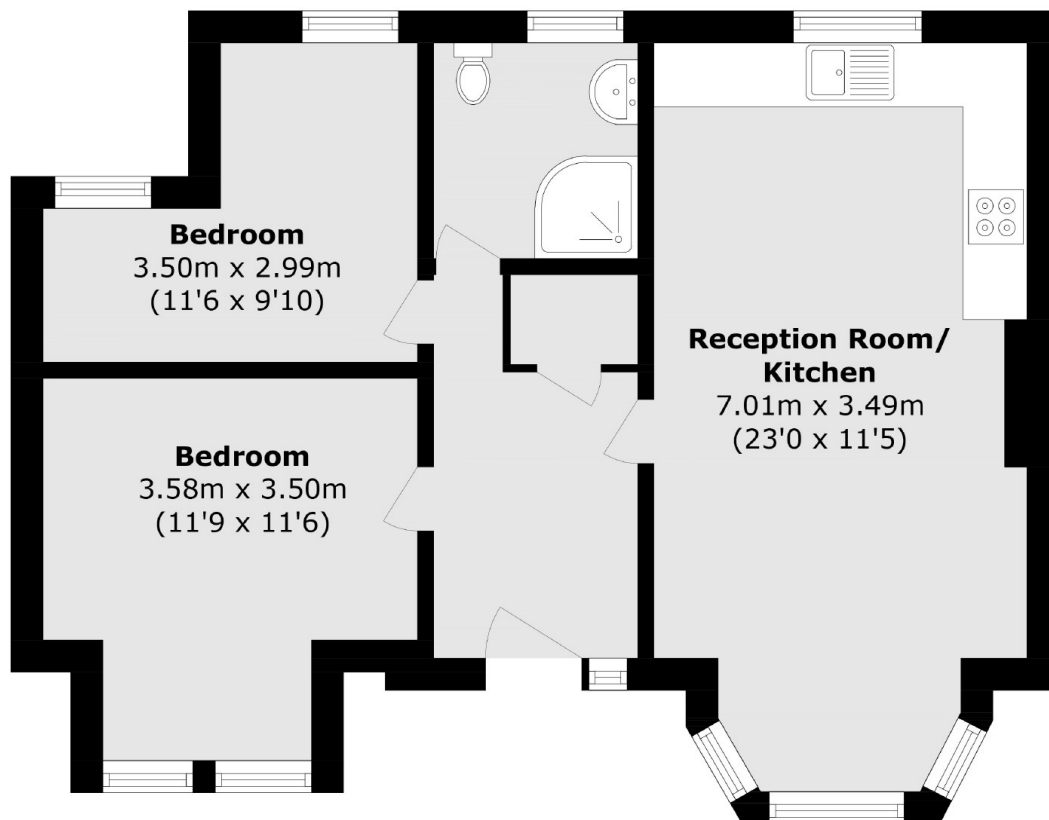
Set on the lower ground floor this two bedroom flat has been recently refurbished throughout. Offering a spacious open plan reception room, wooden flooring, a modern kitchen, a private garden and off-street parking.

Endlesham Road is a pretty residential street moments from the Bellevue Road, Northcote Road and both Clapham and Wandsworth Commons.

### Features

- Two Bedrooms
- Lower Ground Floor
- Spacious Reception Room
- Modern Kitchen
- Private Garden
- Off-Street Parking

# Endlesham Road, London, SW12



Total area (approx.): 54.5 sq. m (586.6 sq. ft)