



## Endlesham Road, SW12

£2,250 Per calendar month

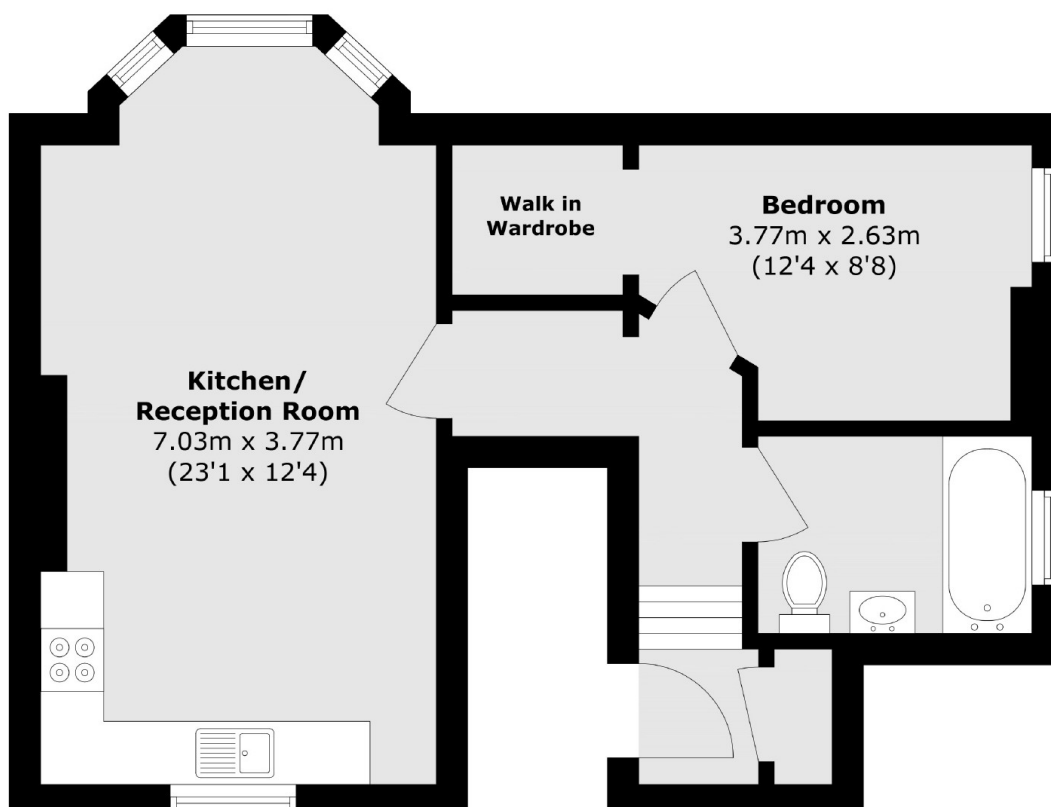
Recently refurbished throughout, this one bedroom flat in the heart of Balham is ideal for a professional couple. Offering a spacious open plan reception room with a large bay window, wooden flooring and a modern kitchen.

Endlesham Road is a pretty residential street moments from the Bellevue Road, Northcote Road and both Clapham and Wandsworth Commons.

### Features

- One Double Bedroom
- First Floor Flat
- Open Plan Reception
- Modern Kitchen
- Recently Refurbished
- Desirable Location

# Endlesham Road, London, SW12



Total area (approx.): 50.4 sq. m (542.5 sq. ft)