



Nightingale Lane, SW12

£2,550 Per calendar month

Finished to a modern standard throughout, this two bedroom flat is ideal for a professional couple. Offering a reception room with wooden flooring, a kitchen and access to a communal pool/gym and roof terrace. Hot water and heating are included within the rental price.

Hightrees House is located on Nightingale Lane which has direct access to Clapham Common Park and the areas many local amenities which include a Marks and Spencer's food hall.

Features

- Spacious Double Bedroom
- Wooden Flooring
- Concierge Service
- Modern Bathroom
- Hot Water/Heating Included
- Communal Pool/Gym

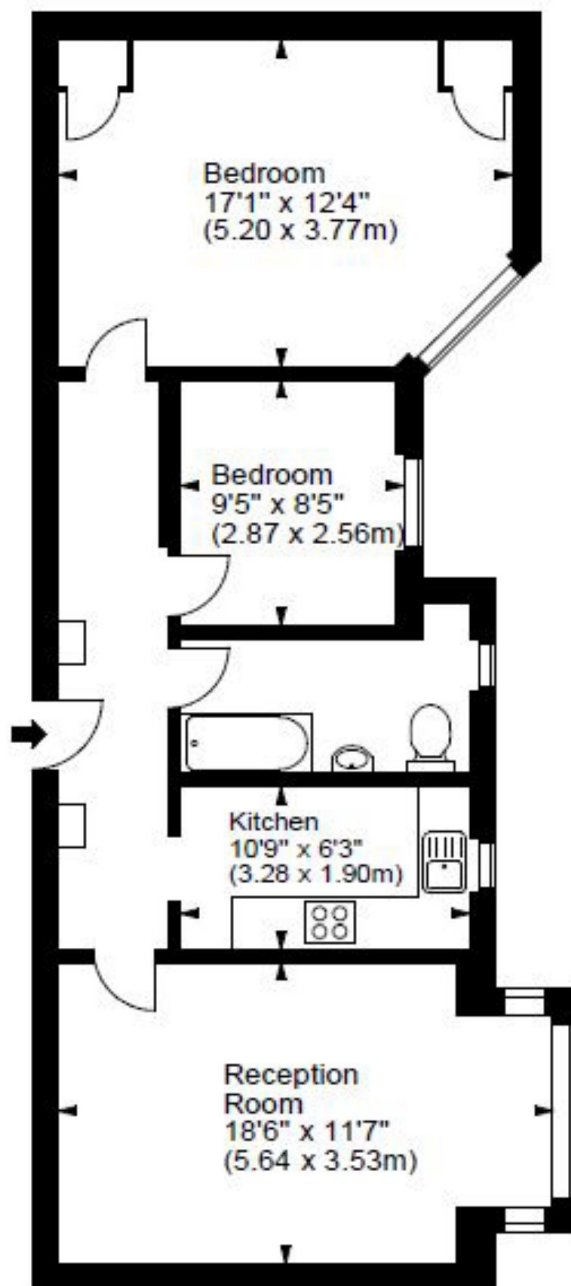


Nightingale Lane, SW12



Nightingale Lane, London, SW12

Approx. Gross Internal Area
718 Sq Ft - 66.70 Sq M



Third Floor