



## Cavendish Road, SW12

£2,500 Per calendar month

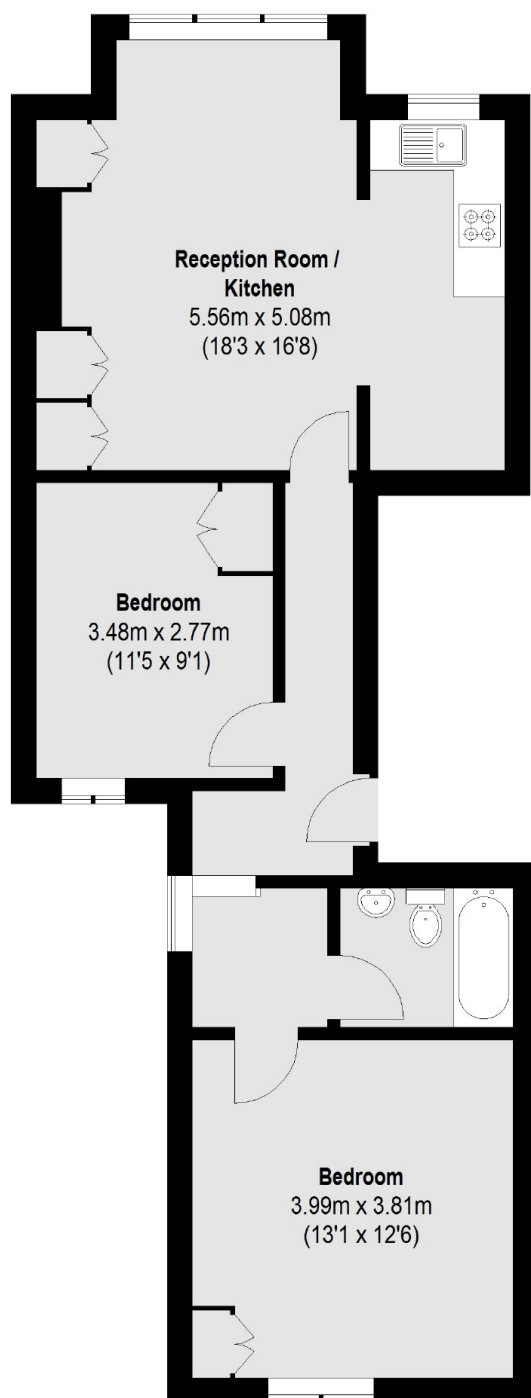
A well-presented two double bedroom flat, situated on the first floor of a Victorian conversion. The property is neutrally decorated throughout and comes with a large semi open plan reception room and kitchen.

Cavendish Road is conveniently located close to the areas many local amenities, with access to the open spaces of Clapham Common and the popular Abbeville Village.

### Features

- First Floor Flat
- Two Double Bedrooms
- Open Plan Kitchen
- Large Reception Room
- Tiled Bathroom
- Neutral Interior

# Cavendish Road, London, SW12



## First Floor

Total area (approx.): 63.92 sq. m (688 Sq. ft)

# Dexters

Clapham South & Balham  
9 Cavendish Parade  
London  
SW4 9DP  
Lettings  
0208 675 6750

Energy Rating: D. We aim to make our particulars both accurate and reliable. However they are not guaranteed; nor do they form part of an offer or contract. If you require clarification on any points then please contact us, especially if you're traveling some distance to view. Please note that appliances and heating systems have not been tested and therefore no warranties can be given as to their good working order.



dexters.co.uk