



Endlesham Road, SW12

£2,250 Per calendar month

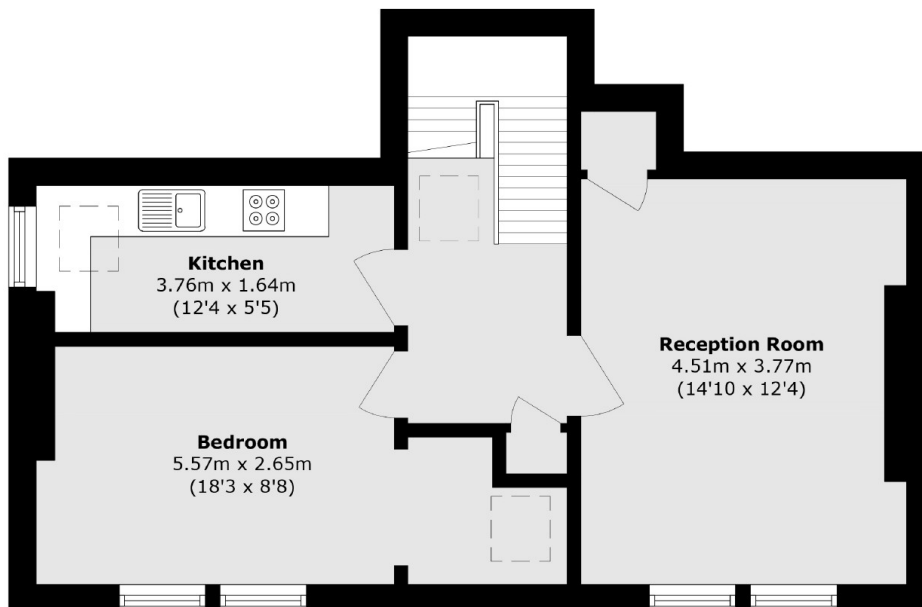
Recently refurbished and set on the top floor, this one bedroom flat in Balham is ideal for a professional couple. Offering a spacious reception room, a separate modern kitchen and neutral interior throughout.

Endlesham Road is a pretty residential street moments from the Bellevue Road, Northcote Road and both Clapham and Wandsworth Commons.

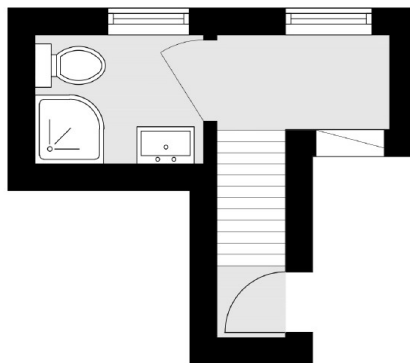
Features

- One Double Bedroom
- Recently Refurbished
- Modern Kitchen
- Spacious Reception
- Top Floor Flat
- Close To Transport

Endlesham Road, London, SW12



Third Floor



Second Floor

Total area (approx.): 53.4 sq. m (574.7 sq. ft)