



## Scrutton Close, SW12

£2,400 Per calendar month

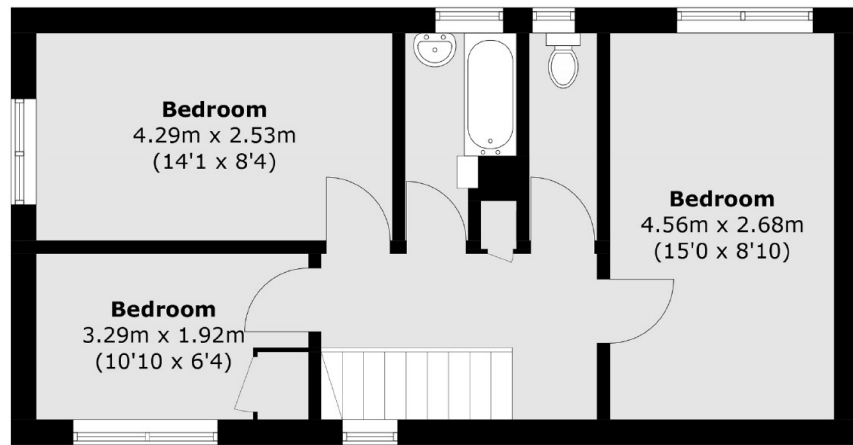
This two storey terraced house offers spacious and ample storage throughout. The property comes with an eat-in kitchen and a large rear garden. Ideal for families or a professional couple.

Scrutton Close is well situated for access to Kings Avenue whilst being moments from the shops, restaurants and bars of the Abbeville village.

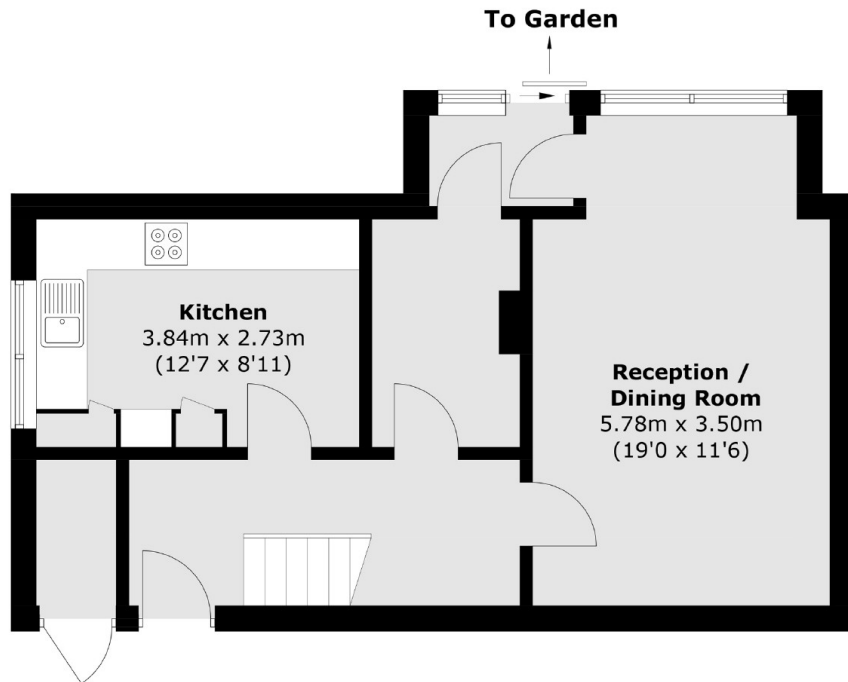
### Features

- Two Storey House
- Three Double Bedrooms
- Eat-In Kitchen
- Large Reception
- Separate W.C.
- Rear Garden

# Scrutton Close, London, SW12



**First Floor**



**Ground Floor**

Total area (approx.): 90.8 sq. m ( 977.4 sq. ft)  
(Excluding external storage)