



## Chestnut Grove, SW12

£2,350 Per calendar month

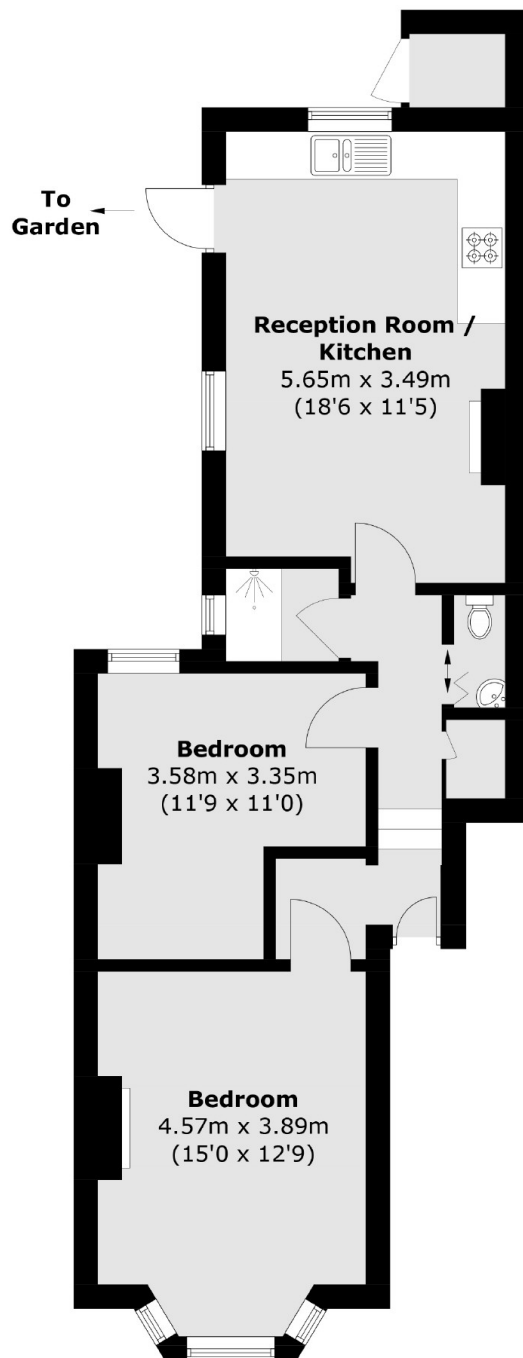
A well-presented two double bedroom flat situated on the ground floor of a Victorian conversion. Offering an open plan reception with kitchen, wooden flooring throughout and the property further benefits from a private patio garden.

Chestnut Grove is located for the many amenities Balham has to offer, which include Sainsbury's and Waitrose supermarkets and Hildreth Street Market.

### Features

- Ground Floor Flat
- Two Double Bedrooms
- Open Plan Kitchen
- Wooden Floors
- Tiled Bathroom
- Private Patio Garden

# Chestnut Grove, London, SW12



Total area (approx.) : 54.8 sq. m (589.9 sq. ft)  
Outside Cupboard : 1.1 sq. m (11.8 sq. ft)