



## Nightingale Lane, SW12

£2,500 Per calendar month

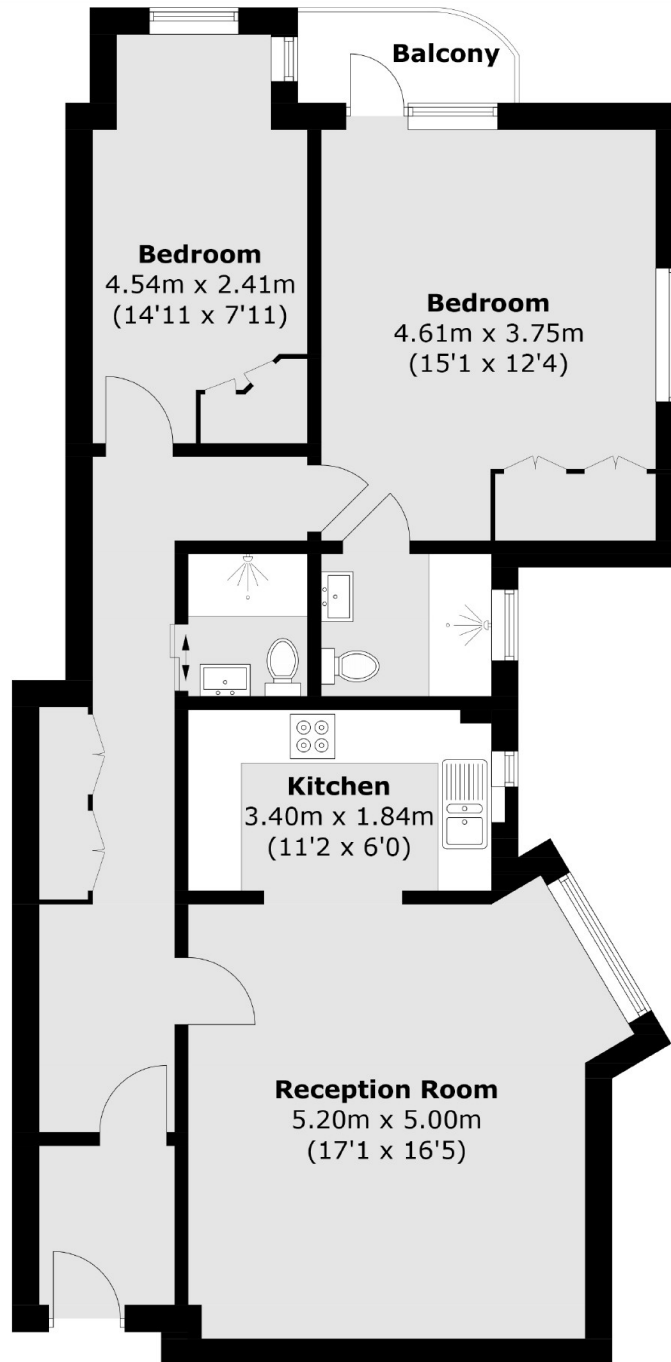
Finished to a modern standard throughout, this spacious two bedroom, two bathroom flat is ideal for a professional couple or sharers. Offering a reception room with wooden flooring, a modern kitchen and access to a communal pool/gym.

Hightrees House is located on Nightingale Lane which has direct access to Clapham Common Park and the areas many local amenities which include a Marks and Spencer's food hall.

### Features

- Two Double Bedrooms
- Two Bathrooms
- Communal Pool/Gym
- Spacious Reception Room
- Modern Kitchen
- Clapham Common

# Nightingale Lane, London, SW12



Total area (approx.): 80.4 sq. m (865.4 sq. ft)  
Balcony: 2.3 sq. m (24.7 sq. ft)