



Poynders Road, SW4

£2,000 Per calendar month

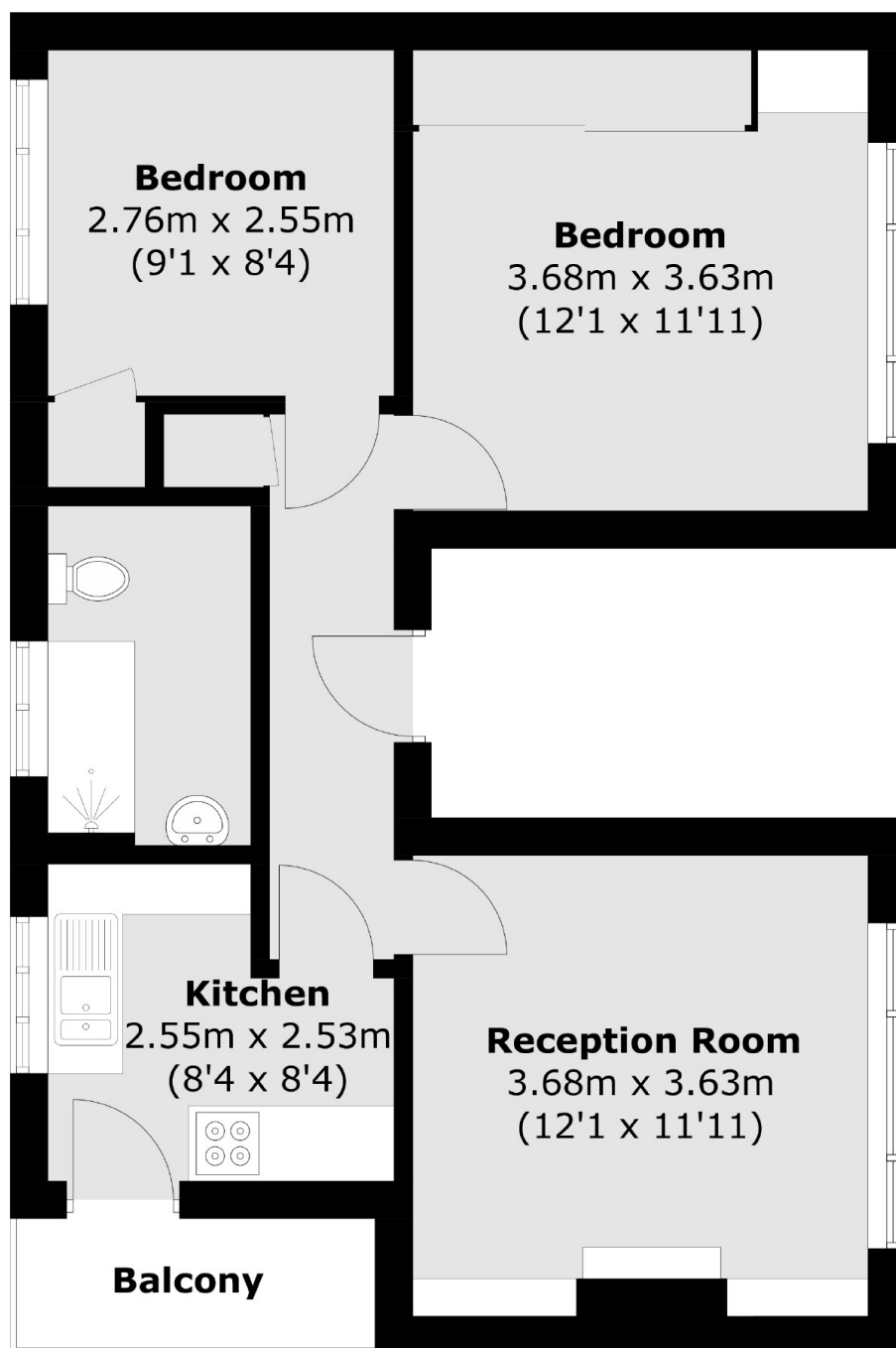
Set on the first floor of this secure development in Clapham South, this two bedroom flat has been newly refurbished throughout. Offering a spacious reception room, a modern kitchen, bathroom and communal garden.

Poynders Court is ideally located for the local amenities of Clapham South and Balham with access to various supermarkets, bars and restaurants. Clapham South tube station is also in close proximity.

Features

- Two Double Bedrooms
- First Floor Flat
- Newly Refurbished
- Spacious Reception Room
- Modern Bathroom
- Ideal Location

Poynders Road, London, SW4



Total area (approx.): 55.8 sq. m (568.3 sq. ft)
Balcony: 2.9 sq. m (31.2 sq. ft)