



## Bonneville Gardens, SW4

£2,050 Per calendar month

This beautiful one bedroom flat is situated on the ground floor of a Victorian conversion. Located in the heart of the Abbeville Village. Accommodation includes a spacious private garden and off-street parking.

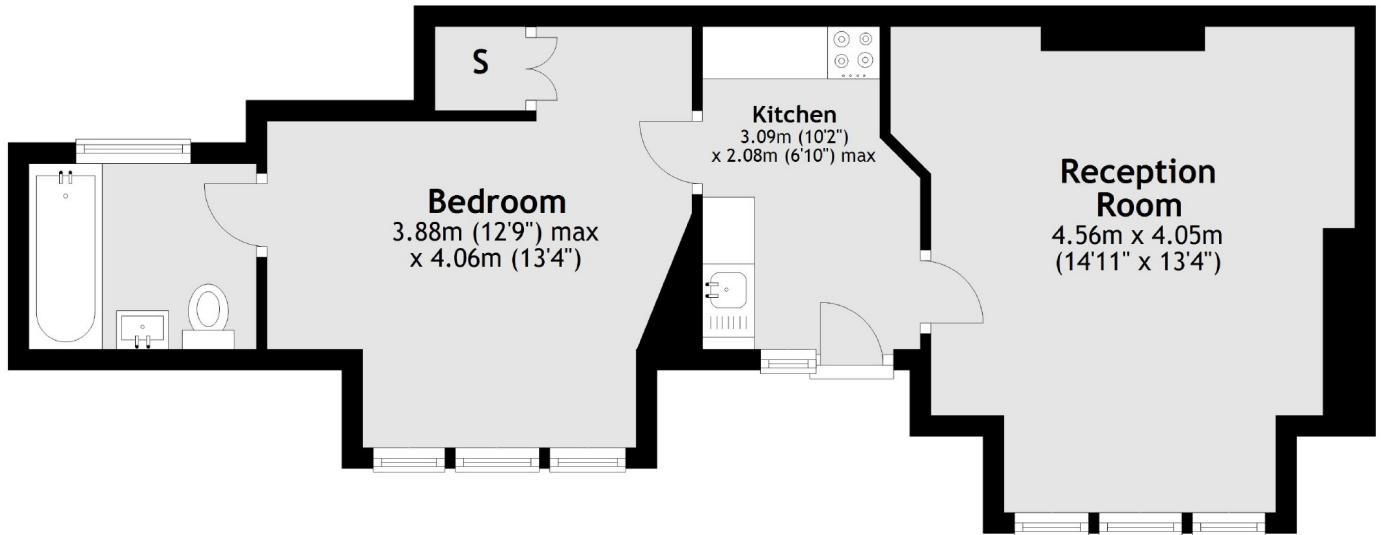
Bonneville Gardens is a tree-lined residential road located in the Abbeville Village, an area renowned for its many local restaurants and boutique shops. Video tour available.

### Features

- One Double Bedroom
- Spacious Reception
- Separate Kitchen
- Modern Bathroom
- Spacious Garden
- Off-Street Parking

# Bonneville Gardens, London, SW4

## Ground Floor



Total area: approx. 42.2 sq. metres (453.8 sq. feet)