



Ravenslea Road, SW12

£4,800 Per calendar month

This spacious four bedroom house is located within the heart of Balham. Offering a good entertaining space with an open plan kitchen and dining room and access to a rear garden.

Located within easy reach of Balham High Road with a great selection of shops, bars and amenities which include Waitrose supermarket and Hildreth Street Market.

Features

- Four Bedroom House
- Eat-In Kitchen
- Spacious Reception
- Wooden Flooring
- Private Garden
- Neutral Interior



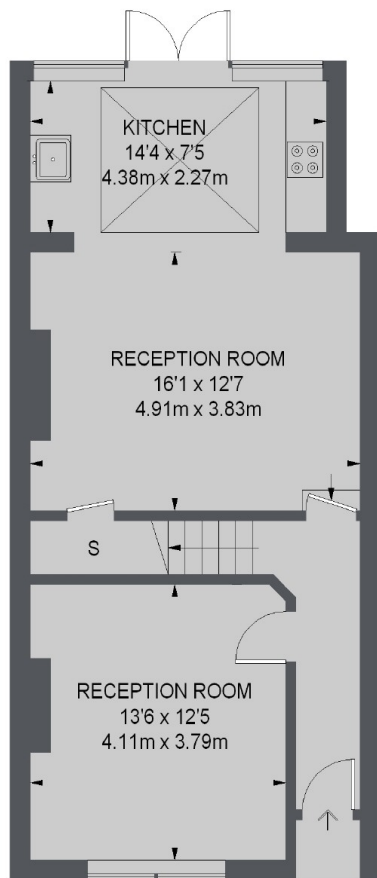
Ravenslea Road, SW12

This property is set over three floors and comes with wooden flooring throughout. The ground floor comes with a large separate reception room, an open plan kitchen with dining room. This leads out to a private decked garden.

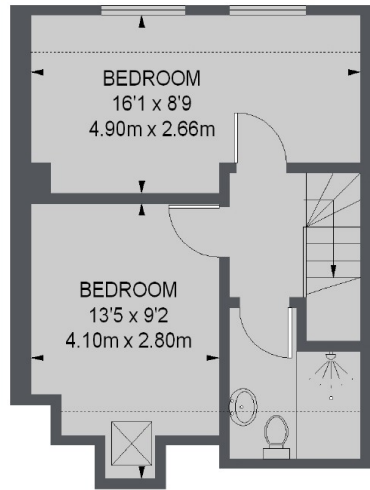
The first floor offers two double bedrooms and a family bathroom, the second floor has a further two double bedrooms and shower room. Ideal for professional sharers looking for spacious living close to transport links.



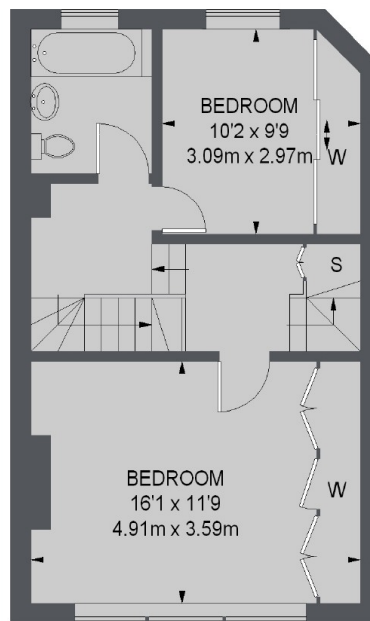
Ravenslea Road, London, SW12




GROUND FLOOR



SECOND FLOOR



FIRST FLOOR

 = REDUCED HEADROOM
BELOW 1.5 M / 5'0

TOTAL APPROX. FLOOR AREA
1389 SQ. FT. (129.05 SQ. M.)