



Clapham Common South Side, £1,850 Per calendar month

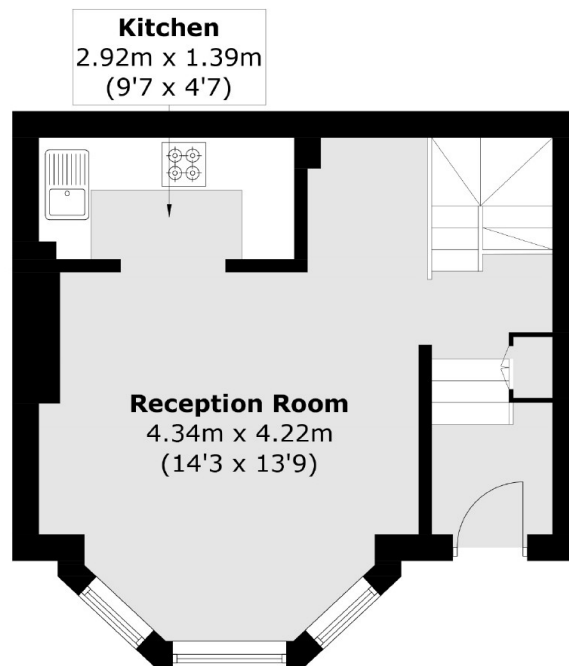
A lovely one bedroom, split-level conversion flat with views over Clapham Common. The property comes with an open plan reception room, walk-in wardrobe, wooden flooring and its own private entrance.

Situated equidistant to Clapham Common and Clapham South you are ideally located for all of Claphams amenities including the Common and Abbeville Village.

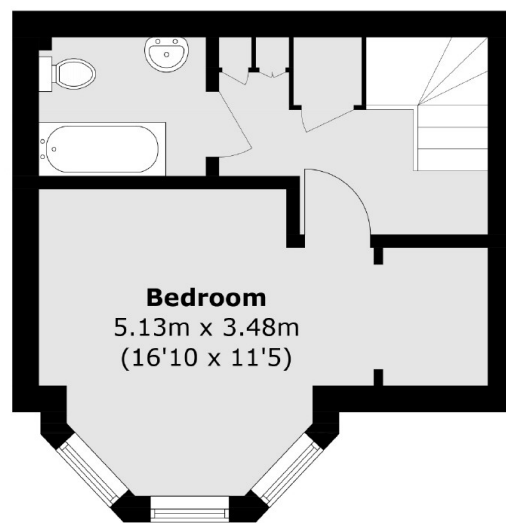
Features

- One Double Bedroom
- Open Plan Reception
- Ample Storage
- Split-Level Flat
- Wooden Flooring
- Near Clapham Common

Clapham Common South Side, London, SW4



Ground Floor



Lower Ground Floor

Total area (approx.): 53.4 sq. m (574.8 sq. ft)