



Clapham Common South Side, £3,000 Per calendar month

This impressive period conversion is presented in immaculate order throughout and comprises a large open plan reception room with a modern kitchen and ample room to dine.

Ideally located for the many local shops, restaurants and bars of Abbeville Village and Clapham Old Town. Clapham Common and Clapham South station are just a stroll away, with the Common itself on your doorstep.

Features

- Two Double Bedrooms
- Two Bathrooms
- Open Plan Reception
- Modern Kitchen
- Private Garden
- Abbeville Village



Clapham Common South Side,

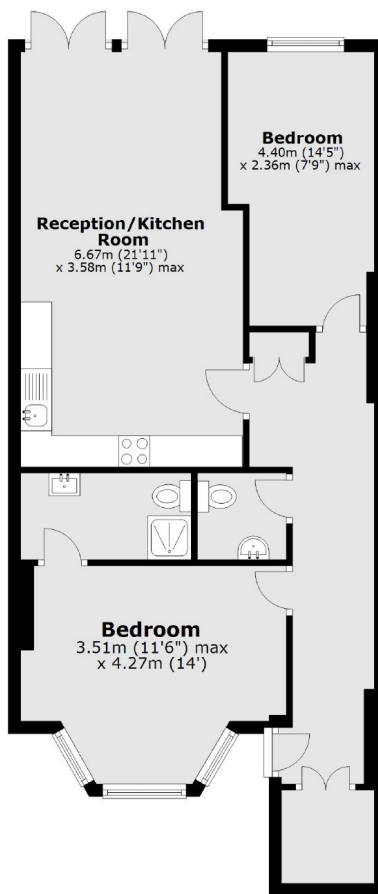
There is two bedrooms, two bathrooms, one of which is an en suite, and to the rear a spacious private garden.

All set on the ground floor, the property also comes with beautiful French doors, neutral interior, dark wood flooring and storage space throughout.



Clapham Common South Side, London, SW4

Ground Floor



Total area: approx. 67.2 sq. metres (723.4 sq. feet)