



Crescent Lane, SW4

£4,500 Per calendar month

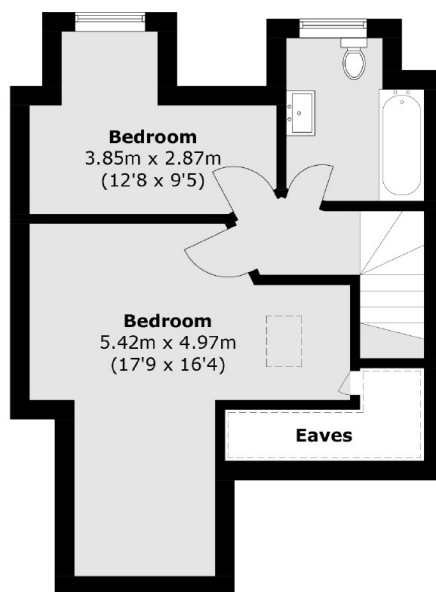
A split-level, four bedroom maisonette located nearby Abbeville Road. Accommodation includes a spacious open plan reception room and kitchen with dining space, two bathrooms and storage space throughout.

Crescent Lane located for access to many local shops, restaurants and cafés of Abbeville Village, with Clapham South and Common stations a short stroll away.

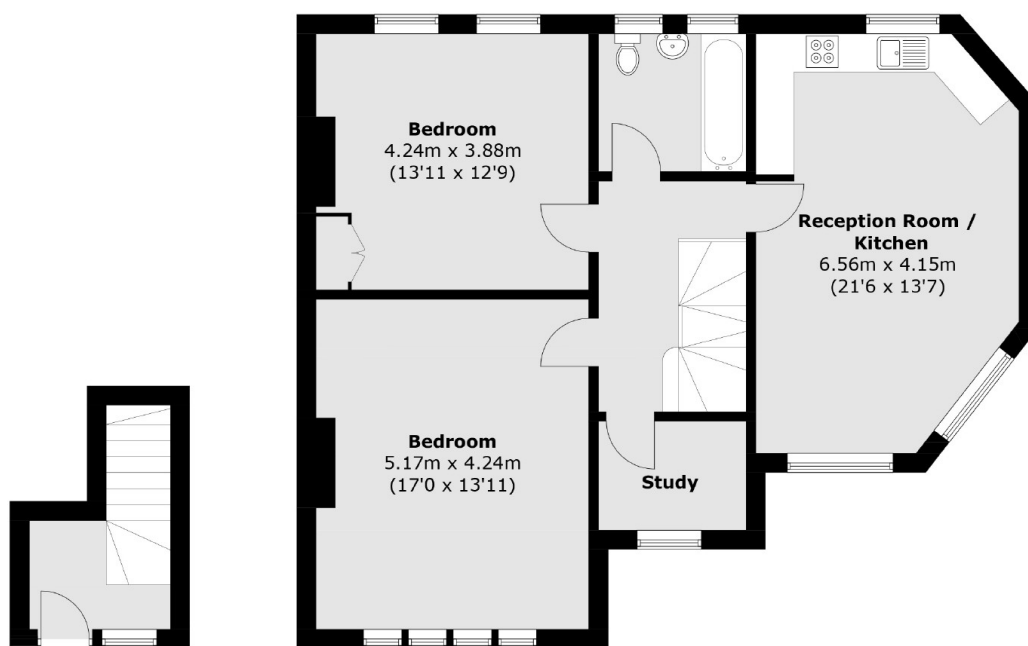
Features

- Four Double Bedrooms
- Open Plan Reception
- Dining Space
- Two Bathrooms
- Storage Space
- Local Amenities

Crescent Lane, London, SW4



Second Floor



Ground Floor

First Floor

Total area (approx.): 126.8 sq. m (1,364.8 sq. ft)