



## Elms Crescent, SW4

£2,450 Per calendar month

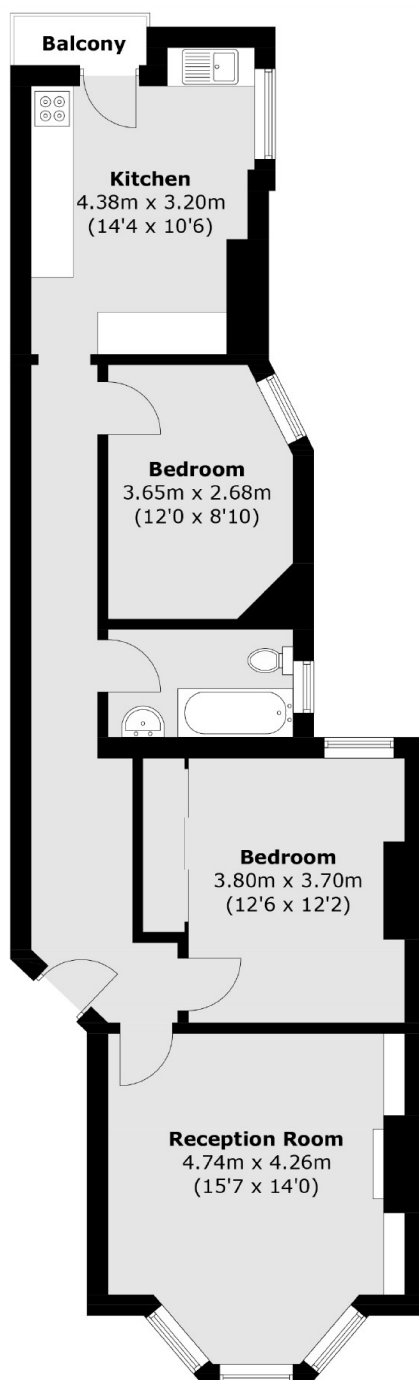
A first floor mansion apartment situated in Abbeville Village. Comprising a good sized reception room, a separate kitchen/breakfast room with a balcony, two double bedrooms and a bathroom. Outside there are communal gardens.

Nestled amongst the residential houses and located in close proximity to the sought after Abbeville Village with its boutiques shops, restaurants and pubs.

### Features

- Two Double Bedroom
- Eat-In Kitchen
- Tiled Bathroom
- Communal Gardens
- Small Balcony
- Abbeville Village

# Elms Crescent, London, SW4



## First Floor

Total area (approx.): 72.6 sq. m (781.4 sq. ft)  
Balcony area : 1.3 sq. m (14.0 sq. ft)