



Elms Crescent, SW4

£6,000 Per calendar month

An exceptional fix bedroom family home in the heart of Abbeville Village. This attractive property provides spacious living throughout. Offering fix double bedrooms, a double reception room and a landscaped garden.

Elms Crescent is located in a residential area, within close walking distance the local cafés, restaurants and shops on Abbeville Road, as well as Clapham South tube station nearby.

Features

- Five Double Bedrooms
- Three Bathrooms
- Three Floors
- Double Reception Room
- Spacious Kitchen
- Landscaped Garden



Elms Crescent, SW4

Arranged over three floors, this substantial property comprises a double reception room, a WC and a modern kitchen with sky lights and space for dining. With double doors out to a large private garden. All on the ground floor.

The first floor offers three double bedrooms, a family bathroom and separate WC, whilst the second floor provides a further two double bedrooms and two bathrooms.

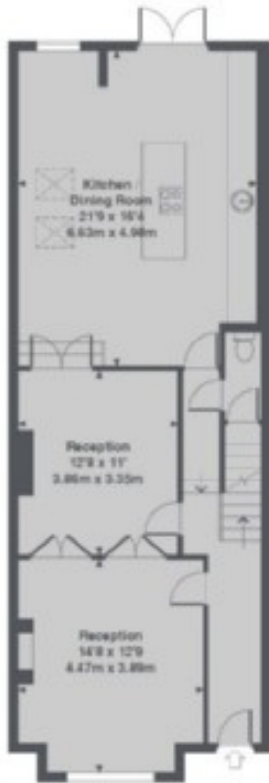
There is also a basement, ideal for extra storage.



Elms Crescent, London, SW4



Basement



Ground Floor



1st Floor



2nd Floor

Elms Crescent, Clapham, SW8
Total Approx. Floor area 2202 Sq. Ft. (204.6 Sq. M.)