



Queensville Road, SW12

£3,700 Per calendar month

Dexters



Queensville Road, SW12

Set on a residential road, this modern terraced house has four bedrooms, two bathrooms, a conservatory with bi-folding doors and wooden flooring throughout. Would be perfect for a family.

Arranged over three floors, this large family house comes with a reception room at the front of the property which offers sliding doors to create an open plan reception/kitchen area with a breakfast bar and dark oak laminate flooring.

This space also has sliding doors to a conservatory area and bi-folding doors out to a landscaped garden.

The first floor comes with three double bedrooms and a family bathroom.

With the top floor offering a further double bedroom with a large amount of storage and a shower room just off of the landing.

Queensville Road is a residential road with easy reach of the many amenities, schools and transport links in and around Balham and Clapham.

Features

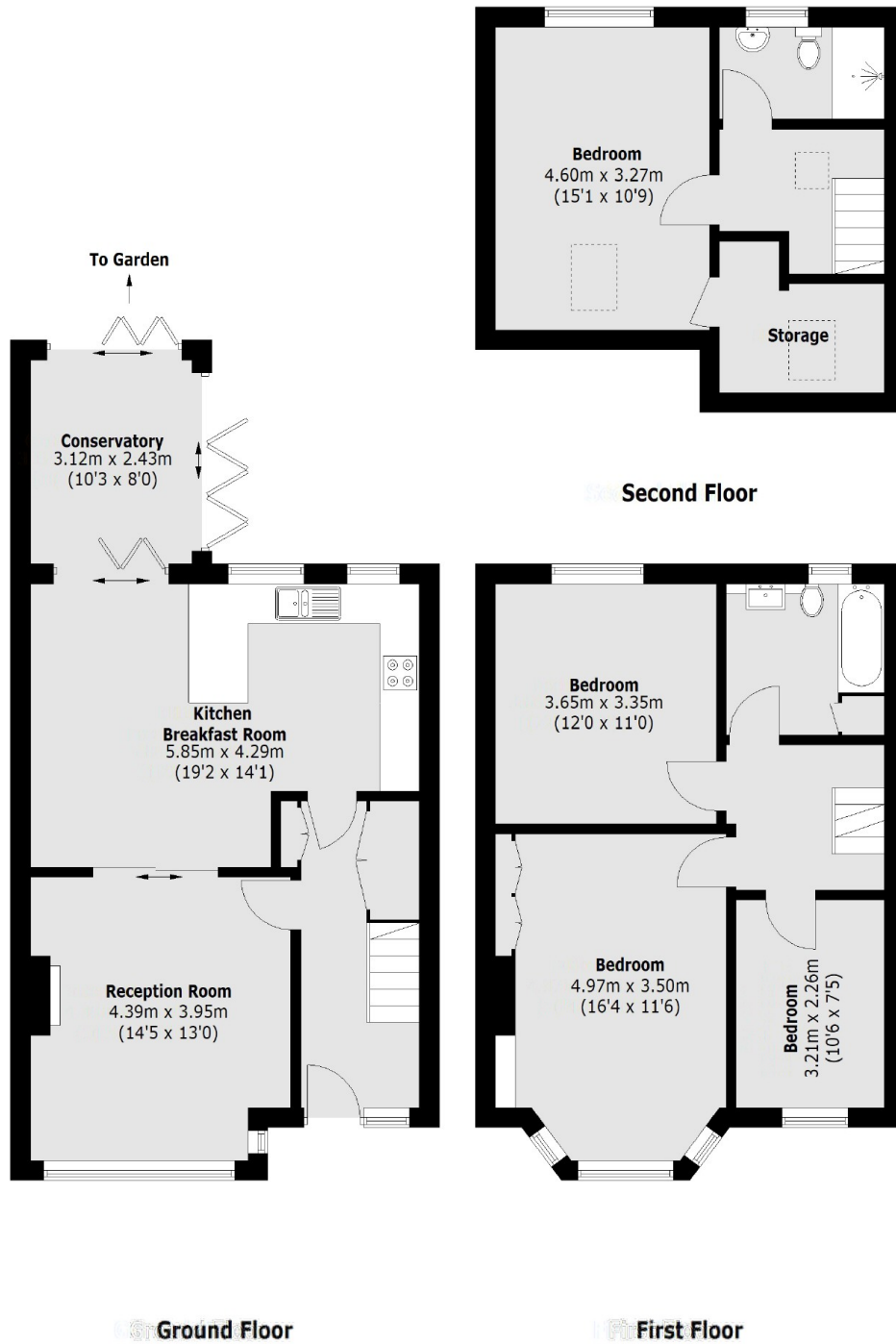
- Four Double Bedrooms
- Excellent Storage
- Modern Conservatory
- Landscaped Garden
- Double Glazing
- Unfurnished







Queensville Road, London, SW12



Total area (approx.): 136.9 sq. m (1,473.5 sq. ft)