

Cavendish Road, SW12

£2,500 Per calendar month

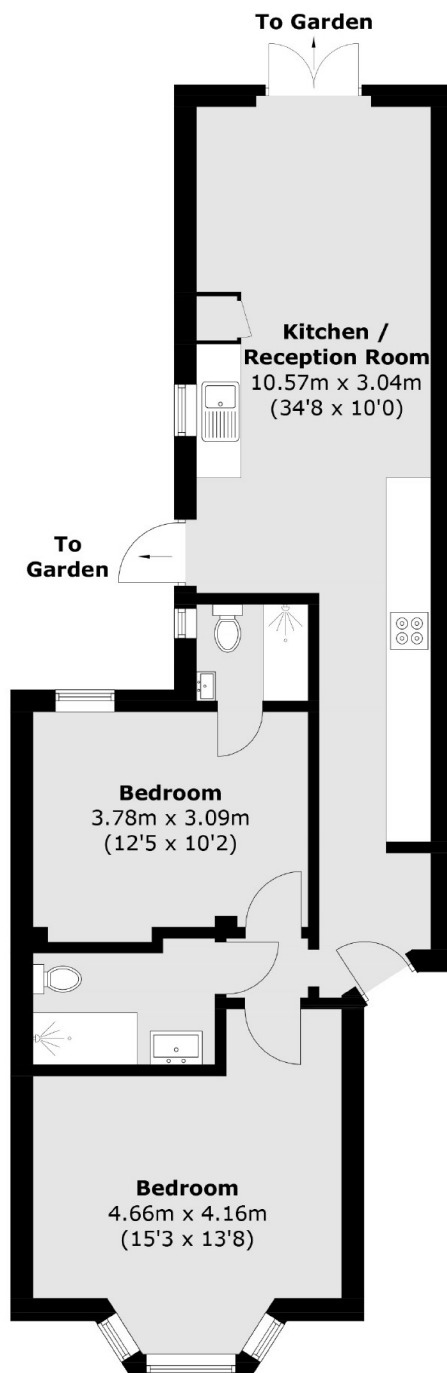
Located on the ground floor, this two bedroom garden flat offers an open plan reception room and kitchen, two bathrooms, one of which is an en suite and a large private garden.

The property is ideally located for the amenities Balham has to offer, which include large Waitrose, Hildreth Street Market, The Bedford pub and the popular Milk café.

Features

- Two Double Bedrooms
- Open Plan Reception
- Two Bathrooms
- Ground Floor Flat
- Private Garden
- Close To Station

Cavendish Road, London, SW12



Total area (approx.): 64.4 sq. m (693.2 sq. ft)