



## Clarence Avenue, SW4

£2,300 Per calendar month

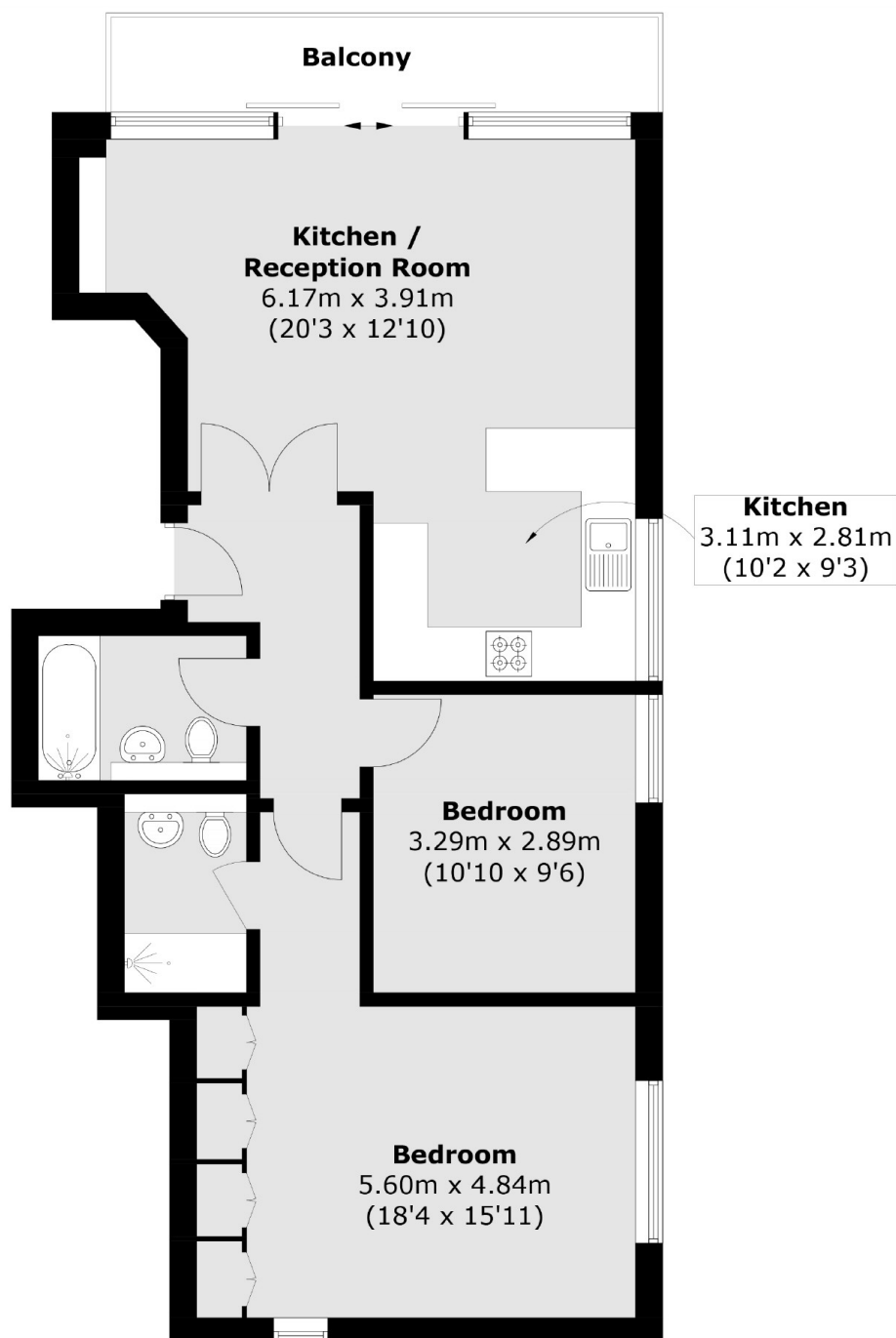
Situated in a purpose built development, this attractive two bedroom property is ideal for renters. Accommodation includes a spacious open plan reception room and kitchen with floor to ceiling windows, two bathrooms and a private balcony.

Well placed for the amenities of Clapham Common and Abbeville Village. Local transport links include Clapham Common and Clapham North underground stations.

### Features

- Two Double Bedrooms
- Two Bathrooms
- Open Plan Reception
- Wooden Flooring
- Large Private Balcony
- Local Amenities

# Clarence Avenue, London, SW4



Total area (approx.): 71.1 sq. m (765.3 sq. ft)  
Balcony area (approx.): 6.3 sq. m (67.8 sq. ft)