

192 Monton Road, Monton, Manchester, M30 9PY  
Tel: 0161 707 7584  
Email: [monton.sales@ascendproperties.com](mailto:monton.sales@ascendproperties.com),  
[monton.lettings@ascendproperties.com](mailto:monton.lettings@ascendproperties.com)  
[www.ascendproperties.com](http://www.ascendproperties.com)

# Ascend

Built on higher standards



Heyfields, Worsley, M28

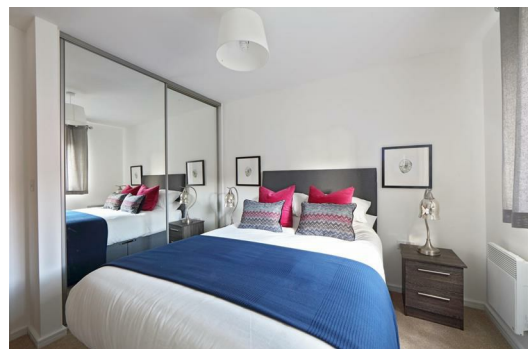
£975 PCM

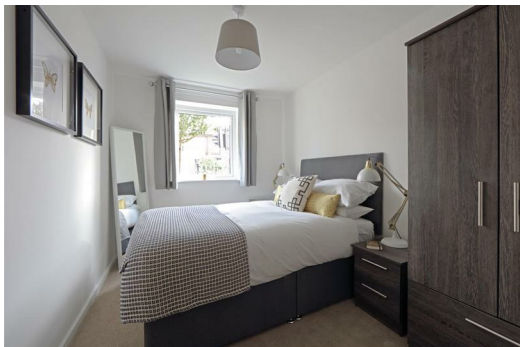
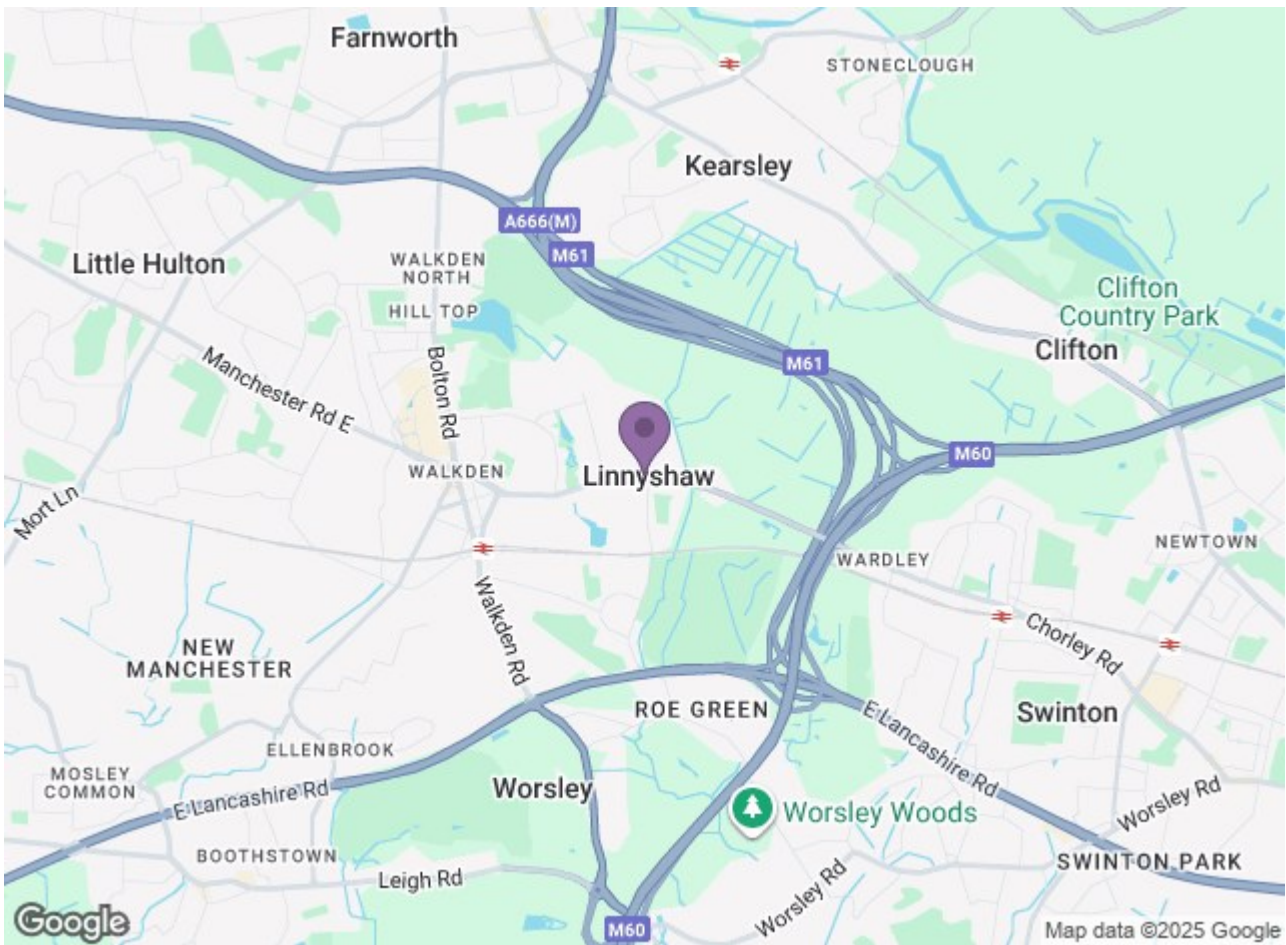
Welcome to Heyfields, located in Walkden, Heyfields is an impressive new development of 66 family homes and 72 apartments, 7 miles from Manchester city centre. Set in a picturesque location and within easy reach of the city centre, this development is ideal for both growing families and young professional couples.

Want something cosy and contemporary? Don't compromise. With our Lincoln apartments, you get a spacious living room, fully kitted out open-plan kitchen and dining area, two beautiful double bedrooms and a family size bathroom with separate bath and shower. Comfortable, and with plenty of up-to-the-minute features and appliances, our Lincoln apartments offer an expansive, homely feel.

Energy efficient, there is quality flooring throughout, and top-notch security means you can enjoy peace of mind as well as comfort.

Deposit: £1120  
Unfurnished  
Council Tax: A  
Available 19th January 2026





Energy Efficiency Rating			Environmental Impact (CO <sub>2</sub> ) Rating		
Rating	Current	Target	Rating	Current	Target
A			A		
B			B		
C			C		
D			D		
E			E		
F			F		
G			G		
77		77	78		78

England & Wales

**Ascend**  
Built on higher standards