

# Ascend

Built on higher standards



## 48 Anderton Drive St Helen's WA9 3QG

- Three bedrooms
- Bathroom, Ensuite and WC
- Driveway parking
- EPC Rating B for 2 vehicles
- Brand New Home!
- Great local amenities

### £1,250 PCM



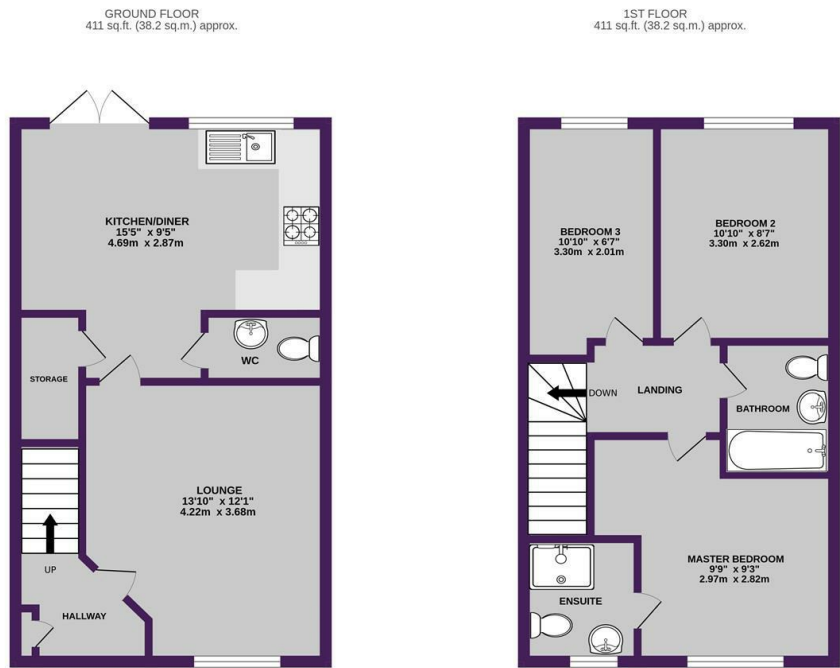
With its modern design, flexible living spaces & sought-after finishes, The Gosford is a 3-bedroom home designed to fit around you.

Upon entering, you'll find the cosy living room right at the front of the home, offering the perfect space to unwind after a busy day. On the way to the kitchen, there's a downstairs WC and handy under-stair storage room, keeping everything neat and tidy. At the rear, the open-plan kitchen & dining area is a social hub, with French doors opening onto the garden, great for entertaining family & friends or enjoying a peaceful morning coffee.

Upstairs, the main bedroom is a private retreat and comes with its own en-suite and fitted wardrobe. There's also a second spacious double bedroom and a versatile single bedroom - perfect as a child's room, home office or guest space. A modern family bathroom completes this well-thought-out home.

In addition, you get a front & rear garden and a private driveway!

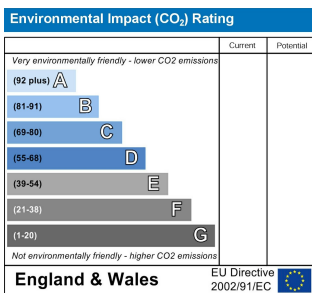
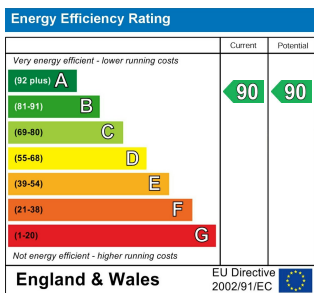
Images and floorplan are demonstrative of this property type. The images and floorplan are therefore not plot or site specific and spec may vary slightly. Properties are let unfurnished



TOTAL FLOOR AREA : 821 sq.ft. (76.3 sq.m.) approx.

Whilst every attempt has been made to ensure the accuracy of the floorplan contained here, measurements of doors, windows, rooms and any other items are approximate and no responsibility is taken for any error, omission or mis-statement. This plan is for illustrative purposes only and should be used as such by any prospective purchaser. The services, systems and appliances shown have not been tested and no guarantee as to their operability or efficiency can be given.

Made with Metropix C2025



**Ascend**  
Built on higher standards

0161 707 7584

192 Monton Road, Monton, Manchester,  
M30 9PY

monton.sales@ascendproperties.com,  
monton.lettings@ascendproperties.com  
www.ascendproperties.com



These particulars, whilst believed to be accurate are set out as a general outline only for guidance and do not constitute any part of an offer or contract. Intending purchasers should not rely on them as statements of representation of fact, but must satisfy themselves by inspection or otherwise as to their accuracy. No person in this firm's employment has the authority to make or give any representation or warranty in respect of the property