

Ascend

Built on higher standards



28 Fox Clump Way Knowsley L35 3AB

- Three bedrooms
- Two bathrooms
- Private driveway
- Available Now!
- Solar Panels
- Semi-rural location
- Downstairs WC
- Rear garden
- Brand New Home
- Electrical vehicle charging point

£1,300 PCM



The Gosford is a well-proportioned 3-bedroom home that blends space, style and smart design, ideal for modern living.

Step into a welcoming entrance foyer, where stairs lead to the first floor. Continue through to the heart of the home and you'll find a bright, front-facing living room, perfect for cosy evenings or relaxed weekend downtime. A central hallway connects the living space to the rear, complete with a handy under-stairs storage cupboard and a convenient downstairs WC.

At the back of the property, a contemporary kitchen and dining area spans the full width of the home. With French doors opening onto the turfed rear garden and patio, it's the ideal spot for entertaining or enjoying a bit of sunshine.

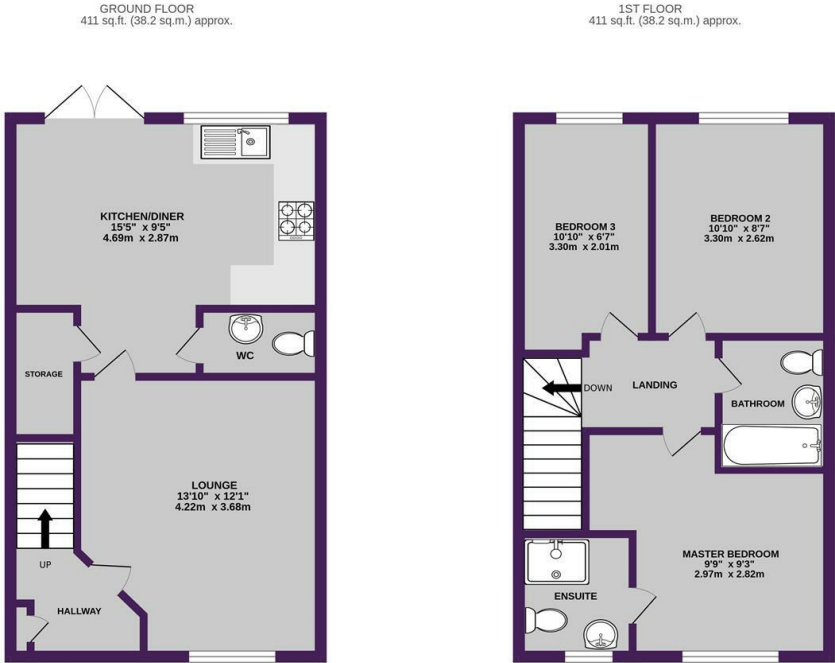
Upstairs, a central landing leads to three well-sized bedrooms. The main bedroom sits at the front and benefits from its own en-suite for that added touch of comfort. A sleek family bathroom sits in the centre, finished with modern white sanitaryware and chrome fittings, while to the rear you'll find a double bedroom and a versatile single room, ideal for a nursery, dressing room or home office.

In addition, you get a front & rear garden and a private driveway!

Fox Wood Garden Village, a brand-new community offering a stylish collection of 3 & 4 bedroom homes to rent in the charming village of Whiston.

Location wise, you can't go wrong! Families will appreciate the excellent choice of nearby schools, including Whiston Willis Primary Academy and Halshead Primary School, both within easy reach. For retail therapy, Cables Retail Park and Liverpool Shopping Park are just a short drive away, offering a great mix of high street brands and everyday essentials. Alder Hey, Broadgreen, St Helen's and Whiston Hospitals are also close by.

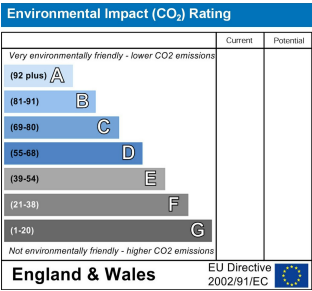
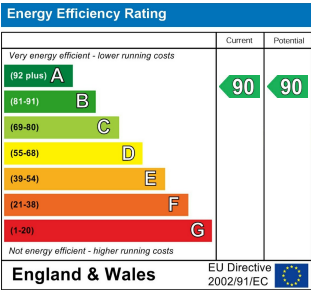
For those commuting, the M62 is nearby and Whiston train station is less than a mile from your door, giving you direct links to Liverpool, Manchester and beyond, perfect for work or weekend plans.



TOTAL FLOOR AREA - 821 sq.ft. (76.3 sq.m.) approx.

Whilst every attempt has been made to ensure the accuracy of the floorplan contained here, measurements of doors, windows, rooms and any other items are approximate and no responsibility is taken for any error, omission or mis-statement. This plan is for illustrative purposes only and should be used as such by any prospective purchaser. The services, systems and appliances shown have not been tested and no guarantee as to their operability or efficiency can be given.

Made with Metropix i2025



Ascend
Built on higher standards

0161 707 7584

192 Monton Road, Monton, Manchester,
M30 9PY

monton.sales@ascendproperties.com,
monton.lettings@ascendproperties.com
www.ascendproperties.com



These particulars, whilst believed to be accurate are set out as a general outline only for guidance and do not constitute any part of an offer or contract. Intending purchasers should not rely on them as statements of representation of fact, but must satisfy themselves by inspection or otherwise as to their accuracy. No person in this firms employment has the authority to make or give any representation or warranty in respect of the property