



Petal Court, Worsley, Manchester

£950 PCM

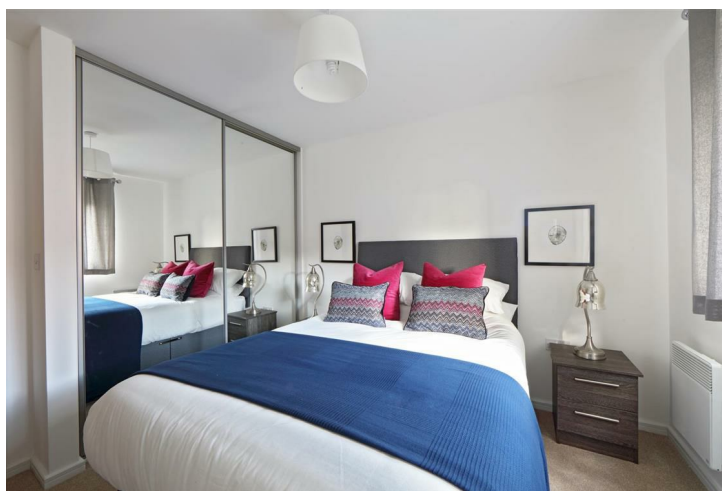
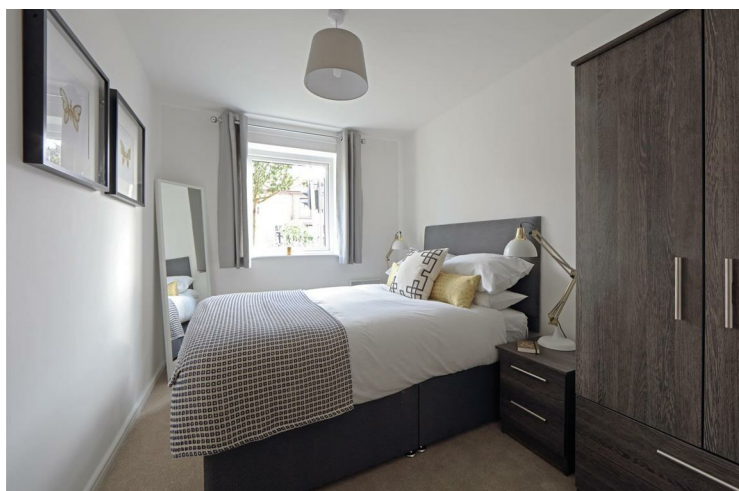
Welcome to Heyfields. Located in Walkden, Heyfields is an impressive new development of 66 family homes and 72 apartments, 7 miles from Manchester city centre. Set in a picturesque location and within easy reach of the city centre, this development is ideal for both growing families and young professional couples.

Elegant by name, elegant by nature, our Washington apartments are spacious, modern and energy efficient. At the heart of this home is the contemporary open-plan kitchen, which merges space with the comfortable living and dining areas. Down the hallway, you have two beautiful double bedrooms and the generously sized bathroom.

Light colour wood and pale interiors throughout add to the spacious feel. Quality flooring and blinds combine with secure-by-design windows and doors, and feature fitted alarm systems for extra peace of mind.

Deposit £1090
Unfurnished
Council Tax A
Available 23rd May 2025





Key Features

- Allocated parking space
- Security alarm system (houses only)
- Dishwasher
- Washing/drying machine
- Light caramel carpet in the bedrooms
- Secure-By-Design windows and doors
- Fitted wardrobes to master bedroom
- Fridge freezer
- Oven and hob
- Cream blinds in the bedrooms

Location

