

Ascend

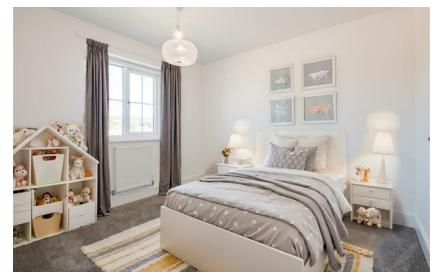
Built on higher standards



6 Fettleers Way Bolton BL6 5UE

- Private driveway
- Security alarm system
- Dishwasher
- Washing/drying machine
- Private back garden
- Fridge freezer
- Oven and hob

£1,450 PCM



Barton Quarter is a fantastic development offering 2 and 3 bedroom build to rent homes, located in the heart of a triangle between Chorley, Wigan Bolton.

The Lymner is the perfect, traditional looking family home, boasting three bedrooms including a large main bedroom with en-suite and a further family bathroom.

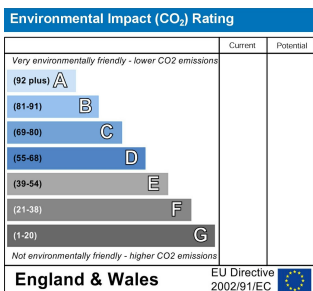
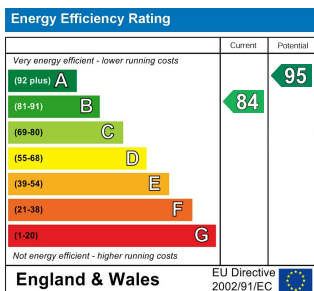
With the front door placed in the middle of the property, either side you will find a large kitchen/dining and a living area, both spanning the full side of the home. The kitchen comes complete with French doors on to your private back garden and a utility. You will also find a handy storage cupboard and WC on the ground floor.

All three local towns are only all six miles away, with Preston and Manchester both under 40 minutes' away via the nearby M61, Barton Quarter also makes the ideal commuter choice – and surrounded by wonderful local countryside, for achieving an enviable work-life balance too.

The new neighbourhood has excellent local shopping and leisure amenities within walking distance. Lots of local shops are available on your doorstep including an independent greengrocers, butchers and banks, Cooperative and Sainsbury's Local branches, pharmacy and post-office. You will also find Aldi and Iceland nearby, with Asda Supercentre and Tesco Extra at the Middlebrook Retail Park.

Access the site by using postcode BL6 5UE.

Deposit £1670
 Unfurnished
 Council Tax TBC
 Available 23rd September 2024



Ascend
 Built on higher standards

0161 707 7584

192 Monton Road, Monton, Manchester, M30 9PY

monton.sales@ascendproperties.com,
 monton.lettings@ascendproperties.com
 www.ascendproperties.com



These particulars, whilst believed to be accurate are set out as a general outline only for guidance and do not constitute any part of an offer or contract. Intending purchasers should not rely on them as statements of representation of fact, but must satisfy themselves by inspection or otherwise as to their accuracy. No person in this firm's employment has the authority to make or give any representation or warranty in respect of the property