

Ascend

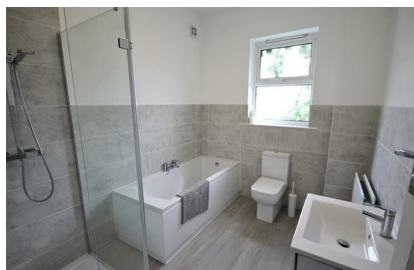
Built on higher standards



45 Renshaw Street Manchester M30 0PQ

- Mid-terrace property
- Two double bedrooms
- Two reception rooms
- Modern fitted kitchen
- Modernised throughout
- Large four piece bathroom suite
- Enclosed rear yard
- Unfurnished
- On street parking available
- Good transport links available

£1,150 PCM



Spacious throughout, this two double-bedroom house certainly ticks a lot of boxes! Situated on a quiet residential street in Eccles with an abundance of parking available, is this large terrace house that has been modernised to a high standard.

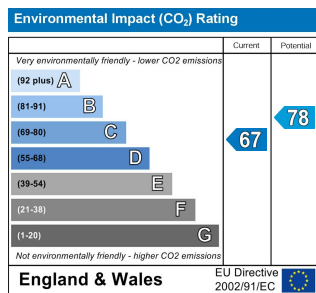
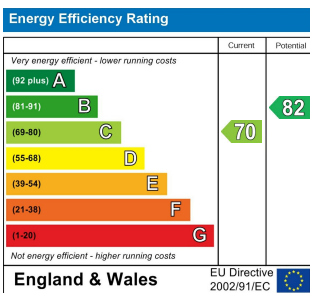
Venture inside and to the ground floor you will find the front living room, with high ceilings, wood effect flooring and a large window allowing a well-lit room for relaxation. The dining room is another spacious, bright room with leads onto the stunning modern kitchen. High gloss tiled floor, lots of worktop space and appliances including integrated oven, gas hob and extractor, washing machine and large fridge freezer are to be found. There is also access to a rear yard for that much needed bit of outside space!

Take a trip upstairs and you're greeted with a huge four-piece bathroom suite, comprising walk-in rainfall effect shower, separate bath, WC and hand basin, all finished with modern tiling throughout. There are also two large double bedrooms, the master taking up the whole width of the house! There is so much high-quality space on offer here what more could you want!

As for location you're close by to major transports links such as train, bus and metrolink making for an easy commute to Manchester City Centre, MediaCityUK and Intu Trafford Centre.

Images are for marketing purposes only.

Available 18th October 2024 Council Tax Band A. 12 month minimum tenancy. Deposit £1380



Ascend
Built on higher standards

0161 707 7584

192 Monton Road, Monton, Manchester, M30 9PY

monton.sales@ascendproperties.com,
monton.lettings@ascendproperties.com
www.ascendproperties.com



These particulars, whilst believed to be accurate are set out as a general outline only for guidance and do not constitute any part of an offer or contract. Intending purchasers should not rely on them as statements of representation of fact, but must satisfy themselves by inspection or otherwise as to their accuracy. No person in this firm's employment has the authority to make or give any representation or warranty in respect of the property