

Ascend

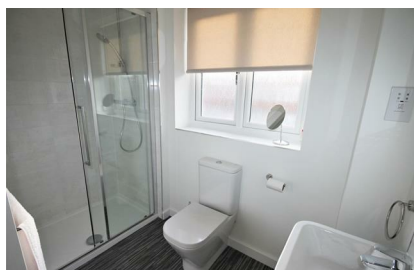
Built on higher standards



17 Marple Gardens Manchester M28 3XS

- 3 bed Detached
- External CCTV included
- Garage and driveway for multiple vehicles
- En-suite to master bedroom
- Alarm system fitted
- Walking distance to Walkden train station
- External window cleaner included monthly
- Gardener included during summer months
- Available 27th August 2024
- Virgin TV and WiFi included

£1,475 PCM



Situated in a quiet residential area of Walkden near Worsley is this superb 3-bedroom detached house. With large rooms, an enclosed private garden and driveway parking for 3-4 cars, it's a great family home that ticks all the boxes.

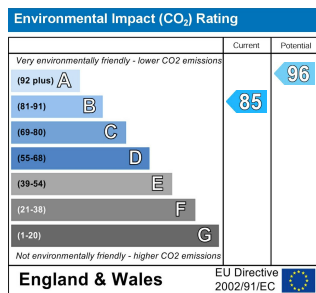
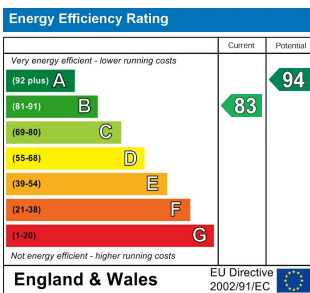
Positioned sideways to the road, the house is pleasantly designed, with a feature front entrance, well maintained side gardens and a driveway to the rear. The garage also makes the ideal storage solution for a car or your possessions. The stunning gardens will always be well kept as the fortnightly gardening service comes included as part of the tenancy during the summer months! The landlord has also included external window cleaning once a month too, and external CCTV within the rent.

Inside this unfurnished property you'll find fresh white interiors for a modern, minimalistic feel. There's also fitted blinds in every room, and an alarm system throughout the house. The kitchen-diner is a great size, while the living room benefits from large windows and a thick carpet. There's a downstairs WC for added convenience.

Upstairs, there's three good sized bedrooms. The master bedroom boasts excellent fitted wardrobes and has its own en-suite with a walk-in shower. All the rooms are carpeted to a high standard. There's also a family bathroom on this floor, complete with a bath unit and overhead shower.

Based on this newly built housing development, you'll be surrounded by beautiful homes as well as being able to enjoy the peace and quiet. Walkden town centre is just a few moments away, where you can find a large Tesco supermarket and shopping centre, and the train station is even closer. This runs direct links to Manchester, Bolton and beyond. Close to the East Lancs main road, this house is perfectly located for simplistic car journeys and easy drives to work. Did we mention that even pets would be considered?

Available 27th August 2024. 12 month tenancy. Council Tax Band D. Deposit £1,700.



Ascend
Built on higher standards

0161 707 7584

192 Monton Road, Monton, Manchester, M30 9PY

monton.sales@ascendproperties.com,
monton.lettings@ascendproperties.com
www.ascendproperties.com



These particulars, whilst believed to be accurate are set out as a general outline only for guidance and do not constitute any part of an offer or contract. Intending purchasers should not rely on them as statements of representation of fact, but must satisfy themselves by inspection or otherwise as to their accuracy. No person in this firm's employment has the authority to make or give any representation or warranty in respect of the property