

CARDIFF'S HOME FOR
STYLISH SALES
& LETTINGS

JeffreyRoss






COMMERCIAL STREET





COMMERCIAL STREET

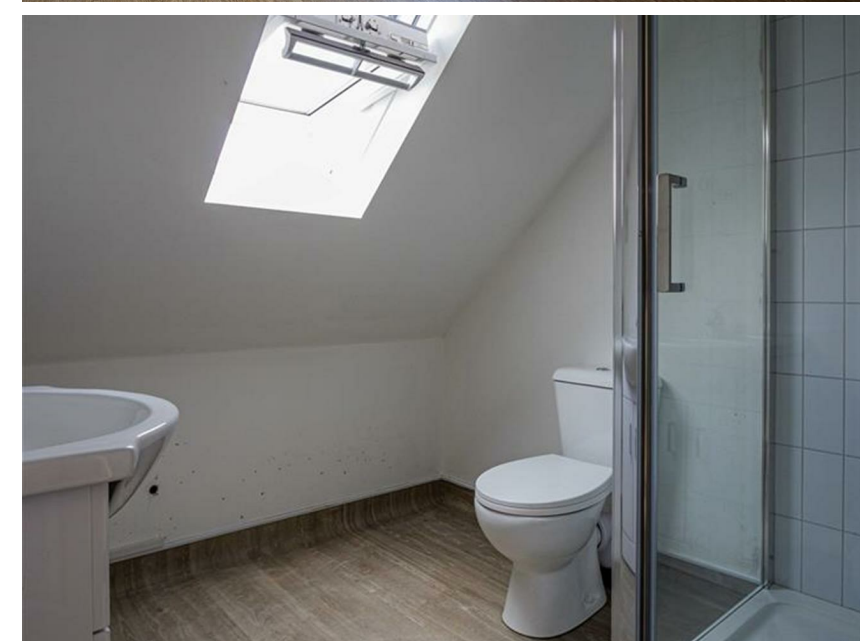
, NP20 1LQ - £725 PCM

 1 Bedroom(s)  1 Bathroom(s)  543.00 sq ft

JeffreyRoss / Brinsons are delighted to offer this BRAND NEW selection of apartments in the heart of Newport City Centre. Located on Commercial Street, just off Friars Walk, the development is a fantastic selection of 4 x one bedroom apartments. Flat 2 is a spacious one bedroom flat that is on the first-floor and is split over two levels with open-plan lounge/kitchen to the first-level and large bedroom with ensuite on the first-floor. The property is available unfurnished (but with white goods provided) and would be a great option for single professional or couple looking to be in the heart of the UK's fastest growing City!

COUNCIL TAX BAND of TBC
EPC RATING of C

A holding fee of one weeks' rent will be payable to secure the dwelling. This will be deducted from the final balance payable upon moving into the dwelling, subject to a successful application. Jeffrey Ross Limited reserves the right to retain this payment should the applicant have provided false or misleading information at the time of applying for the dwelling or failed to take reasonable steps to enter into the Standard Occupation Contract.



PROPERTY SPECIALIST

Jon Hooper-Nash
jon@jeffreycross.co.uk
Director



Commercial Street, Newport



Total Area: 50.5 m² ... 543 ft²

All measurements are approximate and for display purposes only

Energy Efficiency Rating		
	Current	Potential
<i>Very energy efficient - lower running costs</i>		
(92 plus) A		
(81-91) B		
(69-80) C	73	73
(55-68) D		
(39-54) E		
(21-38) F		
(1-20) G		
<i>Not energy efficient - higher running costs</i>		
England & Wales	EU Directive 2002/91/EC 