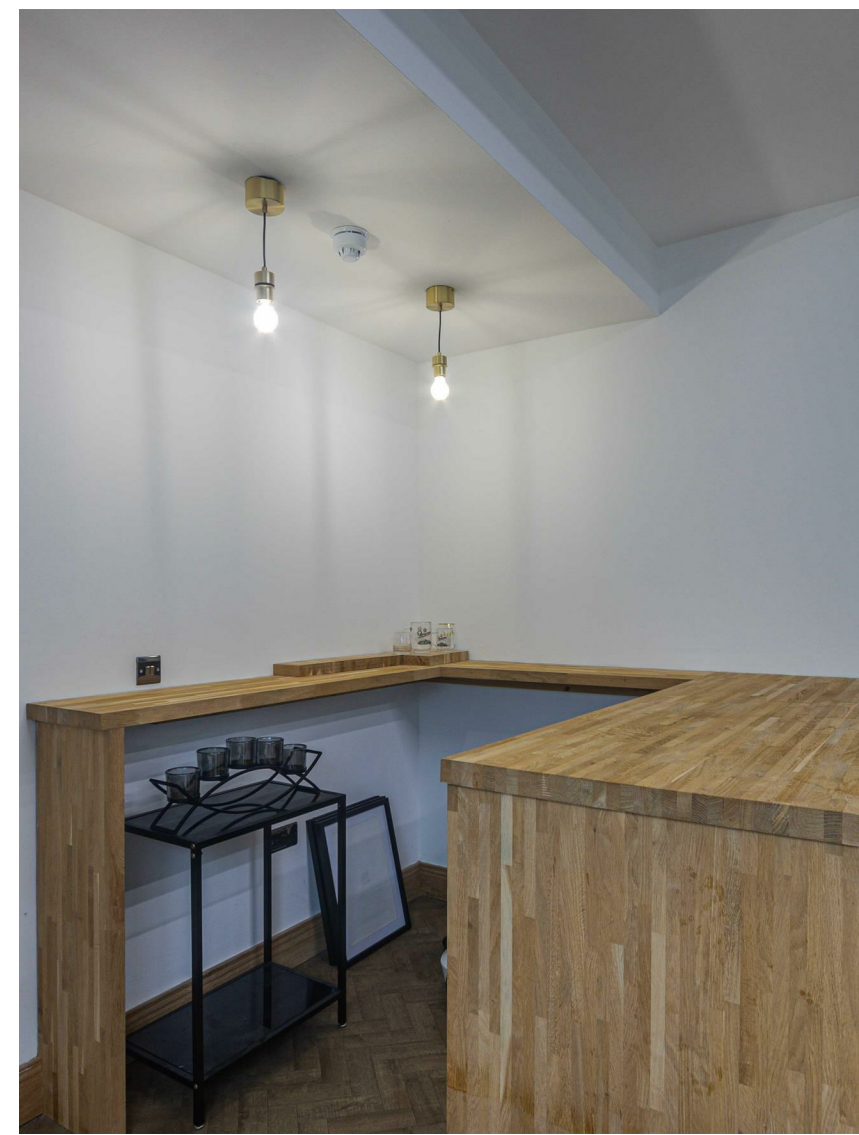


CARDIFF'S HOME FOR  
STYLISH SALES  
& LETTINGS

JeffreyRoss

NEWPORT ROAD  
RUMNEY










## NEWPORT ROAD

RUMNEY, CF3 4LH - £600 PCM

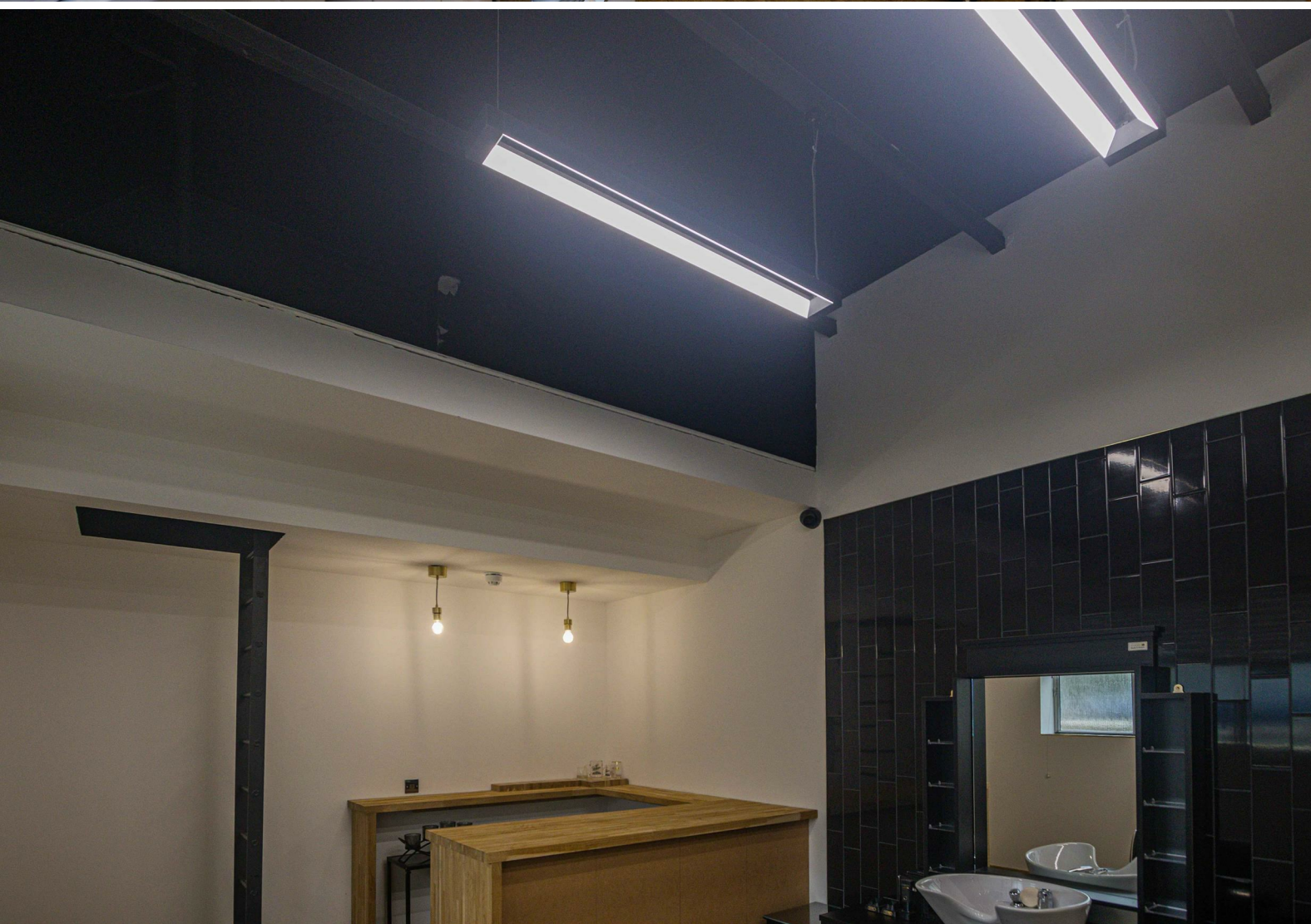
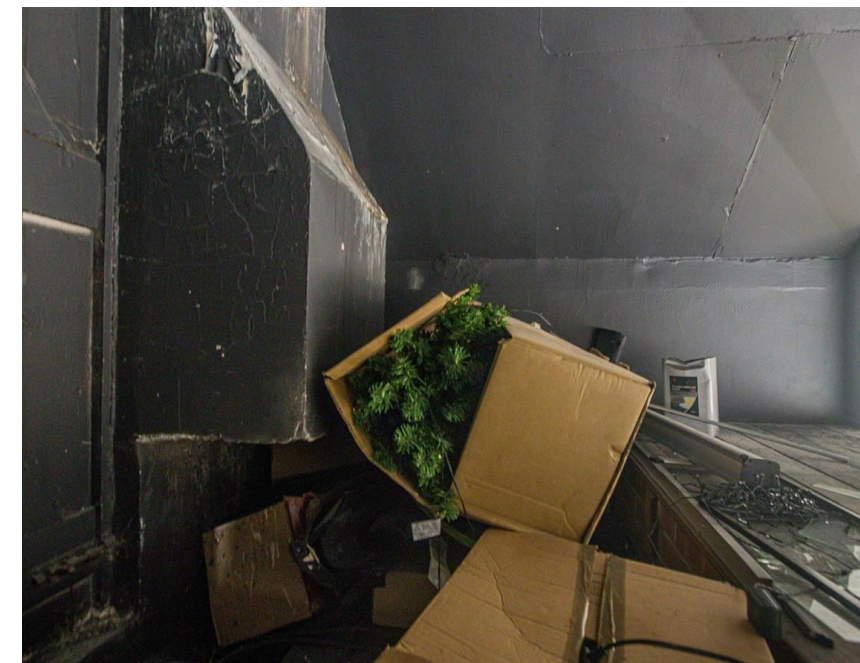
 0 Bedroom(s)  1 Bathroom(s)  328.00 sq ft

JeffreyRoss are delighted to offer this spacious commercial unit for rent in the popular retail area of Newport Road, opposite Llanrumney Avenue and the bustling retail areas in Rumney. The unit is situated to the rear of 828 Newport Road and is accessed via rear lane. Internally the property offers good space with additional storage area, accessed via open ladders. The property is very well-presented and versatile to cater for the needs of a host of different business types.

Lease lengths and terms are flexible.

Please call Jon for more information on 02920499680.

Please note, administration fees may apply, please enquire within for more information.

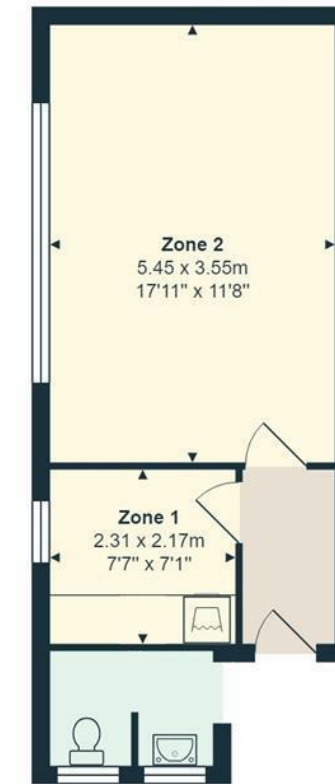


### PROPERTY SPECIALIST

Jon Hooper-Nash  
jon@jeffreygross.co.uk  
Director



## 828 Newport Road (Annex)



Total Area: 30.5 m<sup>2</sup> ... 328 ft<sup>2</sup>

All measurements are approximate and for display purposes only

Energy Efficiency Rating		
	Current	Potential
<i>Very energy efficient - lower running costs</i>		
(92 plus) <b>A</b>		
(81-91) <b>B</b>		
(69-80) <b>C</b>		
(55-68) <b>D</b>		
(39-54) <b>E</b>		
(21-38) <b>F</b>		
(1-20) <b>G</b>		
<i>Not energy efficient - higher running costs</i>		
<b>England &amp; Wales</b>	EU Directive 2002/91/EC	