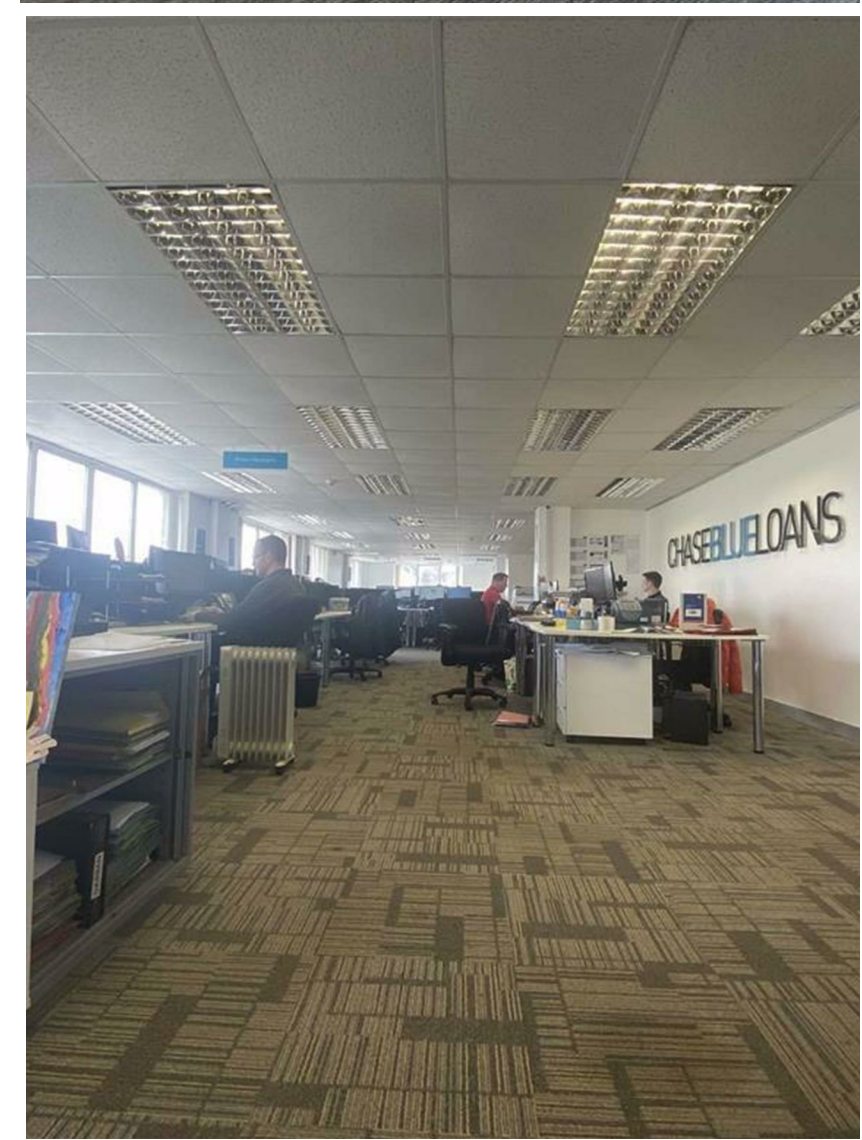
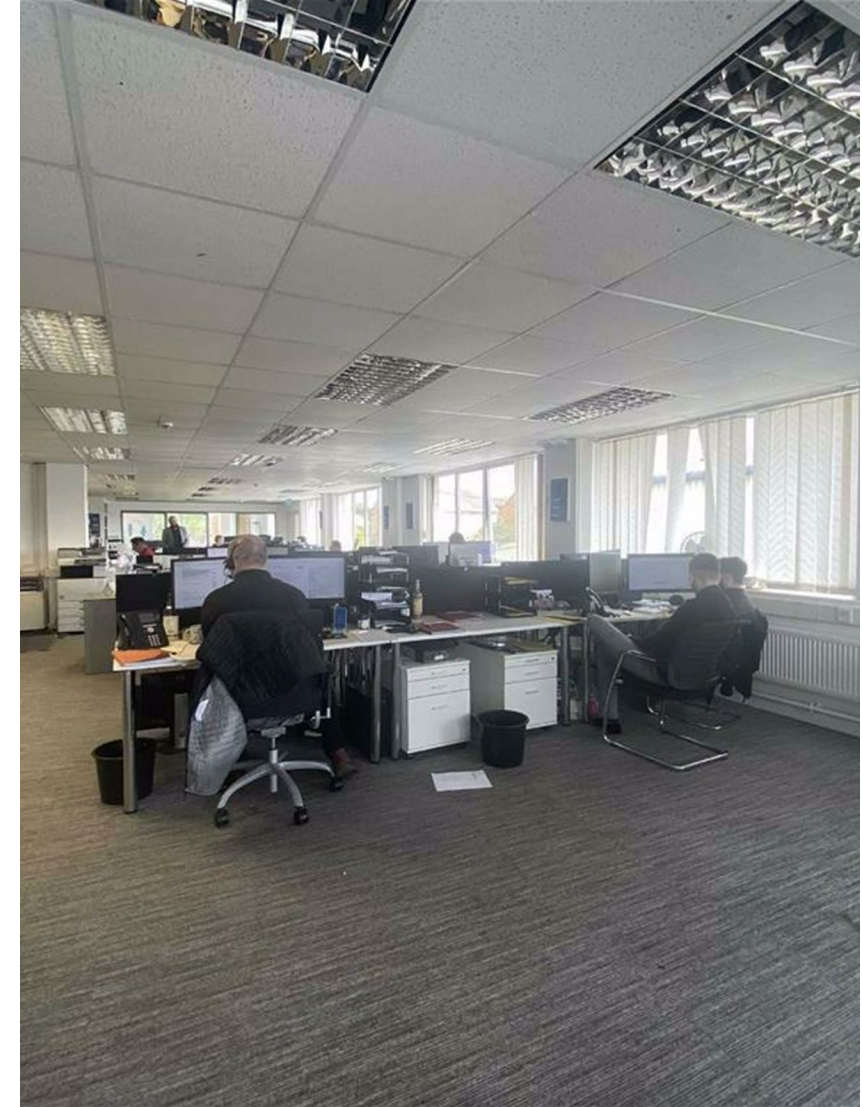


CARDIFF'S HOME FOR  
STYLISH SALES  
& LETTINGS

JeffreyRoss






PALMERSVALE BUSINESS  
CENTRE





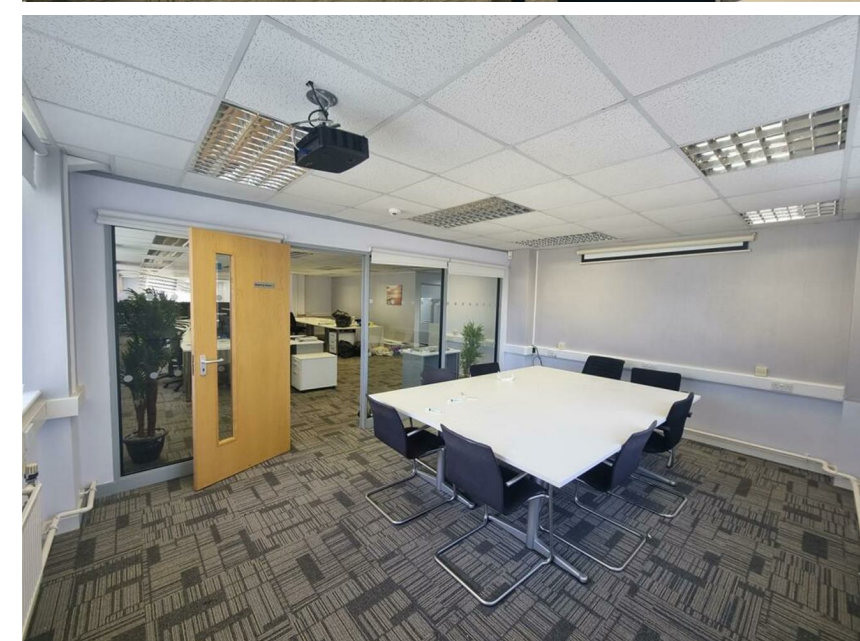
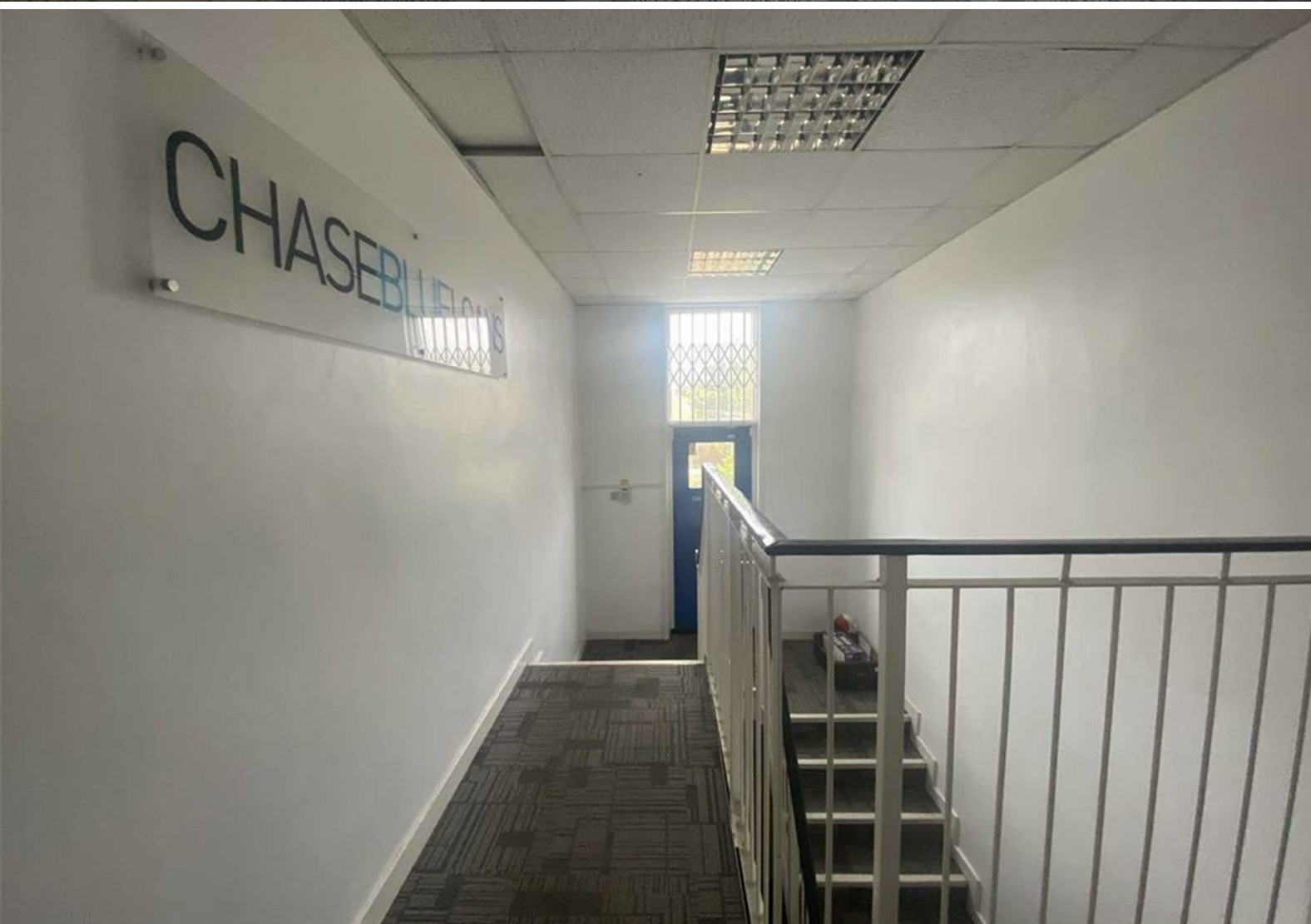
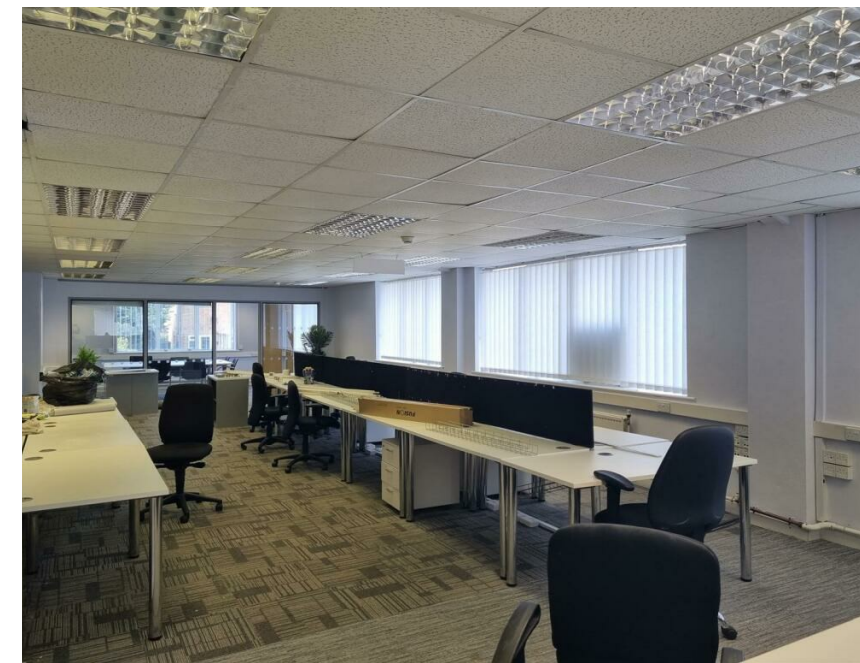
## PALMERSVALE BUSINESS , CF63 2XA - £16,000 PER ANNUM

 0 Bedroom(s)  0 Bathroom(s)  4000.00 sq ft

NEWLY REFURBISHED... An opportunity to lease this fully furnished, modern, up to date offices situated on Palmersvale Business Centre, with parking facilities.

Suite comprising; main office area, three private offices, board room, kitchen area and rest room. Total floor area approximately: 4,000 sq. ft. In easy access to Penarth, Sully, Cardiff and approximately 10 minutes to Culverhouse Cross leading to junction 33 to M4.

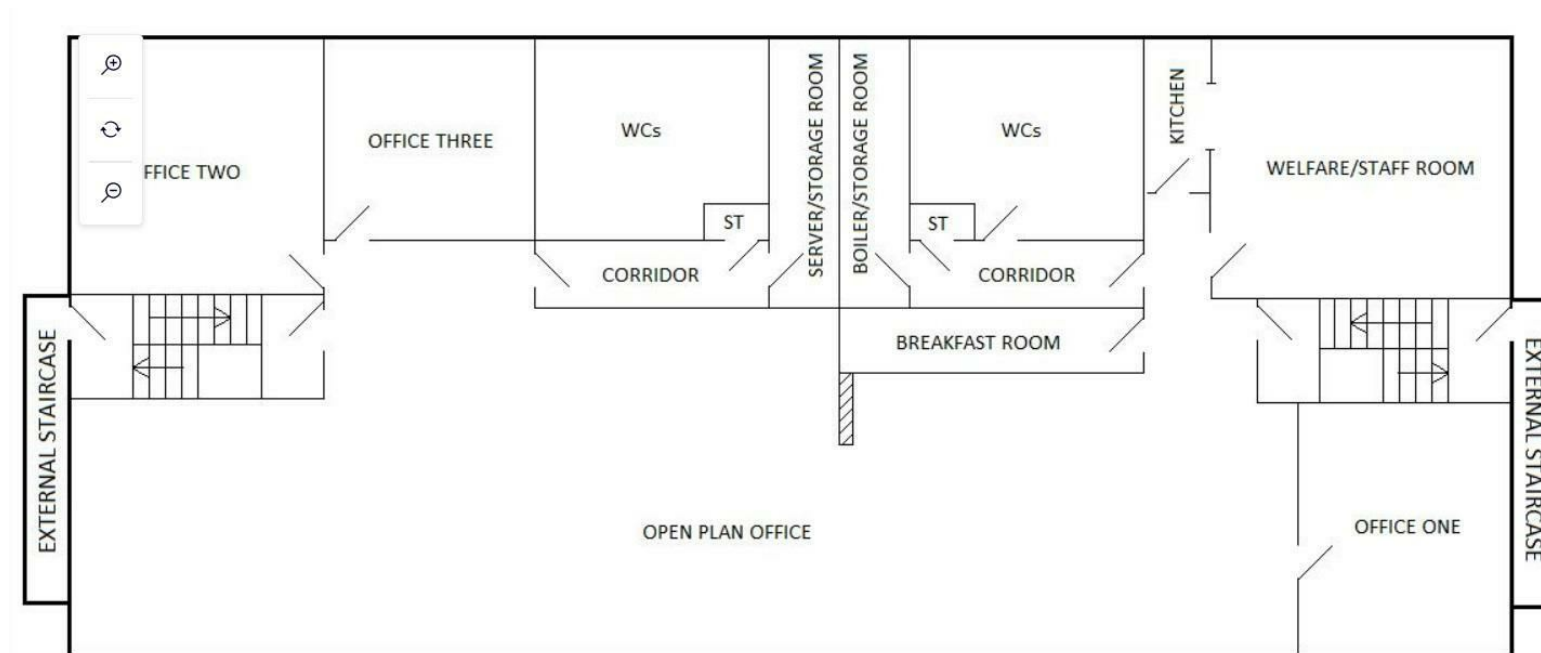
Flexibility on rent and term.



### PROPERTY SPECIALIST

Jon Hooper-Nash  
jon@jeffreygross.co.uk  
Director





Energy Efficiency Rating		
	Current	Potential
<i>Very energy efficient - lower running costs</i>		
(92 plus) <b>A</b>		
(81-91) <b>B</b>		
(69-80) <b>C</b>		
(55-68) <b>D</b>		
(39-54) <b>E</b>		
(21-38) <b>F</b>		
(1-20) <b>G</b>		
<i>Not energy efficient - higher running costs</i>		
<b>England &amp; Wales</b>	EU Directive 2002/91/EC	