

CARDIFF'S HOME FOR
STYLISH SALES
& LETTINGS

JeffreyRoss



CONNAUGHT ROAD

CONNAUGHT ROAD

, CF24 3PU - £900 PCM PCM

2 bedroom(s) 1 bathroom(s) sq ft

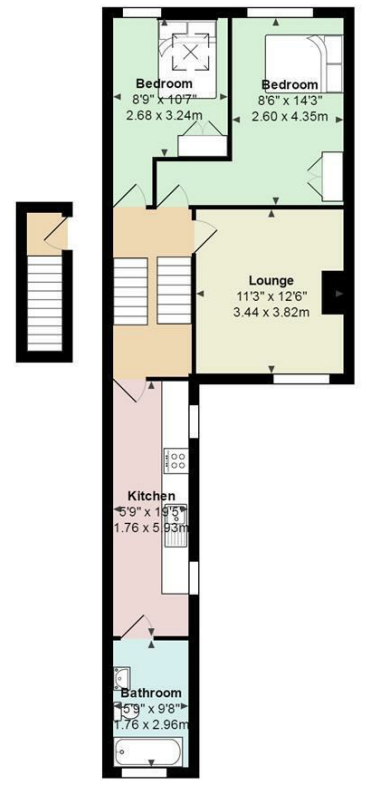
A large top floor, 2 bedroom apartment situated in this central location. The open plan accommodation comprises of large lounge, separate fitted kitchen, bathroom with shower and two good-sized double bedrooms. The property is available unfurnished. Street parking.

EPC Rating C
Council Tax Band B

A holding fee of one weeks' rent will be payable to secure the dwelling. This will be deducted from the final balance payable upon moving into the dwelling, subject to a successful application. Jeffrey Ross Limited reserves the right to retain this payment should the applicant have provided false or misleading information at the time of applying for the dwelling or failed to take reasonable steps to enter into the Standard Occupation Contract.



Energy Efficiency Rating		
	Current	Potential
<i>Very energy efficient - lower running costs</i>		
(92 plus) A		
(81-91) B		
(69-80) C		
(55-68) D		
(39-54) E		
(21-38) F		
(1-20) G		
<i>Not energy efficient - higher running costs</i>		
England & Wales	EU Directive 2002/91/EC	



PROPERTY SPECIALIST
 Ms Jodie Price
 jodie.price@jeffreycross.co.uk