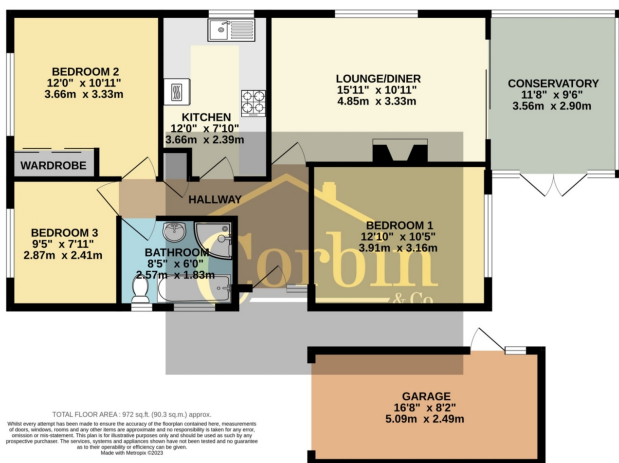




GROUND FLOOR  
972 sq.ft. (90.3 sq.m.) approx.



## 7 Millhams Close, Bournemouth, Dorset

\* CUL-DE-SAC LOCATION \* FLAT WALKING DISTANCE TO KINSON HIGH STREET, AMENITIES, LEISURE CENTRE & RIVERSIDE WALKS \* EXTENSIVE OFF ROAD PARKING & GARAGE \* THREE BEDROOMS \* DUAL ASPECT LOUNGE/DINER \* CONSERVATORY \* ENCLOSED REAR GARDEN \*

3 Bedroom(s) - 1 Reception Room(s) - 1 Bathroom(s)

Council Tax Band: D - Tenure: Freehold - EPC Rating: D

**£375,000**

