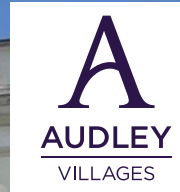


# 28 Inglewood House

Two bedroom apartment

Guide Price £580,000  
(other fees apply)

*It can only be Audley.*



Favourably positioned on the front of Inglewood House, this two-bedroom first floor apartment enjoys beautiful views towards open countryside and provides well-proportioned living space that includes a 25ft living/dining room. Furthermore, there is a modern Siematic kitchen with integrated appliances, an en suite shower room and built in wardrobes to the main bedroom, plus a separate bathroom.

Property specifications:

- Prime position on the front of Inglewood House
- Sizeable living/dining room with countryside views and Juliet balcony
- SieMatic kitchen with integrated appliances including fridge freezer, dishwasher, oven, hob, microwave oven, and a washer dryer
- En suite shower room in the main bedroom and separate bathroom
- Close to main house and Audley club facilities
- Lift access

### Fees

Monthly management fee £1013.73

Annual ground rent £250

Bistro credit: £77.96

Council Tax Band: F (West Berkshire)

Leasehold

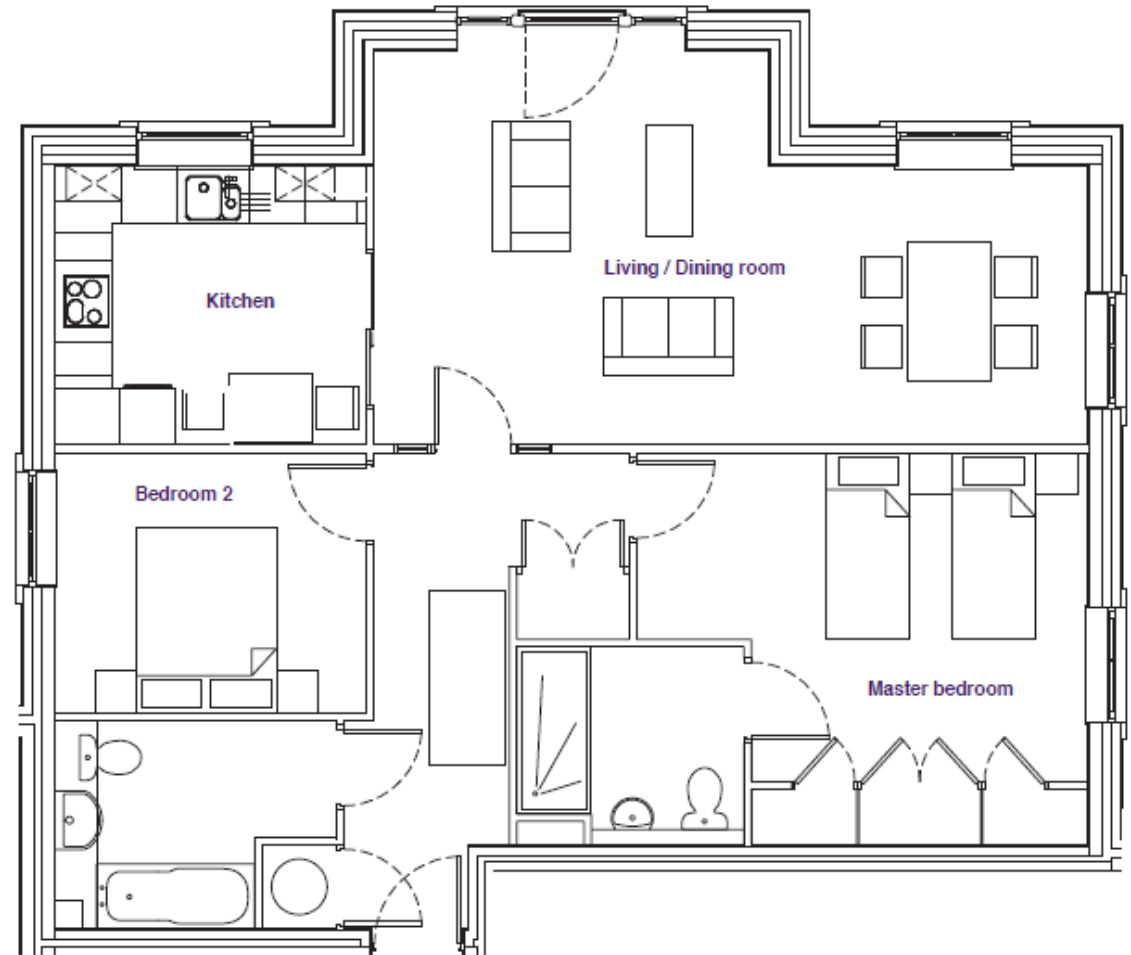
A deferred management charge applies to this property, please ask the sales team for more information.

Viewing by appointment with the sales office.

01488 682 100

[inglewoodsales@audleyvillages.co.uk](mailto:inglewoodsales@audleyvillages.co.uk)





Internal Measurements	Metric (m)	Imperial (ft)
Living room / Dining room	7.70 X 4.25	25'3" x 13'11"
Kitchen	3.35 X 3	11' x 9'10"
Main Bedroom	4.85 X 4.20	15'11" x 13'9"
Bedroom two	3.35 X 2.80	11' x 9'2"

Built in wardrobes in bedrooms have not been included in the overall dimensions. Maximum measurements shown.

Furniture shown to illustrate possible room layouts and not included in sale.

Score	Energy rating	Current	Potential
92+	A		
81-91	B	85   B	85   B
69-80	C		
55-68	D		
39-54	E		
21-38	F		
1-20	G		

