



West of 

## Chapter House

Chudleigh

Offers In the region of £525,000



# Chapter House

Chudleigh O.I.R.O. £525,000

For the discerning equestrian, Chapter House is a dream home with private paddock, stables, and direct access to scenic hacking routes including woodland trails, and Haldon Forest creating a rider's paradise. This stunning property is set in a magnificent converted convent, it blends historic grandeur—soaring ceilings, exposed timbers, arched windows—with modern comfort. Spread over three graceful floors, this rural retreat offers peace

Substantial period property dating back to 1887 | Arranged over three floors with spacious accommodation | Rich in period features – exposed beams, high ceilings & arch windows | Extensive gardens, stables & paddock – approx. 1.44 acres | Ample parking | Idyllic countryside setting | Close to Chudleigh village amenities and excellent road links |

## PROPERTY DESCRIPTION

Step into a piece of history with this substantial and striking period residence, formerly part of a 19th-century convent dating back to 1887. Set within the distinguished Chapter House – a beautiful conversion of a former convent now thoughtfully divided into six individual homes – this impressive property offers generous and well-balanced living accommodation arranged over three floors.

The property features; a wonderful bright double aspect





kitchen/dining/family room providing ample space for cooking and dining, with modern fitted kitchen offering a good range of storage and granite work surfaces, plus integrated appliances. In addition is a large matching central breakfast bar area with further storage under, plus there is additional space for a dining table and chairs or sofa. Also on the ground floor is the cloakroom and third bedroom which benefits from a shower enclosure. On the first floor is a beautiful light and airy triple aspect living room with large windows and high ceiling offering views over the surrounding grounds, plus a fitted wood burning stove. Also on the first floor is a spacious dining room which could also be a fourth bedroom. The second floor are two further double bedrooms and a large family bathroom.

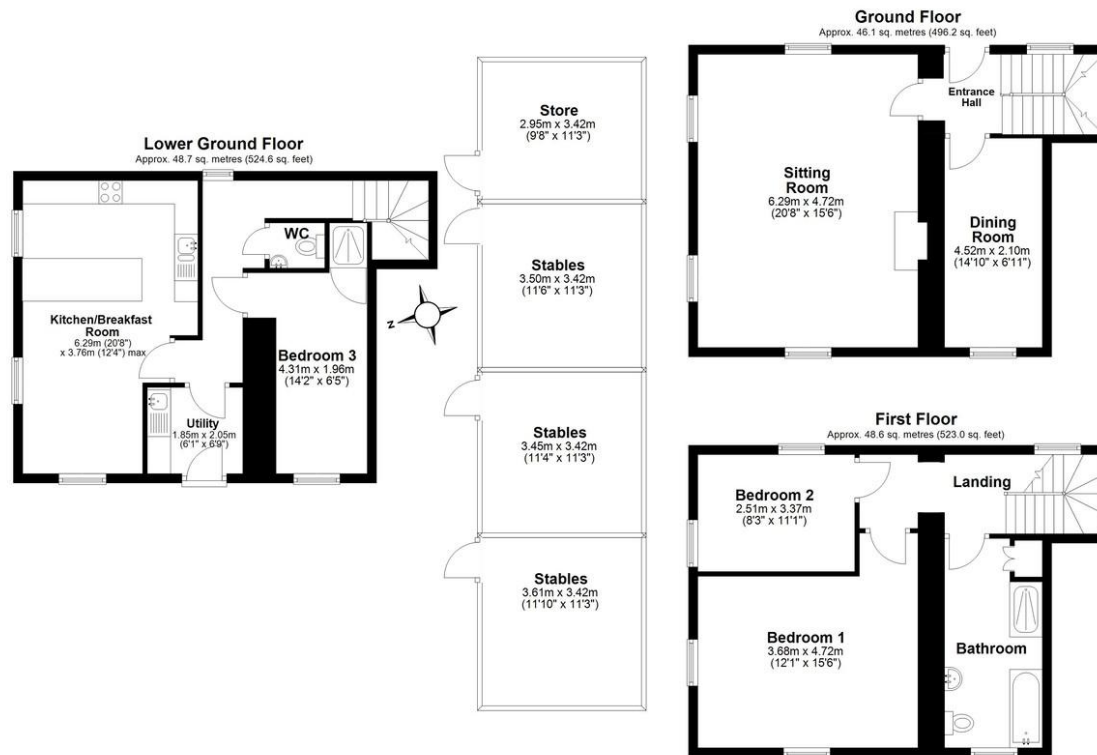
Brimming with charm and original features, the home showcases a wealth of character throughout, including exposed beams, soaring high ceilings, and elegant arch-top windows that flood the interior with natural light. Each room exudes a sense of space and heritage, making this an exceptional opportunity for those seeking a truly special home.

This is a rare chance to own a remarkable period home with both character and land in a sought-after location.

### GARDENS AND GROUNDS

The property enjoys extensive grounds, gardens, and stables, totalling approximately 1.44 acres. Whether you're enjoying the tranquility of the countryside or entertaining guests outdoors, the setting is as





Total area: approx. 143.4 sq. metres (1543.7 sq. feet)



Energy Efficiency Rating		
	Current	Potential
Very energy efficient - lower running costs		
(92+) <b>A</b>		
(81-91) <b>B</b>		81
(69-80) <b>C</b>		
(55-68) <b>D</b>		

Agents Note: Whilst every care has been taken in the preparation of these sales particulars, they are for general guidance only. All measurements, descriptions and other details are approximate and should not be relied upon as statements of fact. Prospective purchasers must satisfy themselves, as to the accuracy of the information by inspection, measurement or otherwise. If inadvertently omitted or inaccurate details come to light after distribution, East and West of Exe reserves the right to withdraw, amend and reissue this brochure without notice or liability for any financial loss prior to exchange of contracts. East and West of Exe has no authority to make legal representations or warranties in relation to the property, including but not limited to boundaries, environmental matters, planning, building regulations and title matters, and cannot enter into any contract on behalf of the Vendor. All offers are subject to contract and the Vendor reserves the right to refuse any offer without giving reason. We do not accept responsibility for any expenses incurred by prospective purchasers at any stage of the transaction, in relation to properties that have been sold, let, or withdrawn. These particulars are prepared in accordance with the Consumer Protection from Unfair Trading Regulations (2008) and the Business Protection from Misleading Marketing Regulations (2008). Any material information known to the agent has been disclosed; however, buyers must make their own enquiries to confirm any details that are material to their purchasing decision.



**EXETER OFFICE**  
18 Southernhay West Exeter EX1 1PJ  
Tel: 01392 833999  
enquiries@eastofexe.co.uk  
www.eastofexe.co.uk

**EAST DEVON OFFICE**  
61 Fore Street Topsham Exeter EX3 0HL  
Tel: 01392 345070  
enquiries@eastofexe.co.uk  
www.eastofexe.co.uk

**WEST OF EXE OFFICE**  
Main Road Exminster EX6 8DB  
Tel: 01392 833999  
enquiries@westofexe.co.uk  
www.westofexe.co.uk

Registered in England no. 07121967