



FINE & COUNTRY
Kingswood

Tudor House
Warren Drive, Kingswood, Surrey KT20 6PT

Property at a glance

- Located On The Highly Desirable 'The Warren'
- Six Bedrooms
- Five Bath/Shower Rooms
- Fabulous Open-Plan Kitchen/Dining/Family Room
- Superb Sliding Floor To Ceiling Patio Doors To The Rear Garden & Electric Awnings
- Sitting Room & Living Room
- Snug, Utility Room & Cloakroom
- Dressing Room To Principle Bedroom
- Secluded, Southerly Facing 0.6 Acre Plot & Large Gated Driveway
- No Onward Chain

Setting

The property is situated on Warren Drive, in the heart of Kingswood village which provides a comprehensive parade of local shops and restaurants, including a convenience store/post office, Londis, Coughlans bakery, hairdressers, beauticians and The Kingswood Arms public house. Locally there is a wide choice of state and independent schools.

In terms of transportation, Kingswood Station is within easy walking distance and provides services into London of approximately 45 minutes. The M25 is accessed via Junction 8, 1.7 miles to the south providing connections to the wider motorway network, whilst for the frequent flyer both Gatwick and Heathrow airports are within reach.

For golfers, there are four world-renowned golf clubs, Kingswood Golf and Country club, Surrey Downs, Walton Heath and the RAC golf club all close by. Horse Riding schools and stabling can be found in Kingswood, Chipstead, Tadworth and Walton on the Hill.

£2,250,000 Freehold

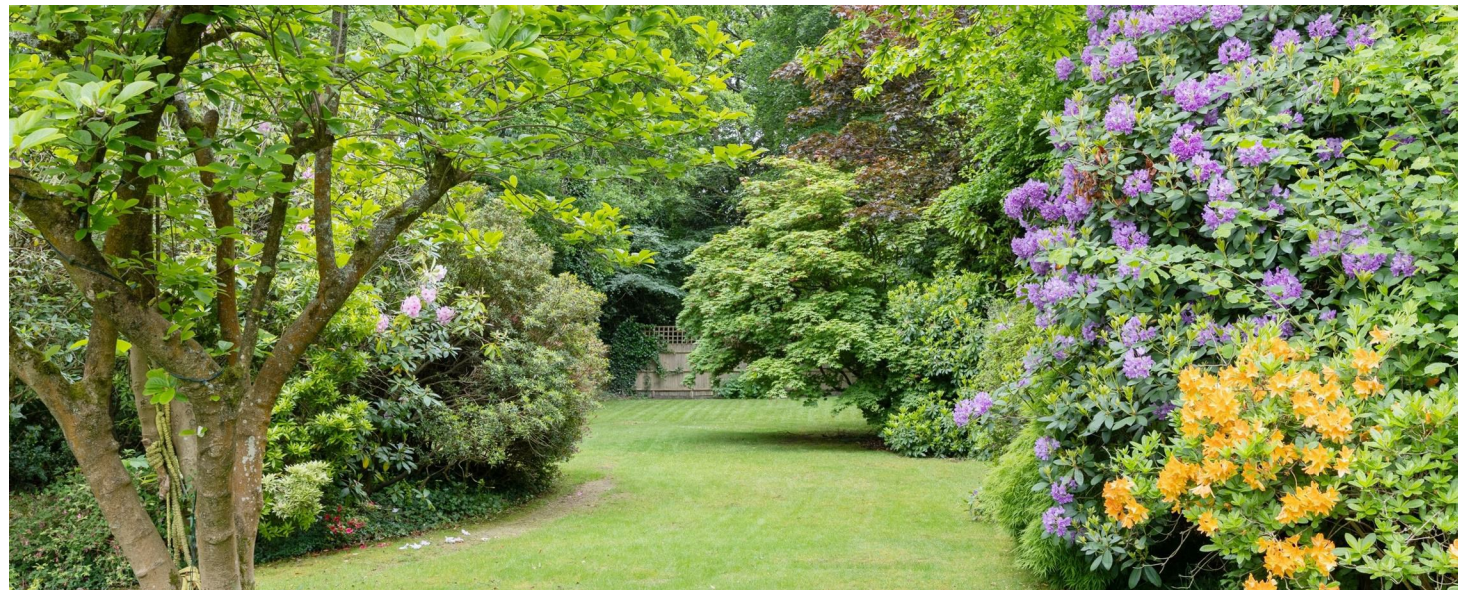
Tudor House

Situated in a highly desirable location on Warren Drive, is this fabulous six bedroom family home located on a secluded, Southerly facing plot measuring 0.6 acre. The current owners have refurbished and extended the property over the last few years and created an amazing open-plan kitchen/dining/family room measuring 47'11" x 40', fitted with a Tom Howley kitchen with a large central island, a roof lantern with electric blind, floor to ceiling sliding patio doors that open to two sides of the room all with electric blinds, and create a great flow with the sun terrace that wraps around the two sides. For warmer days or rainy afternoons, there are two electric awnings that will shade the terrace.

A spacious entrance hall with bespoke staircase, welcomes you in to the home, with a large cloaks cupboard. To the ground floor, there is a double aspect sitting room with a feature fireplace, a large living room with access to a modern shower room, which would be ideal for multi generational living. In addition, there is a snug, a utility room and a separate cloakroom. Superb tiled flooring is laid throughout the ground floor, with wood flooring to the sitting room, a cosy room to retire to, in the winter months.

On the first floor there are six bedrooms, a luxury ensuite bath/shower room and dressing room to the principle bedroom, two further bedrooms with ensembles, a separate luxury family bathroom with separate shower.

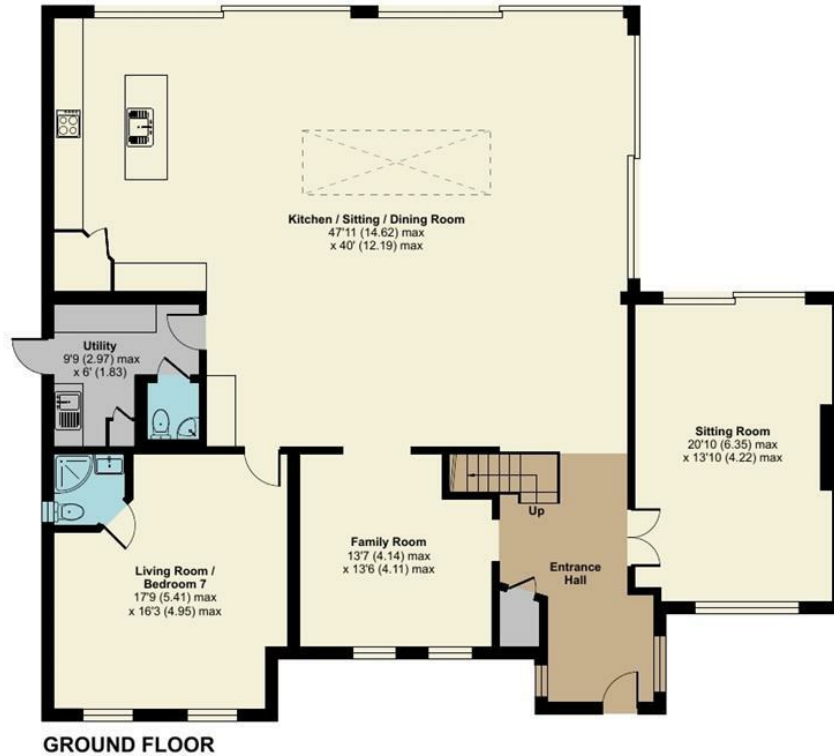
The beautifully landscaped Southerly facing gardens and grounds feature a large entertaining terrace, ideal for Al Fresco dining and a generous/level area of lawn. There are a number of beautiful trees, particularly two Acers which are a vibrant shade of red in the Autumn months. To the front, is a large gated driveway providing ample parking. The property offers no onward chain.



Warren Drive, Kingswood, Tadworth, KT20

Approximate Area = 3462 sq ft / 321.6 sq m

For identification only - Not to scale

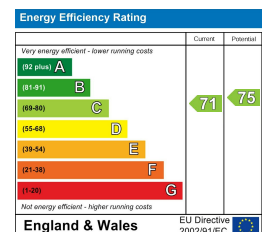


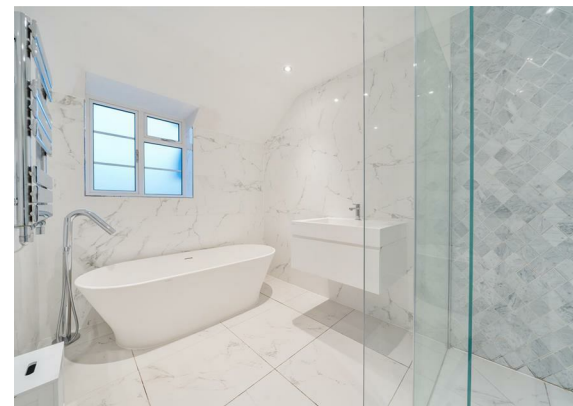
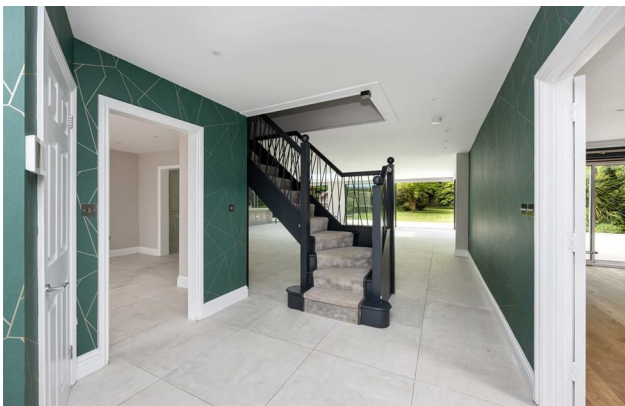
Floor plan produced in accordance with RICS Property Measurement Standards incorporating International Property Measurement Standards (IPMS2 Residential). © nichecom 2024. Produced for Fine & Country. REF: 1206624

All measurements are approximate and quoted in metric with imperial equivalents and for general guidance only and whilst every attempt has been made to ensure accuracy, they must not be relied on. The fixtures, fittings and appliances referred to have not been tested and therefore no guarantee can be given and that they are in working order. Internal photographs are reproduced for general information and it must not be inferred that any item shown is included with the property.

For a free valuation, contact the numbers listed on the brochure.

Viewings strictly via the vendors agents Fine & Country on 01737 361014.





Fine & Country The Estate Office, Kingswood, Surrey, KT20 6HS
 Tel: +44 (0)1737 361014
 Email: kingswood@fineandcountry.com
 Web: kingswood.fineandcountry.co.uk
 Fine & Country Sales, Lettings, Land & New Homes

FINE & COUNTRY
 Kingswood