



# 14E EGLINTON GARDENS

SKELMORLIE

[www.corumproperty.co.uk](http://www.corumproperty.co.uk)







#### 4 | BEDROOMS

#### 2 | BATHROOMS

#### 3 | PUBLIC ROOMS

**The views over the Firth of Clyde from this stunning apartment are just fabulous, not only this, the apartment forms part of a former mansionhouse in the desirable village of Skelmorlie. There is flexible and really good sized accommodation in this first floor property along with private garden & terrace.**

14E Eglinton Gardens is a stunning apartment which forms part of a former Mansionhouse which dates back to the 1890's on the shorefront village of Skelmorlie. The property is located in upper Skelmorlie which has many local amenities. The estuary views from the first floor property are quite lovely and the private gardens are to the front of the building along with the large mature communal grounds.

The flexible and good sized accommodation extends to a bright welcoming reception hallway which could be easily utilised as a fabulous dining space, lounge with feature cornice, bay window, fireplace and beautiful views, modern dining kitchen with a feature turreted area ideal for a coffee and admiring the views to the Firth of Clyde, master bedroom which is a large room with a four piece ensuite bathroom of which both rooms provide estuary views, three further bedrooms, bedroom four is easily utilised as a study/office if required. To further complement the property there are the wc and modern bathroom. The property has gas central heating and partial double glazing. There are fantastic private garden grounds on a lovely terrace with a feature patio, the communal grounds are mature and a great size. There is enclosed residents parking and the apartment has two spaces. Early viewing is highly recommended to appreciate the accommodation and location on offer.

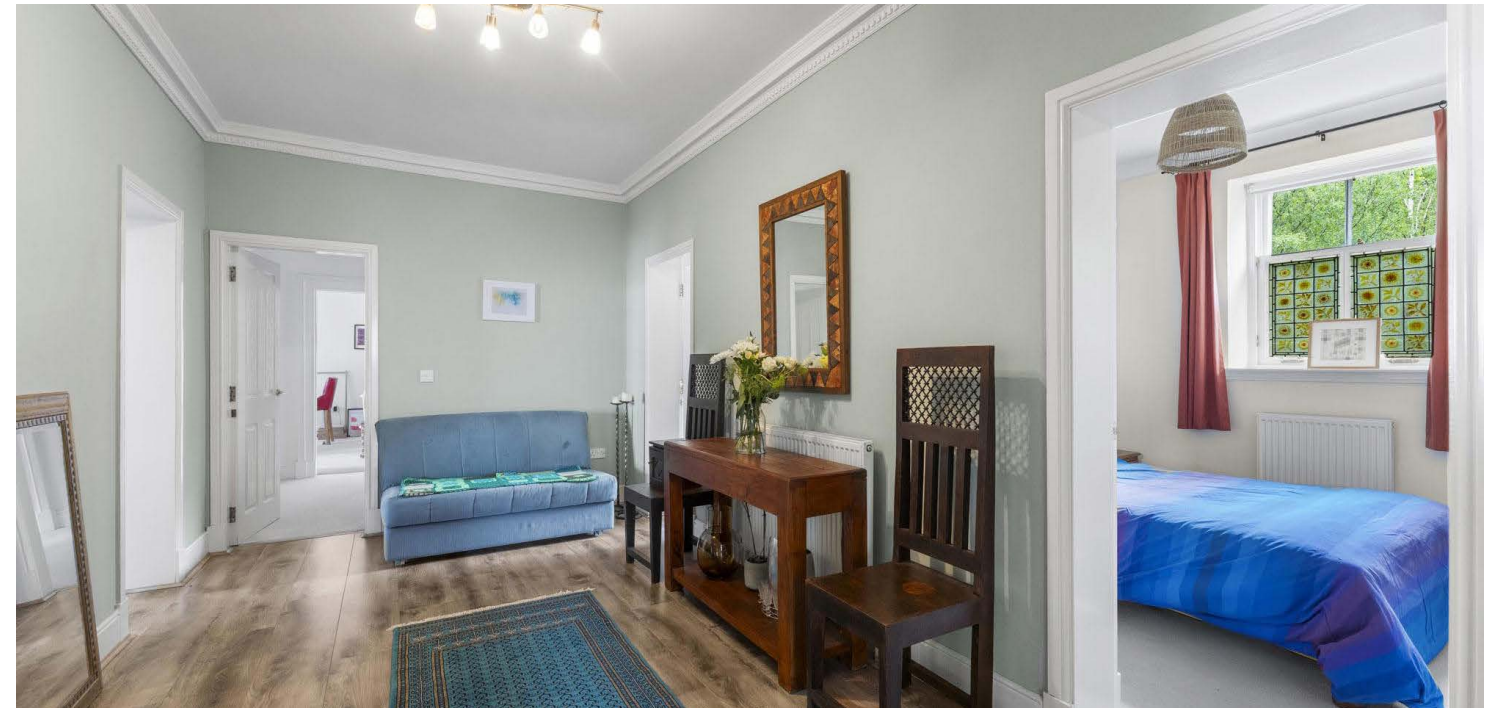




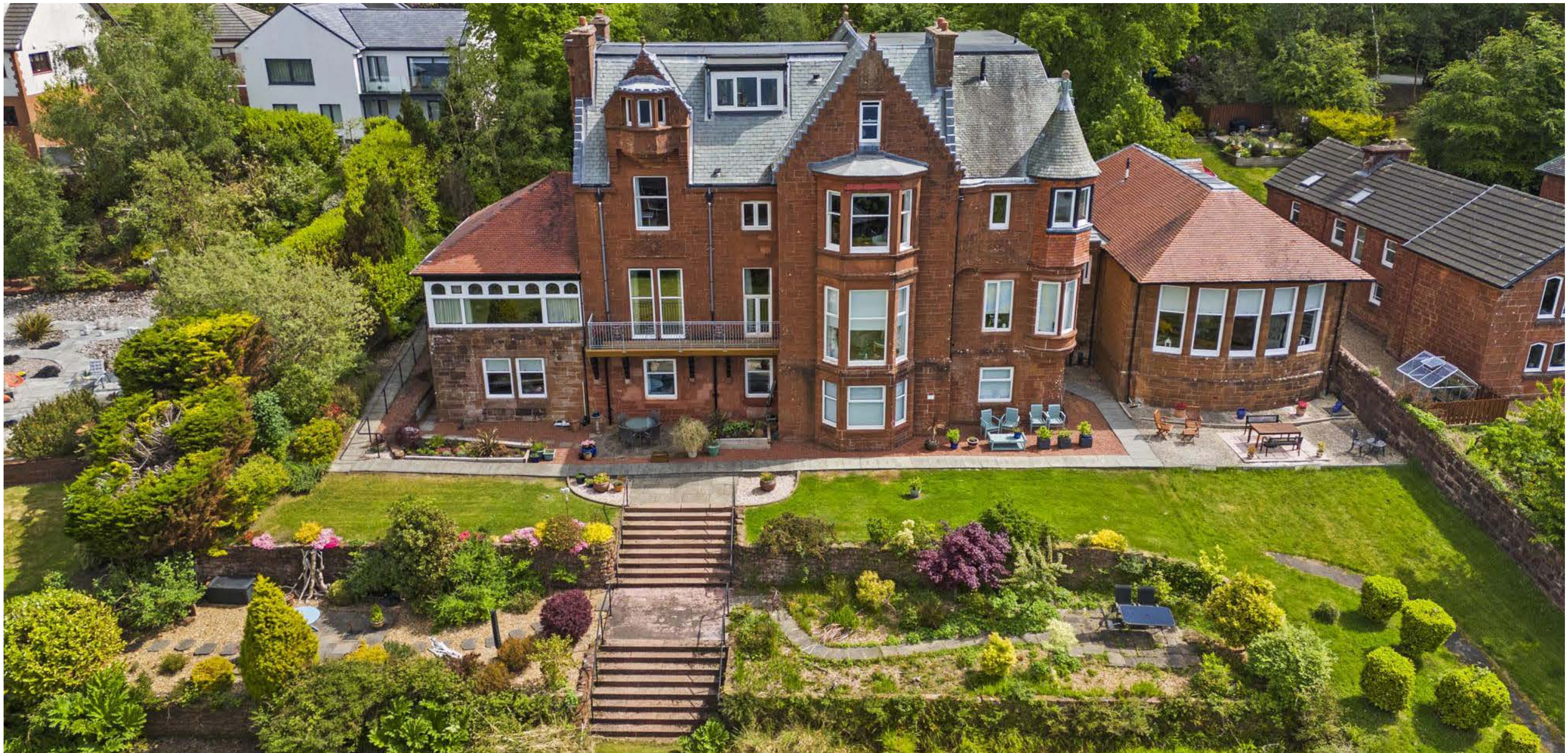
















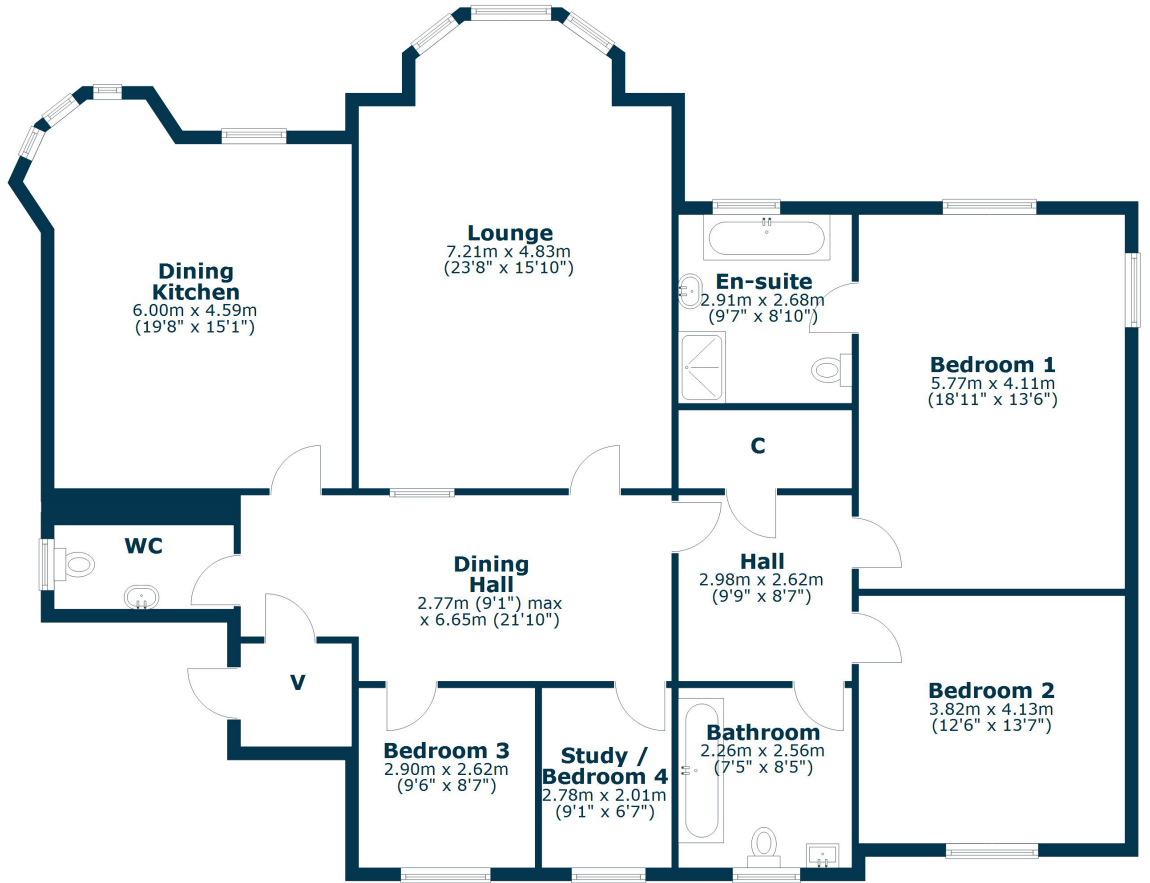












Skelmorlie and neighbouring Wemyss Bay offer a range of amenities, recreational facilities and swift travel links to Glasgow via bus, train and the upgraded road network. There is also a regular ferry service to the Island of Bute. Skelmorlie's amenities include primary schooling, a golf course, a bowling club, as well as restaurants and hotels nearby. 4 miles to the south, the bustling holiday town of Largs has a host of amenities as well as a regular service to the beautiful island of Cumbrae.

**LA2050** | Sat Nav: 14E Eglinton Gardens, Skelmorlie, PA17 5DW

For the full home report visit [www.corumproperty.co.uk](http://www.corumproperty.co.uk)

\* All measurements and distances are approximate Floorplans are for illustration purposes and may not be to scale.





WE'RE **SOLD** ON  
YOUR FUTURE



Corum Largs  
66 Main Street, Largs, KA30 8AL

**Tel:** 01475 675 001

**Email:** [largs@corumproperty.co.uk](mailto:largs@corumproperty.co.uk)

[www.corumproperty.co.uk](http://www.corumproperty.co.uk)