



22 ANNETYARD DRIVE

SKELMORLIE

www.corumproperty.co.uk





5 | BEDROOMS

2 | BATHROOMS

2 | PUBLIC ROOMS

This wonderful extended detached villa is set amidst extensive private garden grounds along with views to the Firth of Clyde and beyond.

22 Annetyard Drive is a great family home with flexible family accommodation set amidst lovely private garden grounds. Skelmorlie is a coastal village with local amenities along with neighbouring Wemyss Bay there can be found rail links and ferry travel to the Isle of Bute.

The flexible family accommodation on offer extends to entrance porch leading through to the welcoming reception hallway, excellent lounge with feature wood-burning stove, formal dining room with views over the rear garden grounds, modern fitted kitchen with dining area. On the upper level there can be found five bedrooms, shower room and family bathroom. Bedrooms one, two and five give fabulous views out over the Firth of Clyde. The property has gas central heating and double glazing. The garden grounds to the front are mainly laid to lawn with the rear gardens offering different areas for socialising, gardening and just relaxing. The driveway provides parking for several vehicles and gives access to the integral garage. Early viewing is highly recommended to appreciate the accommodation and location on offer.

Skelmorlie and neighbouring Wemyss Bay offer a range of amenities, recreational facilities and swift travel links to Glasgow via bus, train and the upgraded road network. There is also a regular ferry service to the Island of Bute. Skelmorlie's amenities include primary schooling, a golf course, a bowling club, as well as restaurants and hotels nearby. 4 miles to the south, the bustling holiday town of Largs has a host of amenities as well as a regular service to the beautiful island of Cumbrae.





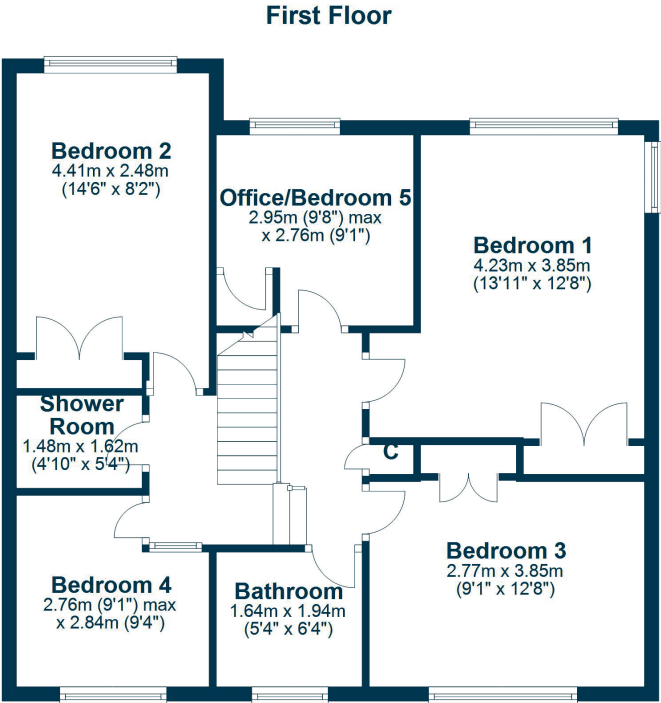
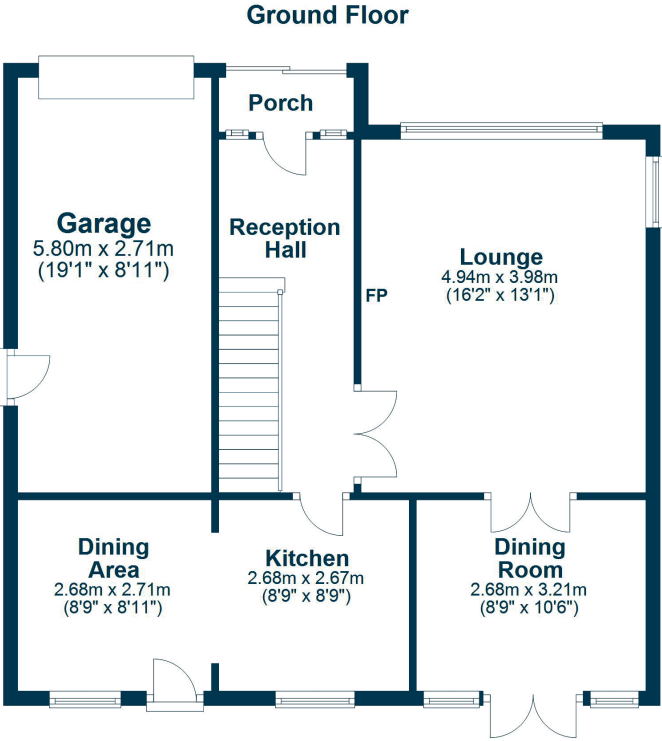












LA1938 | Sat Nav: 22 Annetyard Drive, Skelmorlie, PA17 5BN

For the full home report visit www.corumproperty.co.uk

* All measurements and distances are approximate Floorplans are for illustration purposes and may not be to scale.



WE'RE **SOLD** ON
YOUR FUTURE



Corum Largs
66 Main Street, Largs, KA30 8AL

Tel: 01475 675 001

Email: largs@corumproperty.co.uk

www.corumproperty.co.uk