



22 MONTGOMERIE TERRACE

SKELMORLIE

www.corumproperty.co.uk





4 | BEDROOMS

2 | BATHROOMS

3 | PUBLIC ROOMS

Montgomerie terrace is a popular address in upper Skelmorlie with a nice mix of traditional & modern property. This wonderful modern detached villa provides stunning views out over the Firth of Clyde to the Isle of Bute and Toward lighthouse. A lovely home with excellent and flexible accommodation featuring a conservatory to the rear with beautiful views.

22 Montgomerie Terrace is a wonderful, detached villa which has many offerings including panoramic estuary views to Arran, Bute & Toward, flexible family accommodation, lovely enclosed private garden grounds along with a private driveway and double garage.

The excellent accommodation on offer extends to an entrance porch leading through the bright welcoming reception hallway, wc, the lounge is a great space with a feature fireplace and access through to the conservatory with its exceptional views over the Firth of Clyde, dining room which could easily be utilised as bedroom five if required, beautiful modern fitted kitchen with Siemens fan oven with microwave and grill, warming drawer and also a Fan and Steam oven, along with a good sized dining area with a utility room adjacent to the kitchen.

On the upper level there can be found four bedrooms with the family bathroom and linen cupboard. Three of the bedrooms provide great estuary views and the master bedroom provides a balcony, dressing area and en-suite. The property has gas central heating, double glazing and built in alarm system. The main gardens are set to the rear of the home with great views with access from the conservatory and utility. To fully appreciate the accommodation and location on offer early viewing is highly recommended.





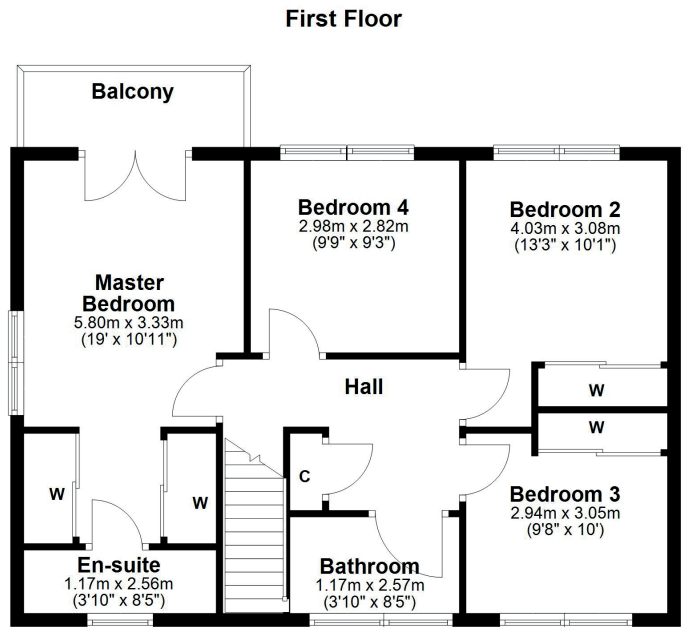
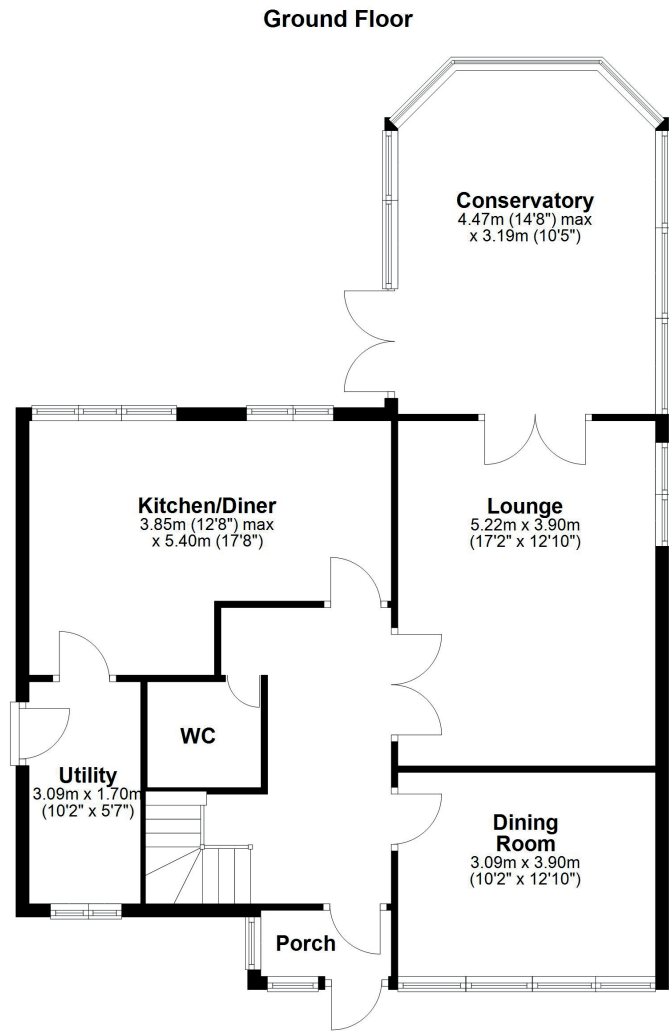












Skelmorlie and neighbouring Wemyss Bay offer a range of amenities, recreational facilities and swift travel links to Glasgow via bus, train and the upgraded road network. There is also a regular ferry service to the Island of Bute. Skelmorlie's amenities include primary schooling, a golf course, a bowling club, as well as restaurants and hotels nearby. 4 miles to the south, the bustling holiday town of Largs has a host of amenities as well as a regular service to the beautiful island of Cumbrae.

LA2041 | Sat Nav: 22 Montgomerie Terrace, Skelmorlie, PA17 5DT

For the full home report visit www.corumproperty.co.uk

* All measurements and distances are approximate Floorplans are for illustration purposes and may not be to scale.



WE'RE **SOLD** ON
YOUR FUTURE



Corum Largs
66 Main Street, Largs, KA30 8AL

Tel: 01475 675 001

Email: largs@corumproperty.co.uk

www.corumproperty.co.uk